

DIXON, ILLINOIS

AL-5285 (FAA)

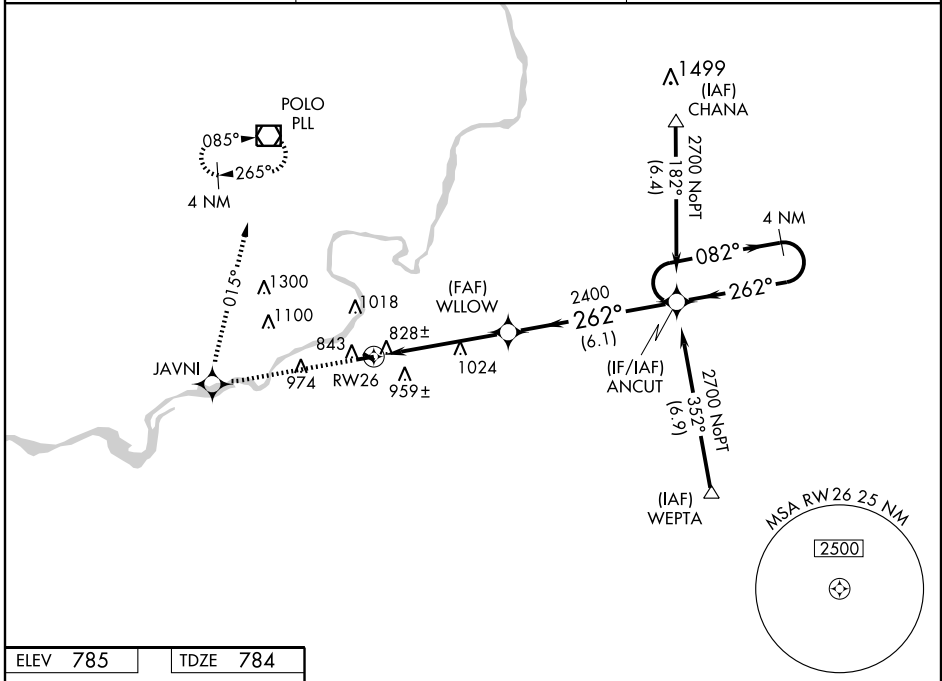
WAAS CH <b>65712</b> <b>W26A</b>	APP CRS <b>262°</b>	Rwy Idg TDZE Apt Elev	<b>3897</b> <b>784</b> <b>785</b>
--	------------------------	-----------------------------	---

# RNAV (GPS) RWY 26

DIXON MUNI-CHARLES R. WALGREEN FIELD (C73)

<p><b>▼</b> Baro-VNAV NA. DME/DME RNP-0.3 NA. Visibility reduction by helicopters NA. Use Rochelle altimeter setting, when not received use Sterling-Rockfalls altimeter setting.</p> <p><b>▲</b> NA</p>	<p>MISSED APPROACH: Climb to 2700 direct JAVNI and right turn via track 015° to PLL VOR/DME and hold.</p>
--	---

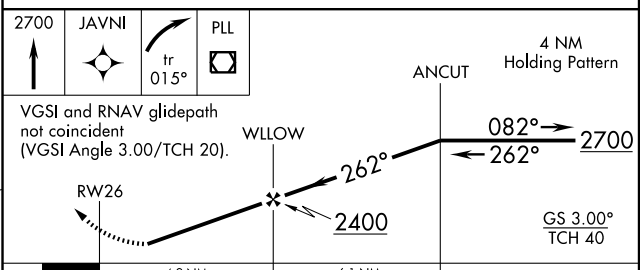
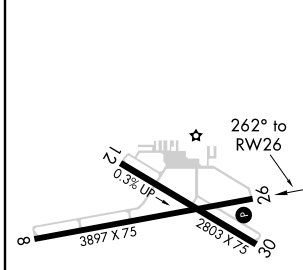
ROCHELLE AWOS-3 <b>118.575</b>	ROCKFORD APP CON <b>126.0 327.0</b>	UNICOM <b>123.05 (CTAF) 0</b>
-----------------------------------	--	----------------------------------



EC-3, 31 MAY 2012 to 28 JUN 2012

EC-3, 31 MAY 2012 to 28 JUN 2012

ELEV 785	TDZE 784
----------	----------



CATEGORY	A	B	C	D
LPV DA	1107-1¼	323 (400-1¼)		NA
LNAV/VNAV DA	1377-2	593 (600-2)		NA
LNAV MDA	1340-1	556 (600-1)	1340-1½ 556 (600-1½)	NA
CIRCLING	1500-1 715 (800-1)	1520-1 735 (800-1)	1520-2 735 (800-2)	NA

DIXON, ILLINOIS  
Orig-A 12152

DIXON MUNI-CHARLES R. WALGREEN FIELD (C73)  
41° 50'N - 89° 27'W  
**RNAV (GPS) RWY 26**

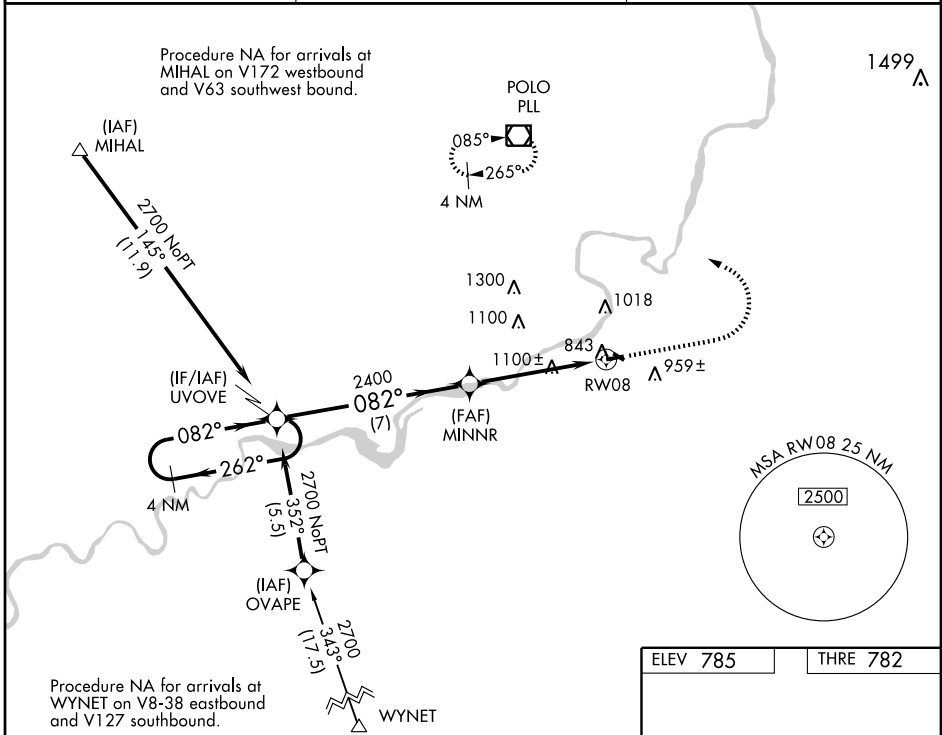
WAAS CH <b>42821</b> <b>W08A</b>	APP CRS <b>082°</b>	Rwy Idg THRE <b>782</b> Apt Elev <b>785</b>	<b>3897</b>
--	------------------------	---	-------------

# RNAV (GPS) RWY 8

DIXON MUNI-CHARLES R. WALGREEN FIELD (C73)

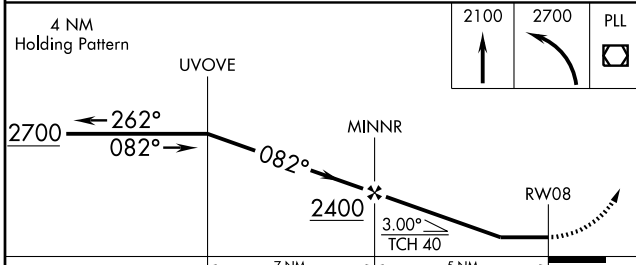
**▼** DME/DME RNP-0.3 NA. Visibility reduction by helicopters NA. Use Rochelle altimeter setting, when not received use Sterling-Rockfalls altimeter setting and increase all MDA 20 feet, increase Cat C Circling visibility 1/4 mile. Procedure NA at night.  
**▲** NA MISSED APPROACH: Climb to 2100 then climbing left turn to 2700 direct PLL VOR/DME and hold.

ROCHELLE AWOS-3 <b>118.575</b>	ROCKFORD APP CON <b>126.0 327.0</b>	UNICOM <b>123.05 (CTAF) 0</b>
-----------------------------------	--	----------------------------------



EC-3, 31 MAY 2012 to 28 JUN 2012

EC-3, 31 MAY 2012 to 28 JUN 2012



ELEV 785	THRE 782
----------	----------

0.3% Up

3897 X 75, 2803 X 75

082° to RWY 08

REIL Rwy 8 0  
MIRL Rwy 8-26 and 12-30 0

CATEGORY	A	B	C	D
LP MDA	1440-1	658 (700-1)	1440-1 7/8 658 (700-1 7/8)	NA
LNAV MDA	1440-1	658 (700-1)	1440-1 7/8 658 (700-1 7/8)	NA
CIRCLING	1500-1 715 (800-1)	1520-1 735 (800-1)	1520-2 735 (800-2)	NA

DIXON, ILLINOIS

AL-5285 (FAA)

VOR-A

DIXON MUNI-CHARLES R. WALGREEN FIELD (C73)

VOR/DME PLL <b>111.2</b> Chan <b>49</b>	APP CRS <b>153°</b>	Rwy Idg TDZE Apt Elev	<b>N/A</b> <b>N/A</b> <b>785</b>
---	------------------------	-----------------------------	--

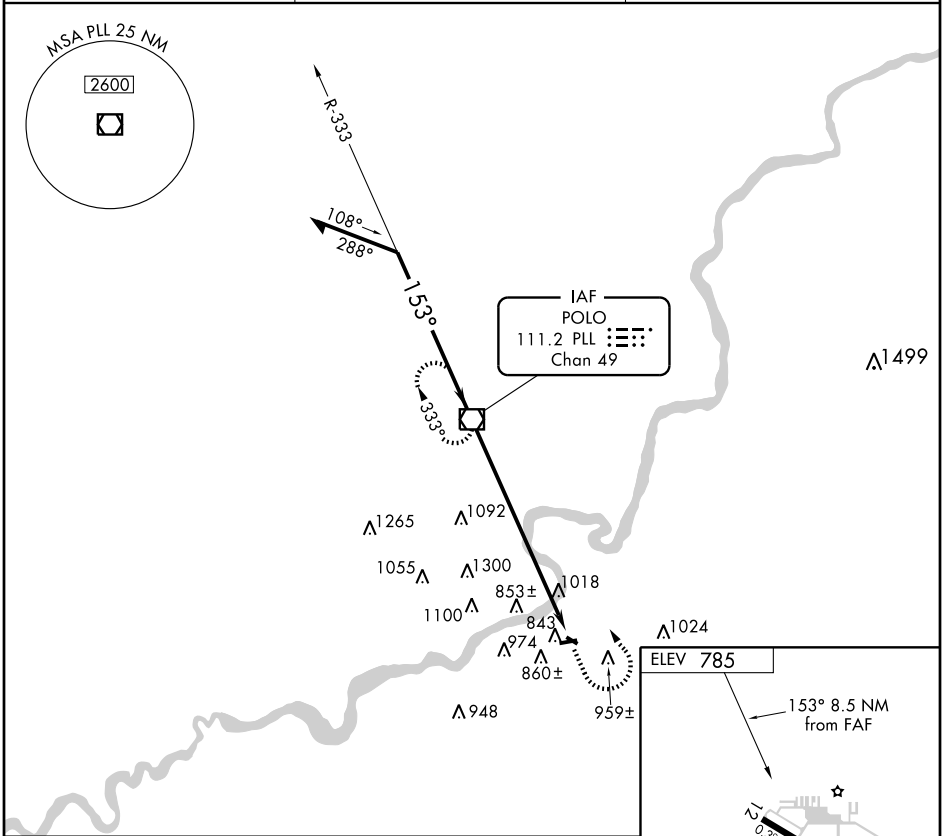
Use Rochelle altimeter setting, when not received use Sterling-Rockfalls altimeter setting.

MISSED APPROACH: Climb to 2000 then climbing left turn to 2600 direct PLL VOR/DME and hold.

ROCHELLE AWOS-3  
**118.575**

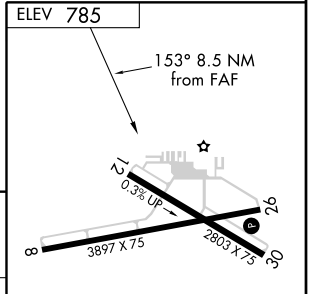
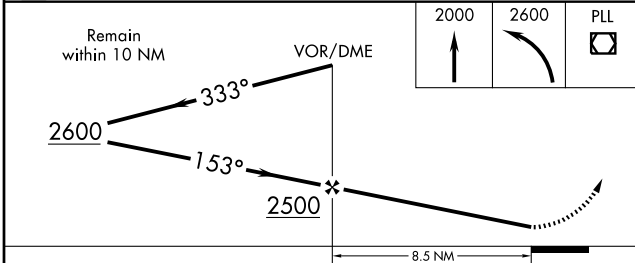
ROCKFORD APP CON  
**126.0 327.0**

UNICOM  
**123.05 (CTAF) 0**



EC-3, 31 MAY 2012 to 28 JUN 2012

EC-3, 31 MAY 2012 to 28 JUN 2012



CATEGORY	A	B	C	D	FAF to MAP 8.5 NM					
CIRCLING	1500-1 715 (800-1)	1520-1 735 (800-1)	NA		Knots	60	90	120	150	180
					Min:Sec	8:30	5:40	4:15	3:24	2:50

DIXON, ILLINOIS  
Amdt 10A 12152

DIXON MUNI-CHARLES R. WALGREEN FIELD (C73)  
41° 50' N - 89° 27' W

VOR-A