

BOGALUSA, LOUISIANA

AL-6397 (FAA)

# RNAV (GPS) RWY 36

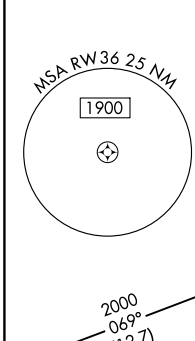
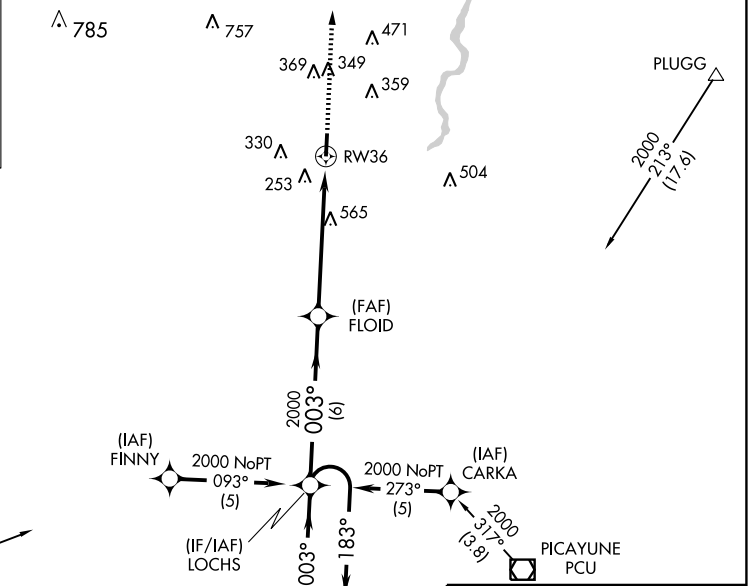
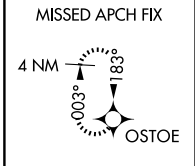
BOGALUSA / GEORGE R. CARR MEMORIAL AIR FIELD (B.X.A)

WAAS CH <b>62913</b> <b>W36A</b>	APP CRS <b>003°</b>	Rwy ldg <b>5002</b>	TDZE <b>117</b>
		Apt Elev <b>119</b>	

**⚠** For uncompensated Baro-VNAV systems, LNAV/VNAV NA below -15°C (5° F) or above 54° C (130° F). DME/DME RNP-0.3 NA. Visibility reduction by helicopters NA.  
**⚠** VDP and Baro-VNAV NA when using Lakefront altimeter setting. When local altimeter setting not received, use Lakefront altimeter setting and increase all DA 124 feet and all MDA 140 feet, increase LPV all Cats visibility ½ mile, increase LNAV and Circling Cat B visibility ¼ mile, increase LNAV and Circling Cat C visibility ½ mile, increase LNAV/VNAV all Cats visibility 1 mile.

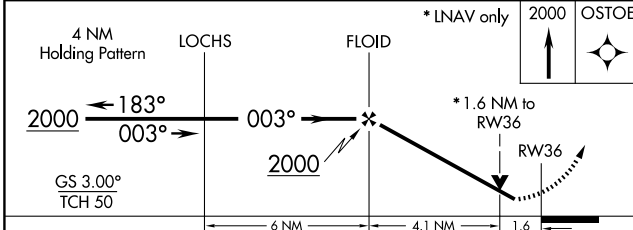
**MISSED APPROACH:**  
Climb to 2000 direct OSTOE and hold.

AWOS-3PT <b>118.025</b>	HOUSTON CENTER <b>126.8 327.8</b>	GCO <b>135.075</b>	UNICOM <b>122.8 (CTAF) ①</b>
----------------------------	--------------------------------------	-----------------------	---------------------------------

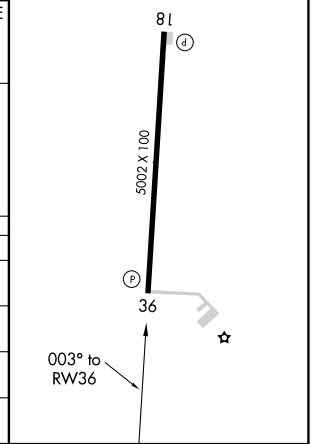


Procedure NA for arrivals at RYTHM via V543 southwest bound.

ELEV 119	TDZE 117
REIL Rwy 18 and 36 ①	
MIRL Rwy 18-36 ①	



CATEGORY	A	B	C	D
LPV DA	470-1¼ 353 (400-1¼)			NA
LNAV/VNAV DA	981-3 864 (900-3)			NA
LNAV MDA	820-1 703 (800-1)		820-2 703 (800-2)	NA
CIRCLING	820-1 701 (800-1)		820-2 701 (800-2)	NA



BOGALUSA, LOUISIANA  
Orig 12152

BOGALUSA / GEORGE R. CARR MEMORIAL AIR FIELD (B.X.A)  
30°49'N-89°52'W

# RNAV (GPS) RWY 36

SC-4, 31 MAY 2012 to 28 JUN 2012

SC-4, 31 MAY 2012 to 28 JUN 2012