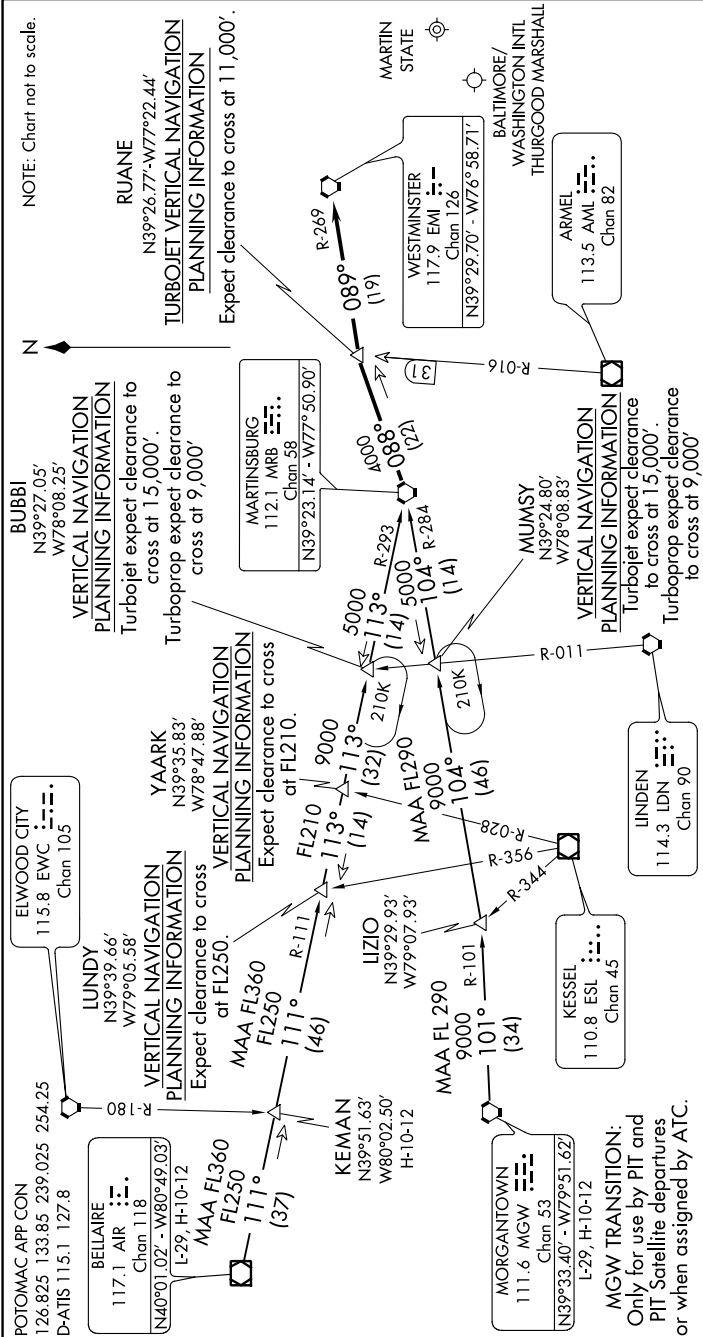


WESTMINSTER FIVE ARRIVAL

BALTIMORE, MARYLAND

NE-3, 17 AUG 2017 to 14 SEP 2017



ARRIVAL ROUTE DESCRIPTION

BELLAIRE TRANSITION (AIR.EMI5): From over AIR VOR/DME via AIR R-111 to LUNDY INT, then via MRB VORTAC R-293 to MRB. Thence . . .

KEMAN TRANSITION (KEMAN.EMI5): From over KEMAN INT via AIR R-111 to LUNDY INT, then via MRB VORTAC R-293 to MRB. Thence . . .

MORGANTOWN TRANSITION (MGW.EMI5): From over MGW VORTAC via the MGW R-101 to LIZIO INT, then via MRB VORTAC R-284 to MRB. Thence . . .

. . . From MRB via MRB R-088 to RUANE INT, then via EMI VORTAC R-269 to EMI. Expect vectors to final approach course after EMI.

NE-3, 17 AUG 2017 to 14 SEP 2017

WESTMINSTER FIVE ARRIVAL

BALTIMORE, MARYLAND