

BALTIMORE, MARYLAND

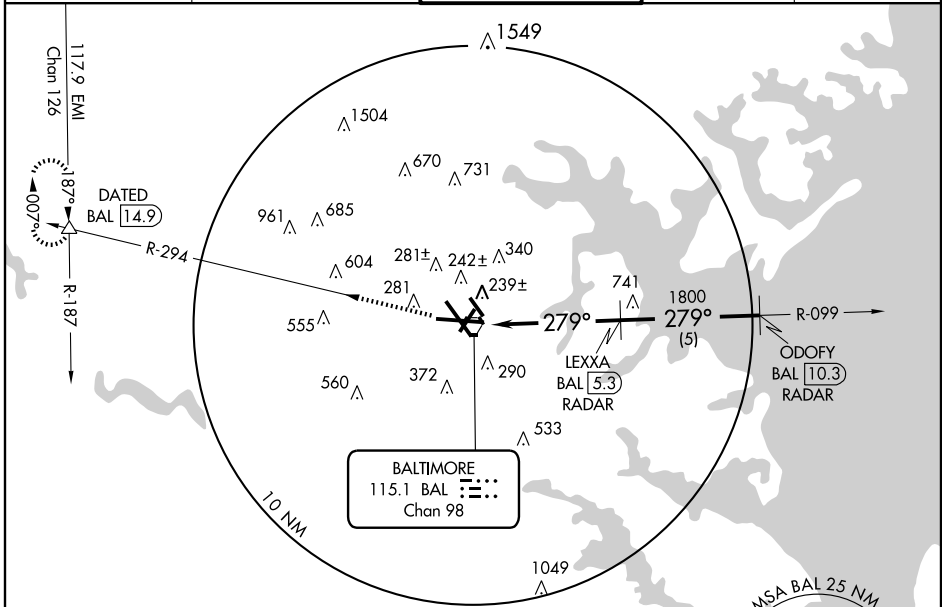
AL-804 (FAA)

VORTAC BAL 115.1 Chan 98	APP CRS 279°	Rwy Idg 10002 TDZE 143 Apt Elev 146
--	------------------------	--

BALTIMORE/
WASHINGTON INTL THURGOOD MARSHALL (BWI) **VOR RWY 28**

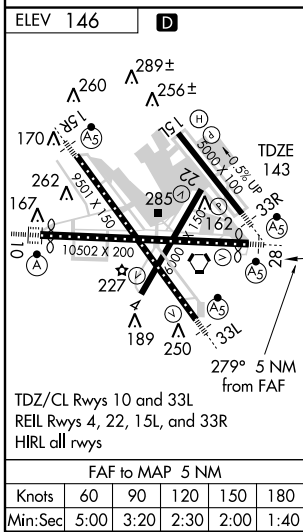
▼ ▲ NA	For inoperative MALSRS increase S-28 Cat D visibility to RVR 6000.	MALSRS 	MISSED APPROACH: Climb to 2500 via BAL R-294 to DATED Int/BAL 14.90 DME and hold.
-------------------------	---	------------	--

ATIS 115.1 127.8	POTOMAC APP CON 119.7 290.475	BALTIMORE TOWER 119.4 257.8	GND CON 121.9	CLNC DEL 118.05
----------------------------	---	---------------------------------------	-------------------------	---------------------------

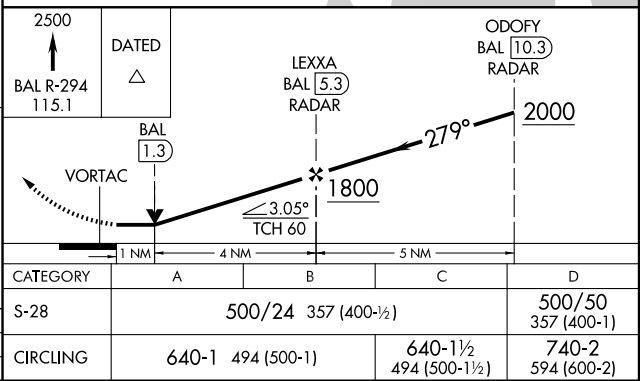


NE-3, 19 NOV 2009 to 17 DEC 2009

NE-3, 19 NOV 2009 to 17 DEC 2009



RADAR REQUIRED



BALTIMORE, MARYLAND
Amdt 24 09295

BALTIMORE/WASHINGTON INTL THURGOOD MARSHALL (BWI)
39°11'N - 76°40'W **VOR RWY 28**