

APP CRS <b>335°</b>	Rwy ldg TDZE Apt Elev	<b>9501</b> <b>142</b> <b>146</b>
------------------------	-----------------------------	---

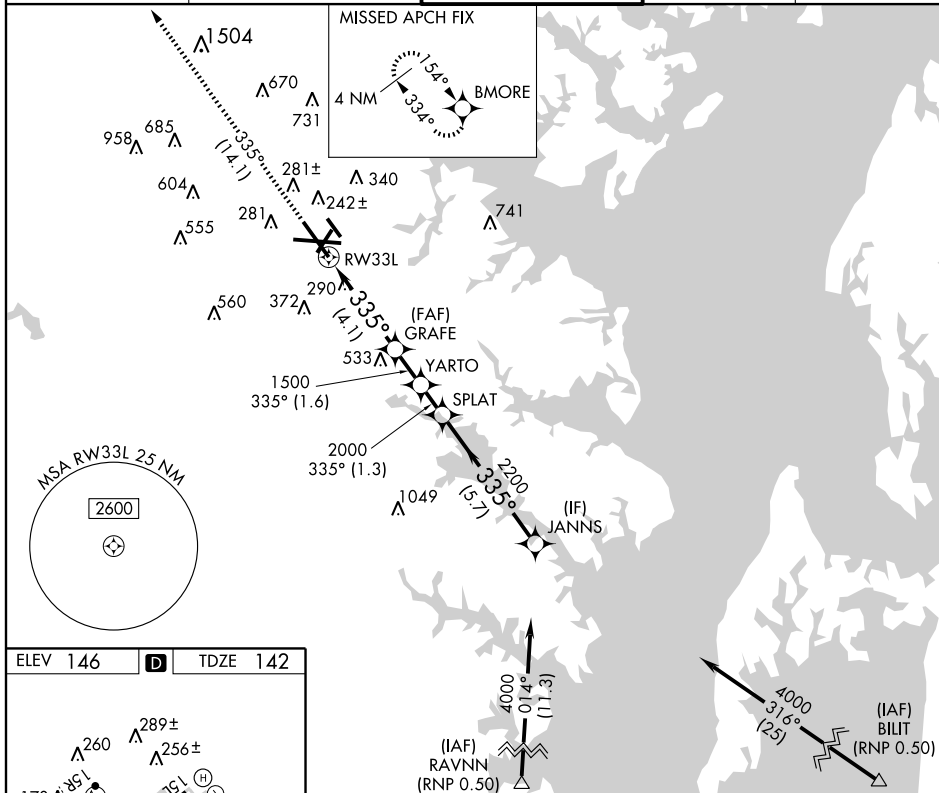
**RNAV (RNP) Z RWY 33L**  
BALTIMORE/WASHINGTON INTL THURGOOD MARSHALL (BWI)

**▼** For inoperative MALSR, increase RNP 0.30 all Cats visibility to RVR 6000.  
For uncompensated Baro-VNAV systems, procedure NA below -13°C (8°F) or above 48°C (118°F). GPS Required.



**MISSED APPROACH:**  
Climb to 2600 on track  
335° to BMORE and hold.

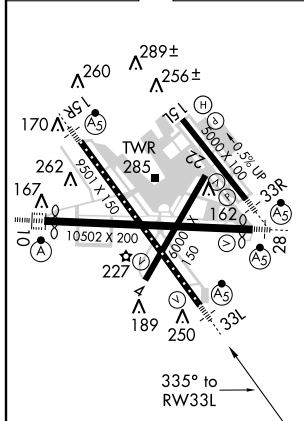
ATIS <b>115.1 127.8</b>	POTOMAC APP CON <b>119.7 290.475</b>	BALTIMORE TOWER <b>119.4 257.8</b>	GND CON <b>121.9</b>	CLNC DEL <b>118.05</b>
----------------------------	---	---------------------------------------	-------------------------	---------------------------



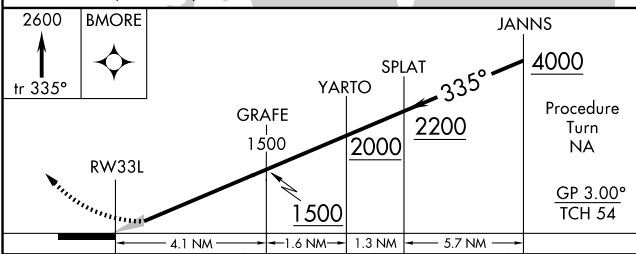
NE-3, 31 MAY 2012 to 28 JUN 2012

NE-3, 31 MAY 2012 to 28 JUN 2012

ELEV 146	<b>D</b>	TDZE 142
----------	----------	----------



TDZ/CL Rwy 10 and 33L  
REIL Rwy 15L and 33R  
HIRL all rwy



CATEGORY	A	B	C	D
RNP 0.30 DA	477/40 335 (400-¾)			

**AUTHORIZATION REQUIRED**