

APP CRS **285°**  
 Rwy ldg **10002**  
 TDZE **142**  
 Apt Elev **146**

# RNAV (RNP) Z RWY 28

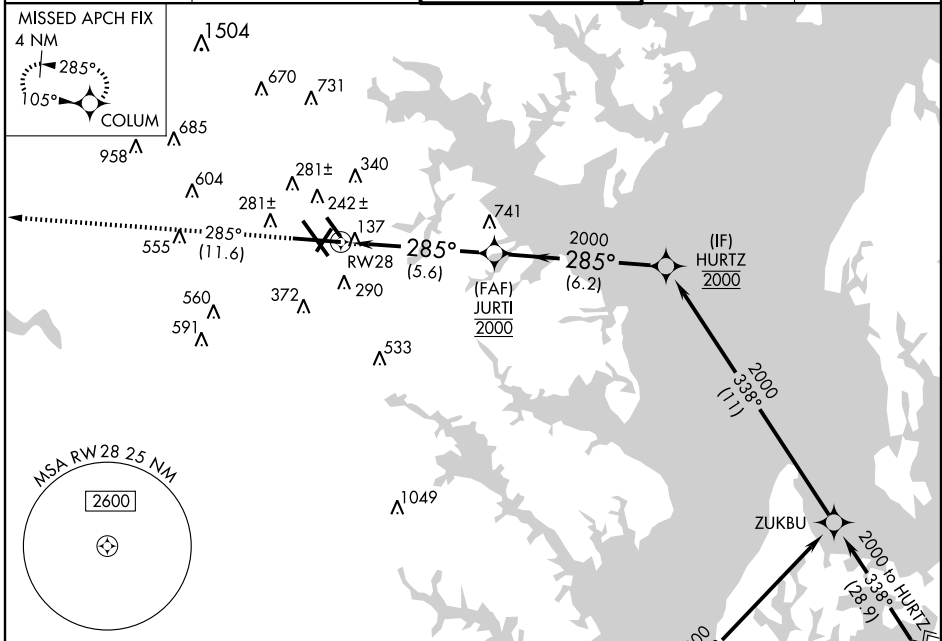
BALTIMORE/WASHINGTON INTL THURGOOD MARSHALL (BWI)

**▼** For inoperative MALSRS, increase RNP 0.30 all Cats visibility to RVR 6000. GPS Required. For uncompensated Baro-VNAV systems, procedure NA below -13°C (9°F) or above 48°C (118°F).



**MISSED APPROACH:** Climb to 2500 via track 285° to COLUM and hold.

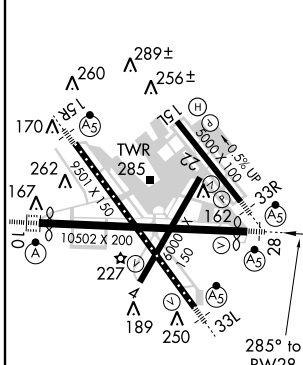
ATIS <b>115.1 127.8</b>	POTOMAC APP CON <b>119.7 290.475</b>	BALTIMORE TOWER <b>119.4 257.8</b>	GND CON <b>121.9</b>	CLNC DEL <b>118.05</b>
----------------------------	---	---------------------------------------	-------------------------	---------------------------



NE-3, 31 MAY 2012 to 28 JUN 2012

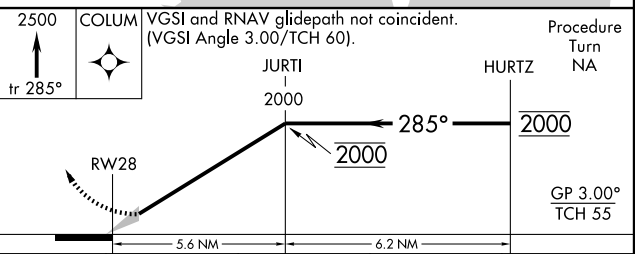
NE-3, 31 MAY 2012 to 28 JUN 2012

ELEV 146 **D** TDZE 142



Procedure NA for arrivals at RAVNN via V379 westbound.

(IAF) RAVNN 6000



CATEGORY	A	B	C	D
RNP 0.30 DA	493/40 351 (400-¾)			

## AUTHORIZATION REQUIRED