

APP CRS **155°**
 Rwy Idg **9501**
 TDZE **139**
 Apt Elev **146**

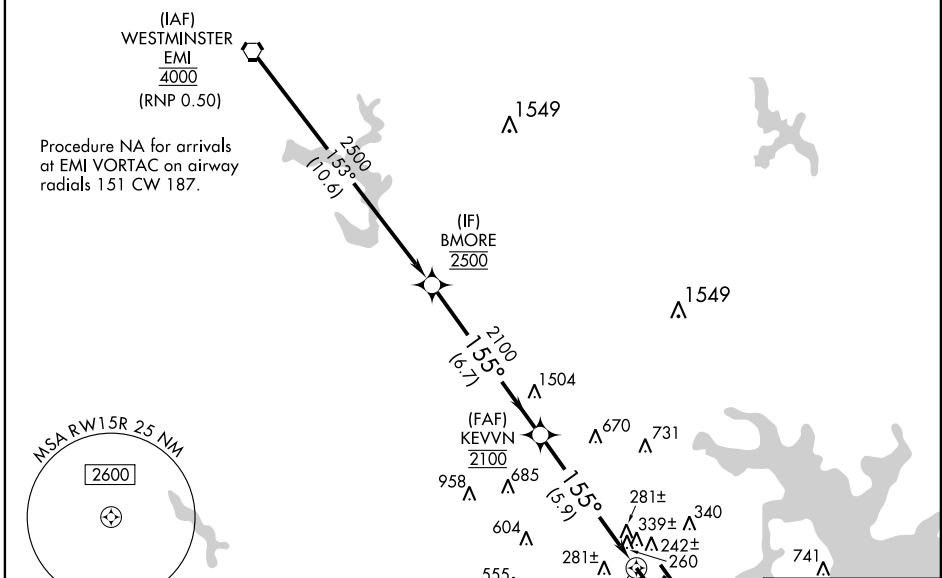
RNAV (RNP) Z RWY 15R
 BALTIMORE/WASHINGTON INTL THURGOOD MARSHALL (BWI)

GPS Required. For uncompensated Baro-VNAV systems, procedure NA below -13°C (9°F) or above 48°C (118°F). Visibility reduction by helicopters NA. For inoperative MALS, increase RNP 0.20 all Cats visibility to 1½, and RNP 0.30 all Cats visibility to 1¾.



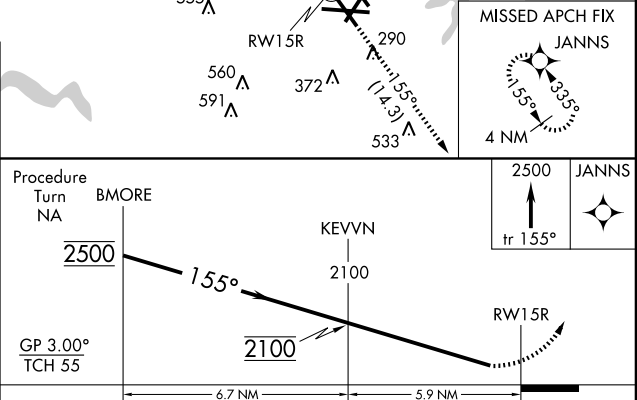
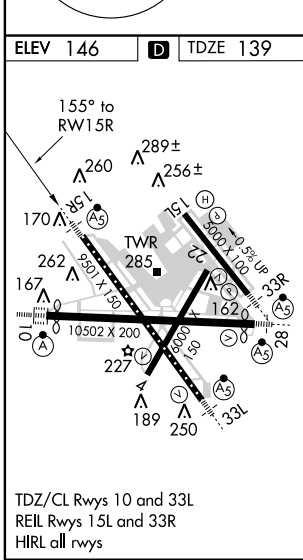
MISSED APPROACH: Climb to 2500 via track 155° to JANNIS and hold.

ATIS 115.1 127.8	POTOMAC APP CON 119.7 290.475	BALTIMORE TOWER 119.4 257.8	GND CON 121.9	CLNC DEL 118.05
----------------------------	---	---------------------------------------	-------------------------	---------------------------



NE-3, 31 MAY 2012 to 28 JUN 2012

NE-3, 31 MAY 2012 to 28 JUN 2012



CATEGORY	A	B	C	D
RNP 0.20 DA	582/50 443 (500-1)			
RNP 0.30 DA	640/60 501 (500-1¼)			

AUTHORIZATION REQUIRED