

APP CRS	Rwy Idg	9952
105°	TDZE	143
	Apt Elev	146

RNAV (RNP) Z RWY 10

BALTIMORE/WASHINGTON INTL THURGOOD MARSHALL (BWI)

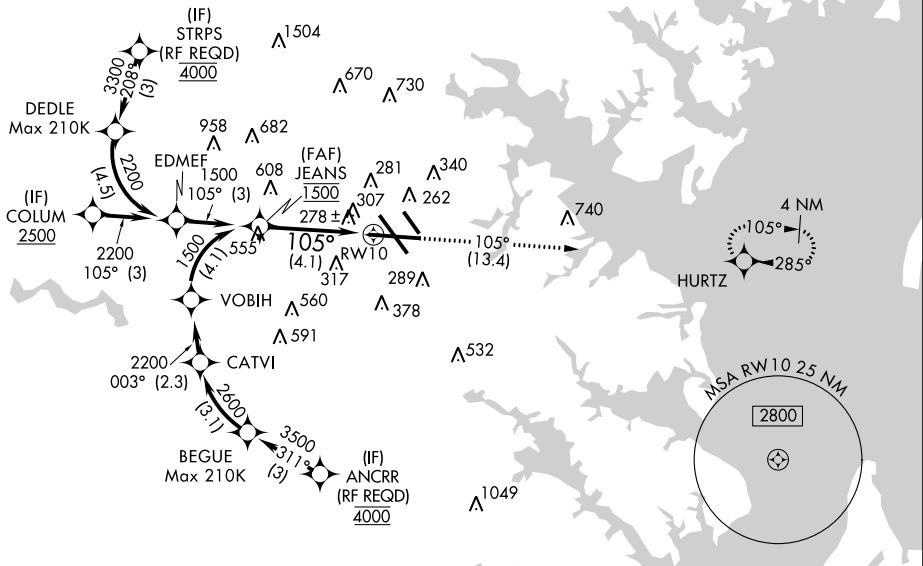
<p>▼ For uncompensated Baro-VNAV systems, procedure NA below -15°C (5°F) or above 54°C (130°F). For inop ALSF-2, increase RNP 0.11 all Cats visibility to 1, increase RNP 0.30 all Cats visibility to 1½. GPS required.</p>	ALSF-2	<p>MISSED APPROACH: Climb to 2500 on track 105° to HURTZ and hold.</p>

ATIS	POTOMAC APP CON	BALTIMORE TOWER	GND CON	CLNC DEL
115.1 127.8	(020°-100°) 119.7 290.475 (131°-180°) (101°-130°) 128.7 307.9 (181°-019°)	119.4 257.8	121.9	118.05

RADAR REQUIRED

△1549

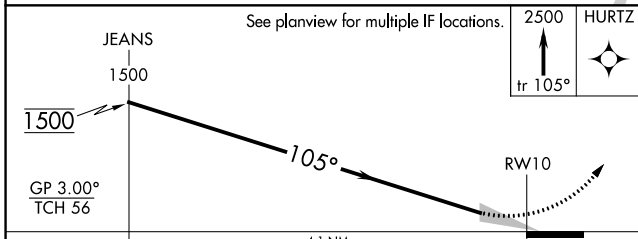
CPDLC



NE-3, 27 APR 2017 to 25 MAY 2017

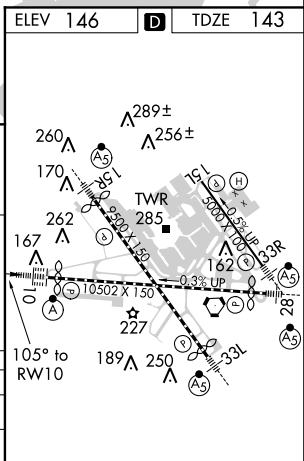
NE-3, 27 APR 2017 to 25 MAY 2017

ELEV 146	D	TDZE 143
----------	----------	----------



CATEGORY	A	B	C	D
RNP 0.11 DA		448/24	305 (300-½)	
RNP 0.30 DA		626/60	483 (500-1¼)	

AUTHORIZATION REQUIRED



TDZ/CL Rws 10 and 33L
REIL Rws 15L and 33R
HIRL all Rws

RNAV (RNP) Z RWY 10