

WAAS CH 82207 W33A	APP CRS 335°	Rwy Idg TDZE 142 Apt Elev 146	9501
--	------------------------	---	-------------

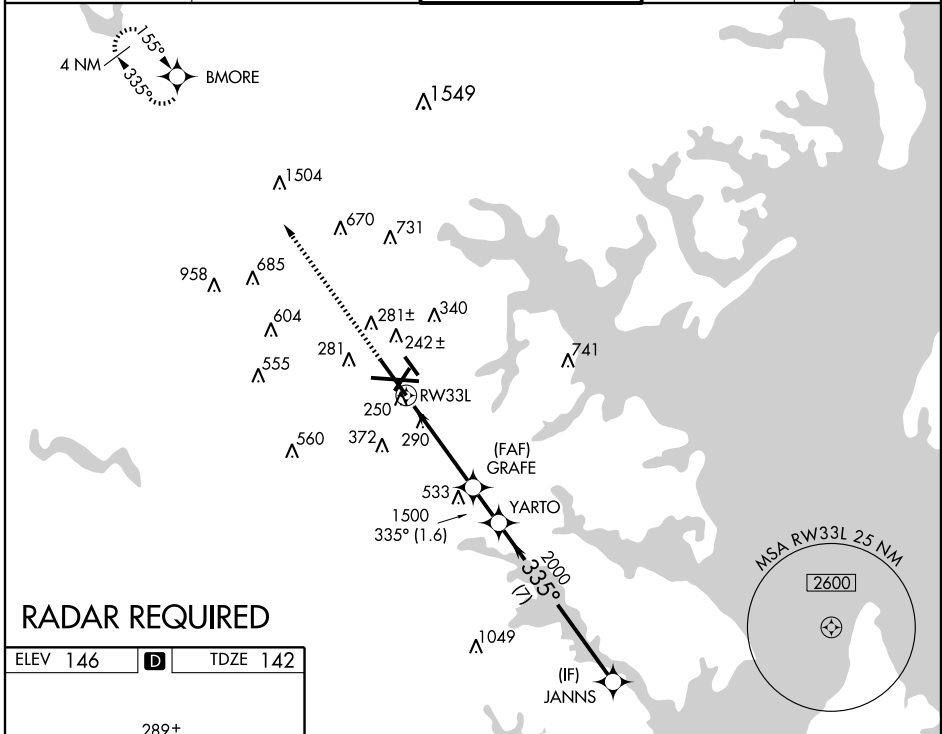
RNAV (GPS) Y RWY 33L
BALTIMORE/ WASHINGTON INTL THURGOOD MARSHALL (BWI)

▼ For inoperative MALSR, increase LNAV Cat. D visibility to RVR 6000.
For uncompensated Baro-VNAV systems, LNAV/VNAV
NA below -15°C (5°F) or above 48°C (118°F). DME/DME RNP-0.3 NA.



MISSED APPROACH: Climb to 3000
direct BMORE and hold.

ATIS 115.1 127.8	POTOMAC APP CON 119.7 290.475	BALTIMORE TOWER 119.4 257.8	GND CON 121.9	CLNC DEL 118.05
----------------------------	---	---------------------------------------	-------------------------	---------------------------

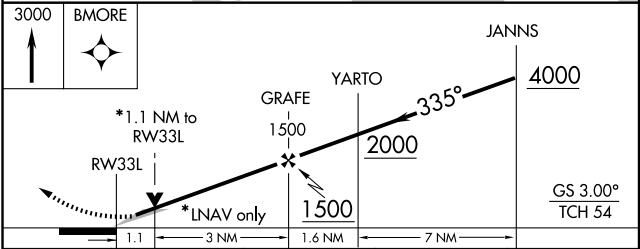
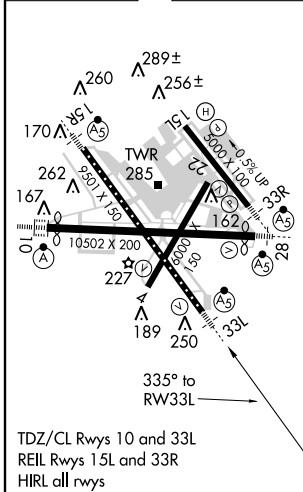


NE-3, 31 MAY 2012 to 28 JUN 2012

NE-3, 31 MAY 2012 to 28 JUN 2012

RADAR REQUIRED

ELEV 146	D	TDZE 142
----------	----------	----------



CATEGORY	A	B	C	D
LPV DA	342/24 200 (200-1/2)			
LNAV/VNAV DA	510/40 368 (400-3/4)			
LNAV MDA	540/24 398 (400-1/2)			540/50 398 (400-1)
CIRCLING	640-1 494 (500-1)		640-1 1/2 494 (500-1 1/2)	
			740-2 594 (600-2)	