


WAAS CH 48808 W28A	APP CRS 285°	Rwy Idg TDZE Apt Elev	9802 143 143
----------------------------------------	------------------------	-----------------------------	-----------------------------------------

BALTIMORE/
WASHINGTON INTL THURGOOD MARSHALL (BWI)

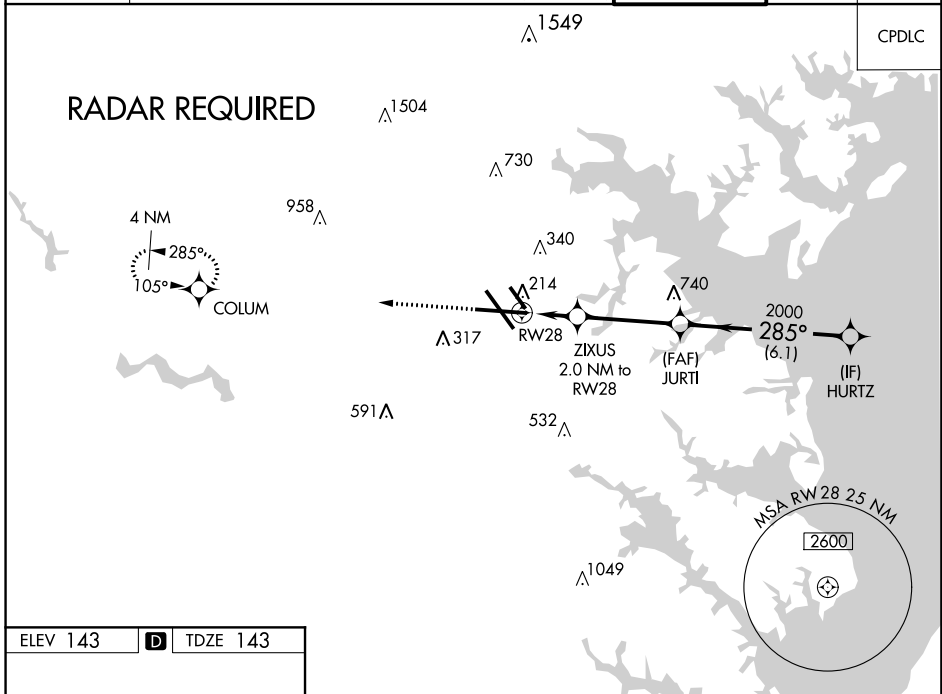
RNAV (GPS) Y RWY 28

⚠ For uncompensated Baro-VNAV systems, LNAV/VNAV NA below -12°C (11°F) or above 54°C (130°F). DME/DME RNP-0.3 NA.
⚠ For inoperative MALSR, increase LNAV/VNAV all Cats visibility to RVR 4500.
 *RVR 1800 authorized with use of FD or AP or HUD to DA.

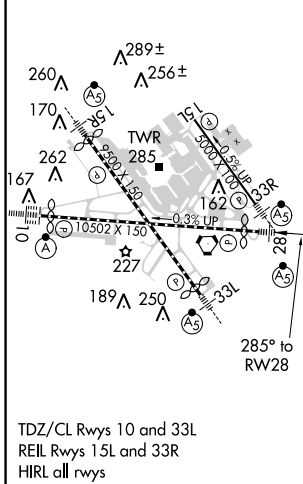
MALSR 

MISSED APPROACH:
Climb to 2500 direct COLUM and hold.

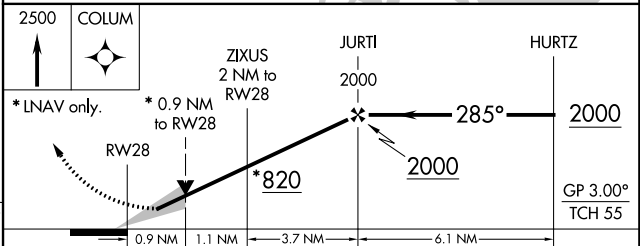
D-ATIS 115.1 127.8	POTOMAC APP CON 119.0 282.275 124.55 317.425	(020°-100°) 119.7 290.475 (101°-130°) 128.7 307.9	(131°-180°) (181°-019°)	BALTIMORE TOWER 119.4 257.8	GND CON 121.9	CLNC DEL 118.05
------------------------------	------------------------------------------------------------------	--------------------------------------------------------------------	----------------------------	---------------------------------------	-------------------------	---------------------------



ELEV 143	D	TDZE 143
----------	----------	----------



TDZ/CL Rwy 10 and 33L
REIL Rwy 15L and 33R
HIRL all rwy



CATEGORY	A	B	C	D
LPV DA		**343/24	200 (200-½)	
LNAV/VNAV DA		393/24	250 (300-½)	
LNAV DA	480/24	337 (400-½)	480/26	337 (400-⅝)
C CIRCLING	640-1 497 (500-1)	660-1 517 (600-1)	700-1½ 557 (600-1½)	860-2¼ 717 (800-2¼)

NE-3, 12 OCT 2017 to 09 NOV 2017

NE-3, 12 OCT 2017 to 09 NOV 2017