

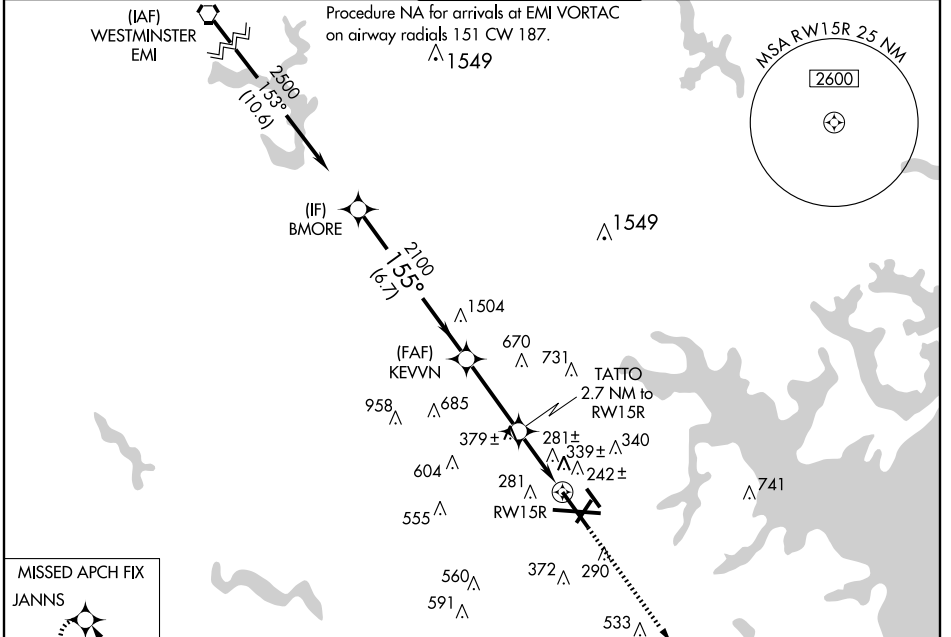
RNAV (GPS) Y RWY 15R

BALTIMORE/WASHINGTON INTL THURGOOD MARSHALL (BWI)

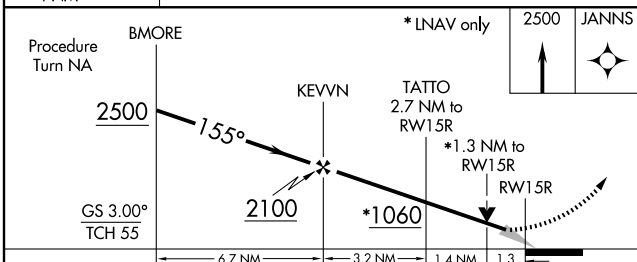
WAAS CH 66007 W15B	APP CRS 155°	Rwy Idg TDZE 139 Apt Elev 146	9501
--	------------------------	---	-------------

<p>For uncompensated Baro-VNAV systems, LNAV/VNAV NA below -15°C (5°F) or above 48°C (118°F). DME/DME RNP-0.3 NA.</p>	<p>MALSR</p>	<p>MISSED APPROACH: Climb to 2500 direct JANNIS and hold.</p>

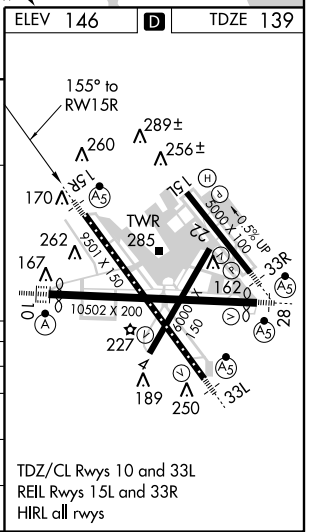
ATIS 115.1 127.8	POTOMAC APP CON 119.7 290.475	BALTIMORE TOWER 119.4 257.8	GND CON 121.9	CLNC DEL 118.05
----------------------------	---	---------------------------------------	-------------------------	---------------------------



MISSED APCH FIX JANNIS



CATEGORY	A	B	C	D
LPV DA		339/24	200 (200-1/2)	
LNAV/VNAV DA		659/60	520 (600-1 1/4)	
LNAV MDA	600/24	461 (500-1/2)	600/40 461 (500-3/4)	600/50 461 (500-1)
CIRCLING	640-1	494 (500-1)	640-1 1/2 494 (500-1 1/2)	740-2 594 (600-2)



NE-3, 31 MAY 2012 to 28 JUN 2012

NE-3, 31 MAY 2012 to 28 JUN 2012

RNAV (GPS) Y RWY 15R