

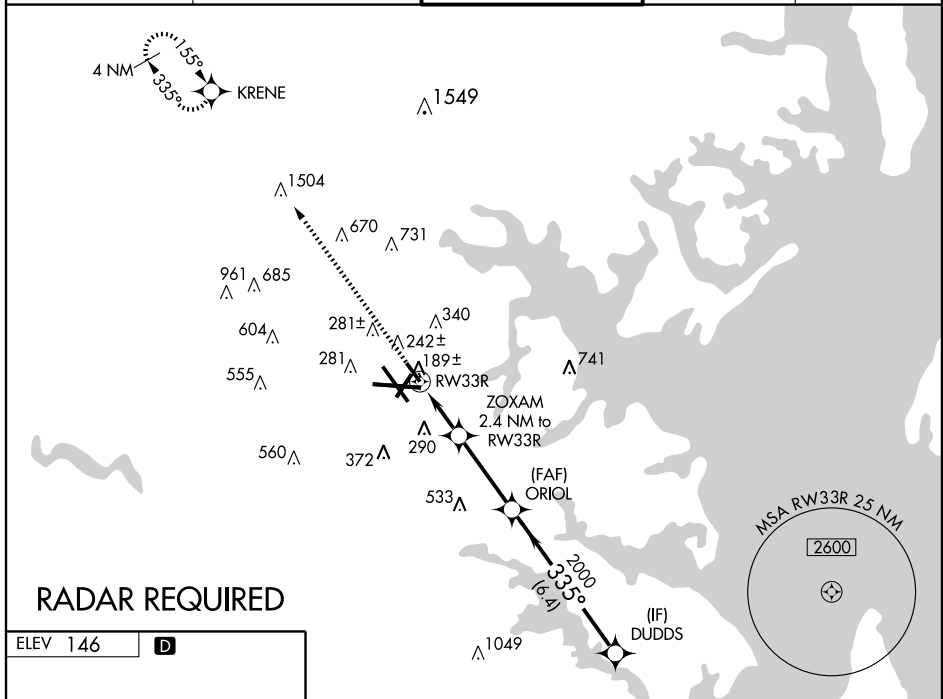
WAAS CH <b>69208</b> <b>W33B</b>	APP CRS <b>335°</b>	Rwy ldg <b>5000</b> TDZE <b>124</b> Apt Elev <b>146</b>
--	------------------------	---

BALTIMORE/ WASHINGTON INTL THURGOOD MARSHALL (BWI)  
**RNAV (GPS) RWY 33R**

▼ For inoperative MALS, increase LPV visibility to RVR 5000 all Cats.  
For uncompensated Baro-VNAV systems, LNAV/ VNAV NA below -15°C (5°F)  
or above 48°C (118°F).  
DME/DME RNP -0.3 NA.

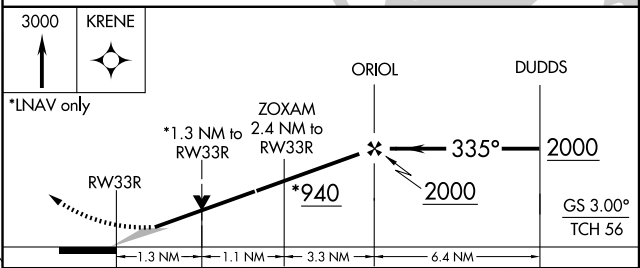
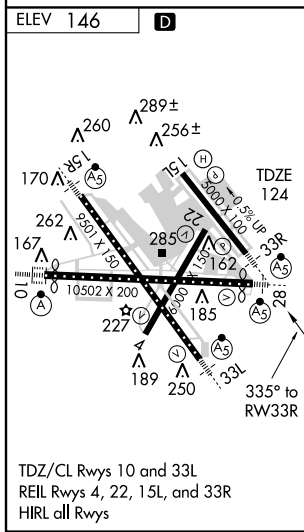
MALS R  
MISSED APPROACH: Climb to 3000  
direct KRENE and hold.

ATIS <b>115.1 127.8</b>	POTOMAC APP CON <b>119.7 290.475</b>	BALTIMORE TOWER <b>119.4 257.8</b>	GND CON <b>121.9</b>	CLNC DEL <b>118.05</b>
----------------------------	---	---------------------------------------	-------------------------	---------------------------



NE-3, 19 NOV 2009 to 17 DEC 2009

NE-3, 19 NOV 2009 to 17 DEC 2009



CATEGORY	A	B	C	D
LPV DA		392/24	268 (300-1/2)	
LNAV/VNAV DA		518/50	394 (400-1)	
LNAV MDA	580/24	456 (500-1/2)	580/40 456 (500-3/4)	580/50 456 (500-1)
CIRCLING	640-1	494 (500-1)	640-1 1/2 494 (500-1 1/2)	740-2 594 (600-2)