

WAAS CH <b>40108</b> <b>W15A</b>	APP CRS <b>155°</b>	Rwy Idg TDZE Apt Elev	<b>5000</b> <b>142</b> <b>146</b>
--	------------------------	-----------------------------	---

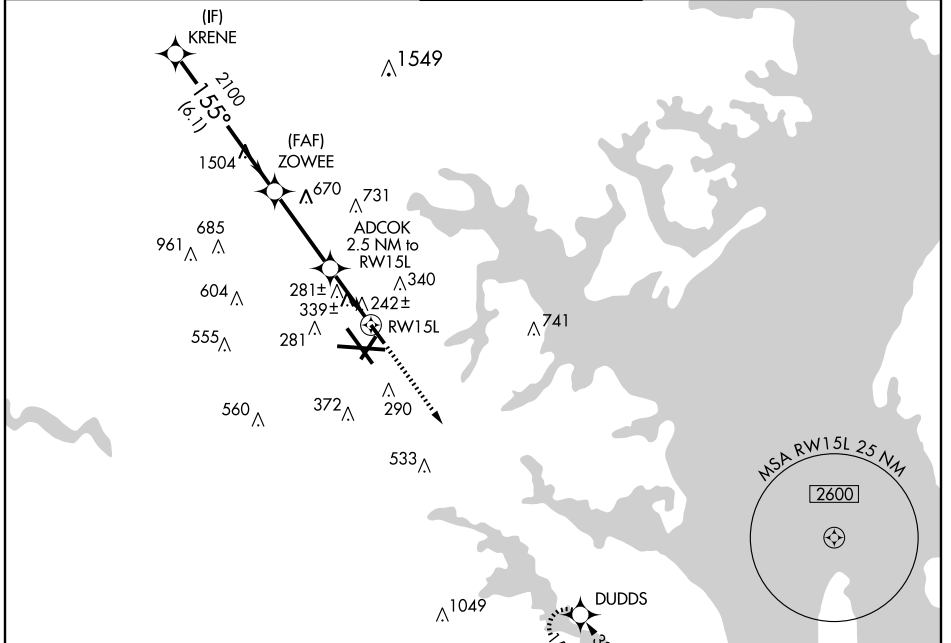
BALTIMORE/  
WASHINGTON INTL THURGOOD MARSHALL (BWI)

**RNAV (GPS) RWY 15L**

For uncompensated Baro-VNAV systems, LNAV/VNAV NA below -15°C (5°F) or above 48°C (118°F).  
DME/DME RNP -0.3 NA. Visibility reduction by helicopters NA.

MISSED APPROACH: Climb to 2500  
direct DUDDS and hold.

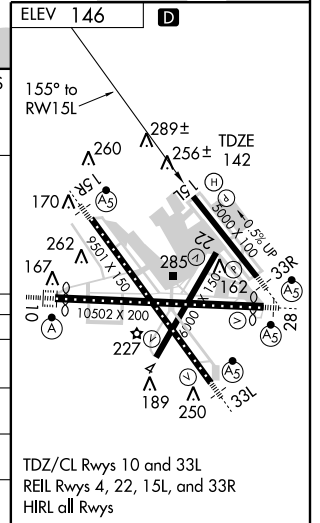
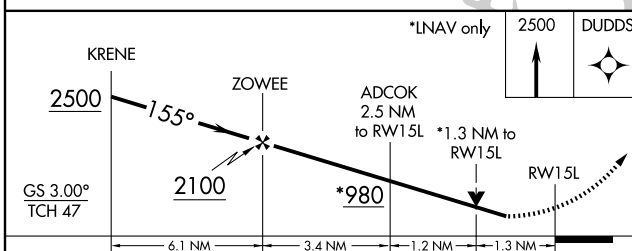
ATIS <b>115.1 127.8</b>	POTOMAC APP CON <b>119.7 290.475</b>	BALTIMORE TOWER <b>119.4 257.8</b>	GND CON <b>121.9</b>	CLNC DEL <b>118.05</b>
----------------------------	---	---------------------------------------	-------------------------	---------------------------



NE-3, 19 NOV 2009 to 17 DEC 2009

NE-3, 19 NOV 2009 to 17 DEC 2009

**RADAR REQUIRED**



CATEGORY	A	B	C	D
LPV DA		519/60	377 (400-1¼)	
LNAV/VNAV DA		659-1¾	517 (600-1¾)	
LNAV MDA	600/50	458 (500-1)	600/60 458 (500-1¼)	600-1½ 458 (500-1½)
CIRCLING	640-1	494 (500-1)	640-1½ 494 (500-1½)	740-2 594 (600-2)

TDZ/CL Rwy 10 and 33L  
REIL Rwy 4, 22, 15L, and 33R  
HIRL all Rwy

**RNAV (GPS) RWY 15L**