

Amdt 1 05300

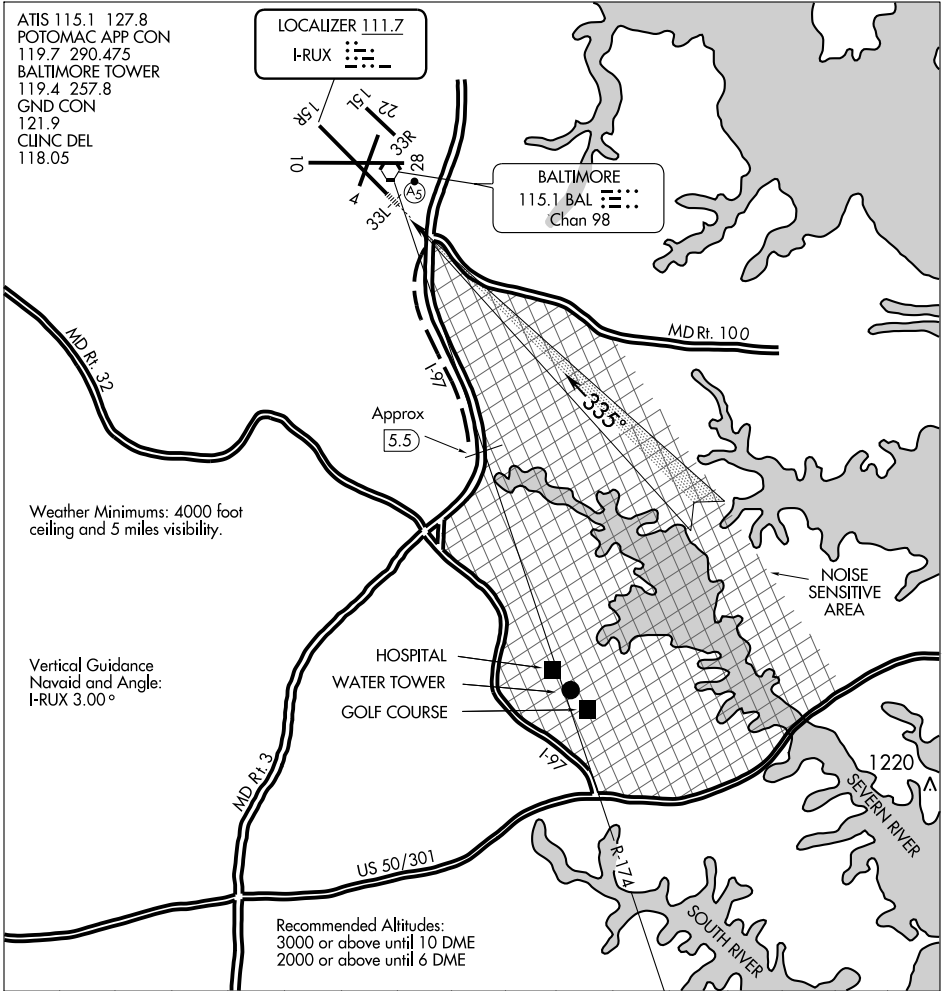
BALTIMORE/
WASHINGTON INTL THURGOOD MARSHALL (BWI)
AL-804 (FAA)
BALTIMORE, MARYLAND

INTERSTATE VISUAL RWY 33L

ATIS 115.1 127.8
POTOMAC APP CON
119.7 290.475
BALTIMORE TOWER
119.4 257.8
GND CON
121.9
CLINC DEL
118.05

LOCALIZER 111.7
I-RUX

BALTIMORE
115.1 BAL
Chan 98



Weather Minimums: 4000 foot ceiling and 5 miles visibility.

Vertical Guidance
Navaid and Angle:
I-RUX 3.00°

Recommended Altitudes:
3000 or above until 10 DME
2000 or above until 6 DME

1	2	3	4	5	6	7	8	9	10	11	12	13	14	15	16
---	---	---	---	---	---	---	---	---	----	----	----	----	----	----	----

INTERSTATE VISUAL RWY 33L

Radar vectors will be provided to the BAL 174 RADIAL. When cleared for the Interstate Visual Runway 33L Approach, aircraft will proceed via the BAL 174 radial until over I-97 (Approx. 5.5 DME). Then via I-97 to join Runway 33L final approach course. Runway 33L ILS with MALSRS will be on and available for use. Noise sensitive area east of I-97. This procedure applicable to turbo-jets arriving via OTT VORTAC.

INTERSTATE VISUAL RWY 33L

Amdt 1 05300

BALTIMORE/ 39°11'N-76°40'W
WASHINGTON INTL THURGOOD MARSHALL (BWI)
BALTIMORE, MARYLAND

NE-3, 19 NOV 2009 to 17 DEC 2009

NE-3, 19 NOV 2009 to 17 DEC 2009