

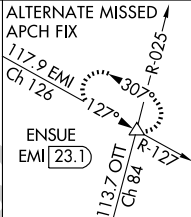
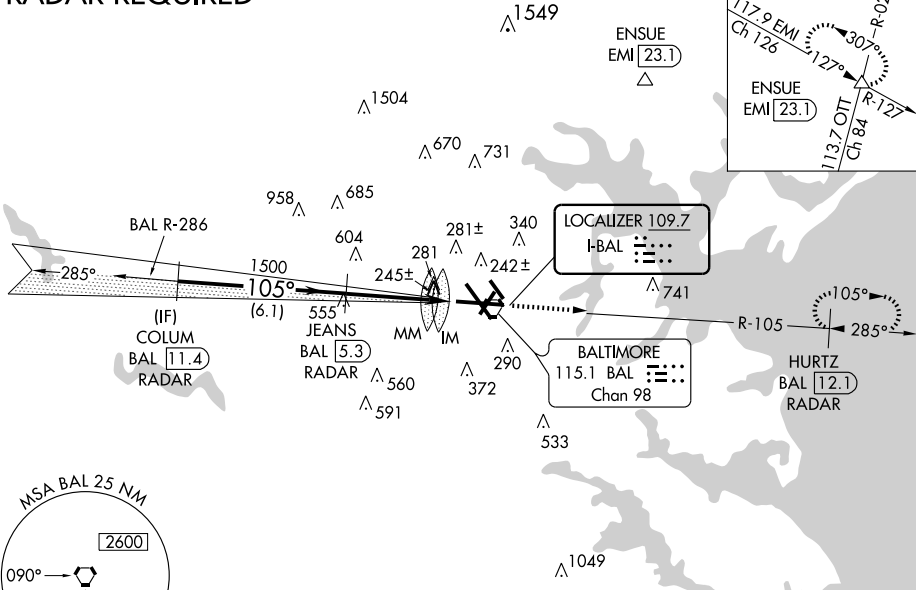
LOC I-BAL 109.7	APP CRS 105°	Rwy Idg 9952 TDZE 143 Apt Elev 146
---------------------------	------------------------	---

BALTIMORE/
WASHINGTON INTL THURGOOD MARSHALL (BWI) **ILS RWY 10 (CAT III)**

DME Required.		ALSF-2 	MISSED APPROACH: Climb to 2500 on BAL R-105 to HURTZ/BAL 12.1 DME/RADAR and hold.	
---------------	--	------------	---	--

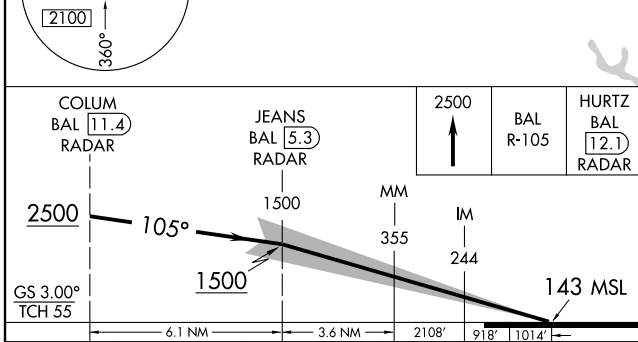
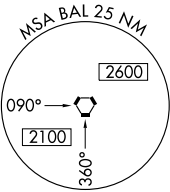
ATIS 115.1 127.8	POTOMAC APP CON 119.7 290.475	BALTIMORE TOWER 119.4 257.8	GND CON 121.9	CLNC DEL 118.05
----------------------------	---	---------------------------------------	-------------------------	---------------------------

RADAR REQUIRED

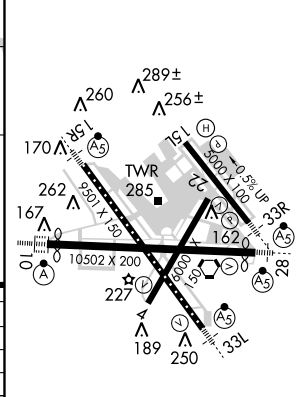


NE-3, 31 MAY 2012 to 28 JUN 2012

NE-3, 31 MAY 2012 to 28 JUN 2012



ELEV 146	D	TDZE 143
----------	----------	----------



CATEGORY	A	B	C	D
S-ILS 10		CAT IIIa	RVR 07	
S-ILS 10		CAT IIIb	RVR 06	
S-ILS 10		CAT IIIc	NA	

CATEGORY III ILS - SPECIAL AIRCREW & AIRCRAFT CERTIFICATION REQUIRED

TDZ/CL Rwy 10 and 33L
REIL Rwy 15L and 33R
HIRL all rwy's