

LOC I-BAL 109.7	APP CRS 105°	Rwy Idg 9952 TDZE 143 Apt Elev 146
---------------------------	------------------------	---

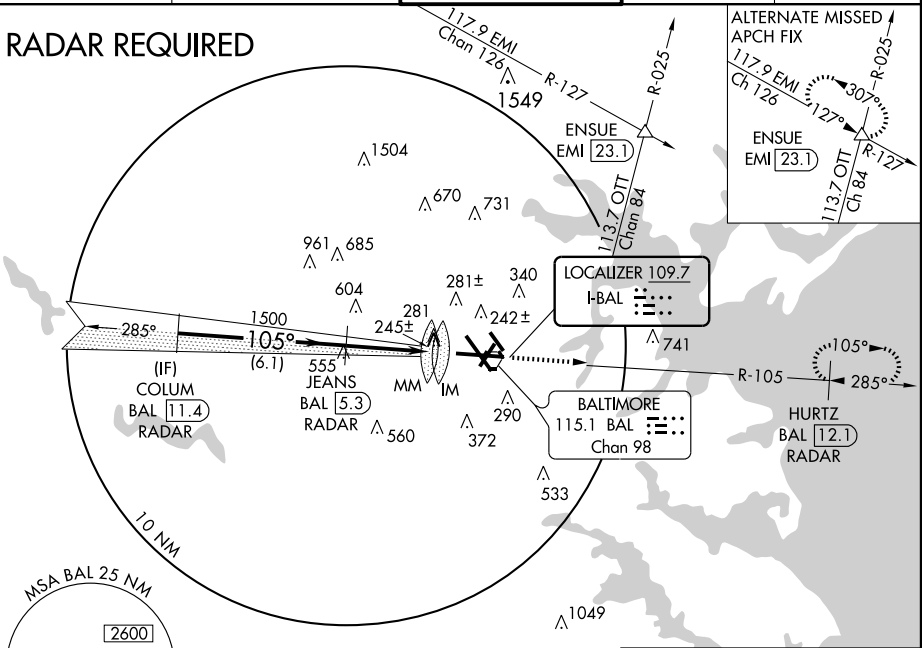
BALTIMORE/
WASHINGTON INTL THURGOOD MARSHALL (BWI)

ILS RWY 10 (CAT II)

DME Required.		ALSF-2 	MISSED APPROACH: Climb to 2500 via BAL R-105 to HURTZ/BAL 12.1 DME/RADAR and hold.		
---------------	--	------------	--	--	--

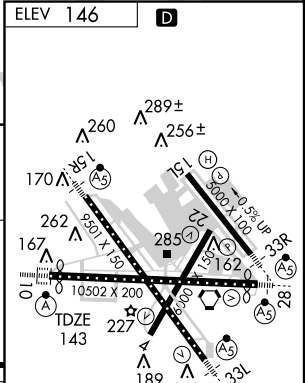
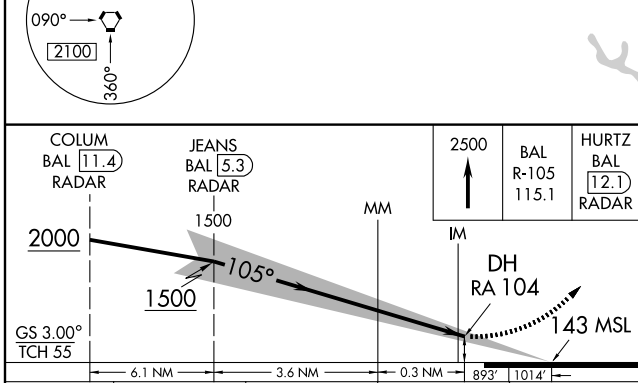
ATIS 115.1 127.8	POTOMAC APP CON 119.7 290.475	BALTIMORE TOWER 119.4 257.8	GND CON 121.9	CLNC DEL 118.05
----------------------------	---	---------------------------------------	-------------------------	---------------------------

RADAR REQUIRED



NE-3, 19 NOV 2009 to 17 DEC 2009

NE-3, 19 NOV 2009 to 17 DEC 2009



CATEGORY	A	B	C	D
S-ILS 10	243/12		100 RA 104	

CATEGORY II ILS - SPECIAL AIRCREW & AIRCRAFT CERTIFICATION REQUIRED

TDZ/CL Rwws 10 and 33L
REIL Rwws 4, 22, 15L, and 33R
HIRL all rwws