

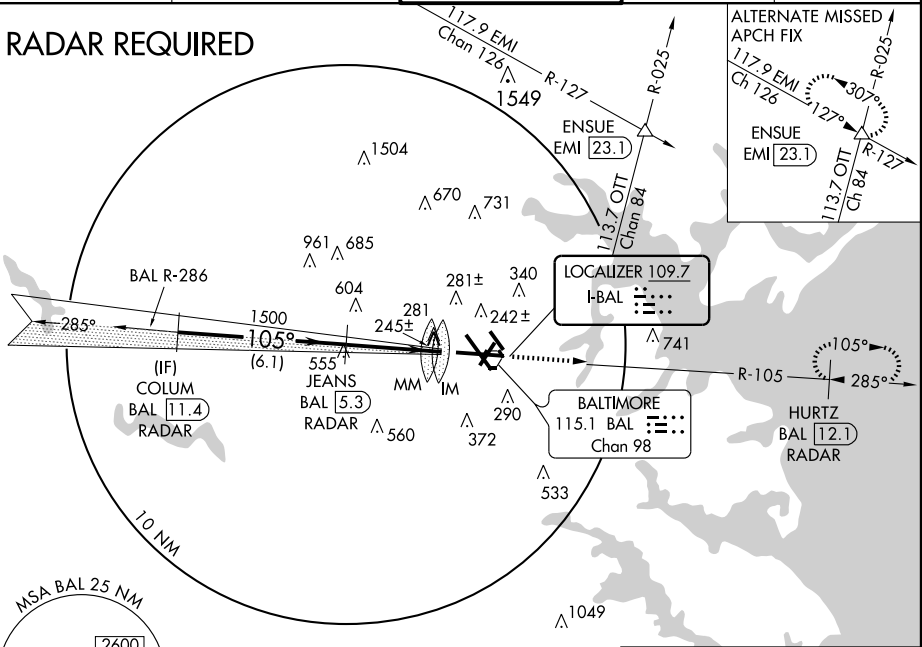
LOC I-BAL 109.7	APP CRS 105°	Rwy Idg 9952 TDZE 143 Apt Elev 146
---------------------------	------------------------	---

BALTIMORE/
WASHINGTON INTL THURGOOD MARSHALL (BWI)
ILS or LOC RWY 10

DME Required.		ALSF-2 	MISSED APPROACH: Climb to 2500 via BAL R-105 to HURTZ/BAL 12.1 DME/RADAR and hold.		
---------------	--	------------	--	--	--

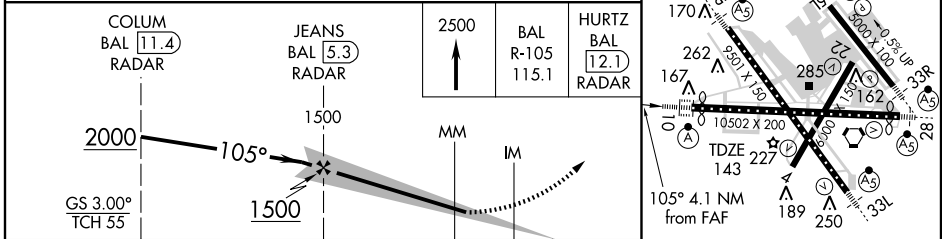
ATIS 115.1 127.8	POTOMAC APP CON 119.7 290.475	BALTIMORE TOWER 119.4 257.8	GND CON 121.9	CLNC DEL 118.05
----------------------------	---	---------------------------------------	-------------------------	---------------------------

RADAR REQUIRED



NE-3, 19 NOV 2009 to 17 DEC 2009

NE-3, 19 NOV 2009 to 17 DEC 2009



CATEGORY	A	B	C	D
S-ILS 10	343/18 200 (200-½)			
S-LOC 10	580/24	437 (500-½)	580/40 437 (500-¾)	580/50 437 (500-1)
CIRCLING	640-1 494 (500-1)		640-1½ 494 (500-1½)	740-2 594 (600-2)

FDZ/CL Rwy 10 and 33L REIL Rwy 4, 22, 15L, and 33R HIRL all rwy					
FAF to MAP 4.1 NM					
Knots	60	90	120	150	180
Min:Sec	4:06	2:44	2:03	1:38	1:22