

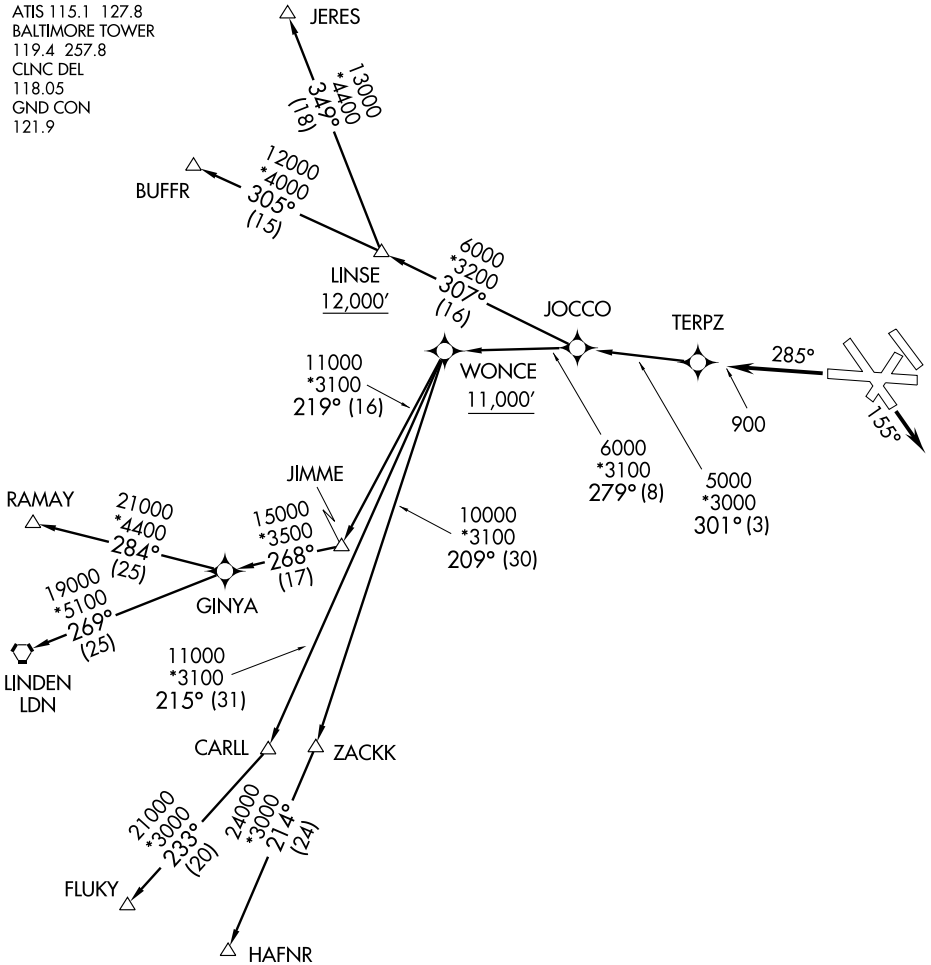
(TERPZ1.TERPZ) 07298

SL-804 (FAA)

BALTIMORE/  
WASHINGTON INTL THURGOOD MARSHALL (BWI)  
BALTIMORE, MARYLAND

# TERPZ ONE DEPARTURE (RNAV)

ATIS 115.1 127.8  
BALTIMORE TOWER  
119.4 257.8  
CLNC DEL  
118.05  
GND CON  
121.9



NE-3, 19 NOV 2009 to 17 DEC 2009

NE-3, 19 NOV 2009 to 17 DEC 2009

### TAKE-OFF OBSTACLES:

Rwy 28: Tree 1392' from DER, 736' left of centerline, 77' AGL/176' MSL.  
Rwy 15R: Multiple Trees beginning 1144' from DER, 740' right of centerline, up to 53' AGL/172' MSL.

NOTE: DME/DME/IRU or GPS Required.  
NOTE: RNAV 1.

NOTE: RADAR required.  
NOTE: Maintain 250 Kias to TERPZ.

### TAKE-OFF MINIMUMS:

Rwys 4, 10, 15L, 28, 33L, 33R: NA - Air Traffic.  
Rwys 15R/28: JERES, BUFFR TRANSITIONS:  
STANDARD with ATC climb of 500' per NM to 12,000'.  
Rwys 15R/28: RAMAY, LINDEN, FLUKY, HAFNR TRANSITIONS:  
STANDARD with ATC climb of 500' per NM to 11,000'.

NOTE: Chart not to scale.

(NARRATIVE ON FOLLOWING PAGE)

TERPZ ONE DEPARTURE (RNAV)  
(TERPZ1.TERPZ) 07298

BALTIMORE/  
WASHINGTON INTL THURGOOD MARSHALL (BWI)  
BALTIMORE, MARYLAND