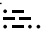
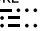


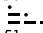
(PALEO3.PALEO) 12096
PALEO THREE DEPARTURE

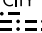
BALTIMORE/
 WASHINGTON INTL THURGOOD MARSHALL (BWI)
 SL-804 (FAA) BALTIMORE, MARYLAND

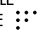
ATIS 115.1 127.8
 CLNC DEL 118.05
 GND CON 121.9
 BALTIMORE TOWER
 119.4 257.8

ARMEL
 113.5 AML 
 Chan 82

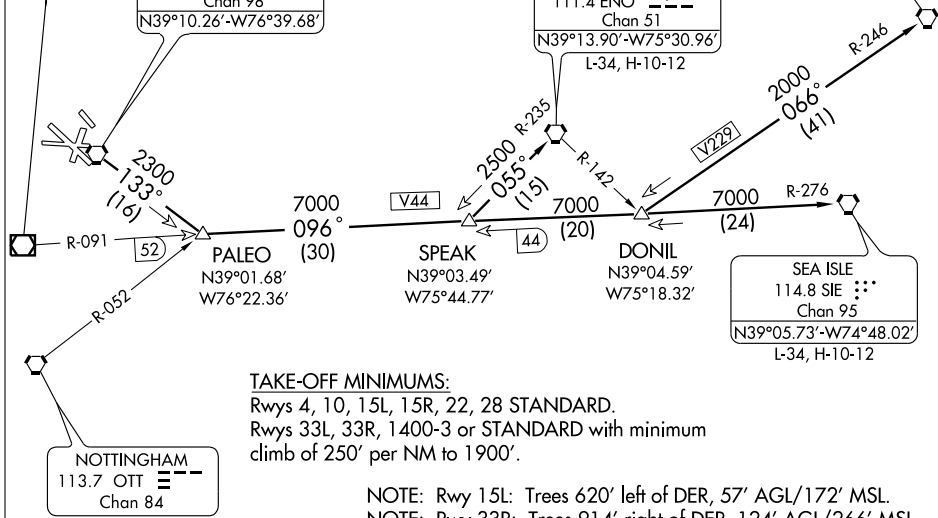
BALTIMORE
 115.1 BAL 
 Chan 98
 N39°10.26'-W76°39.68'

SMYRNA
 111.4 ENO 
 Chan 51
 N39°13.90'-W75°30.96'
 L-34, H-10-12

ATLANTIC CITY
 108.6 ACY 
 Chan 23
 N39°27.35'-W74°34.58'
 L-34, H-10-12

SEA ISLE
 114.8 SIE 
 Chan 95
 N39°05.73'-W74°48.02'
 L-34, H-10-12

NOTTINGHAM
 113.7 OTT 
 Chan 84



TAKE-OFF MINIMUMS:

Rwys 4, 10, 15L, 15R, 22, 28 STANDARD.
 Rwys 33L, 33R, 1400-3 or STANDARD with minimum
 climb of 250' per NM to 1900'.

NOTE: Rwy 15L: Trees 620' left of DER, 57' AGL/172' MSL.
 NOTE: Rwy 33R: Trees 914' right of DER, 124' AGL/266' MSL.
 Trees 648' left of DER, 106' AGL/248' MSL.

NOTE: Chart not to scale.

NE-3, 31 MAY 2012 to 28 JUN 2012

NE-3, 31 MAY 2012 to 28 JUN 2012

DEPARTURE ROUTE DESCRIPTION

TAKE-OFF RWY 28:

JETS: Fly runway heading until 3 DME, then turn left heading 150°. Thence . . .

PROPS: Fly runway heading. Thence . . .

TAKE-OFF ALL OTHER RUNWAYS: Fly runway heading. Thence . . .

. . . . For vectors to transition or assigned route, expect clearance to filed altitude ten minutes after departure.

ATLANTIC CITY TRANSITION (PALEO3.ACY): From over BAL VORTAC via BAL R-133 to PALEO INT, then via SIE VORTAC R-276 to DONIL INT, then via ACY VORTAC R-246 to ACY VORTAC.

SEA ISLE TRANSITION (PALEO3.SIE): From over BAL VORTAC via BAL R-133 to PALEO INT, then via SIE VORTAC R-276 to SIE VORTAC.

SMYRNA TRANSITION (PALEO3.ENO): From over BAL VORTAC via BAL R-133 to PALEO INT, then via SIE VORTAC R-276 to SPEAK INT, then via ENO VORTAC R-235 to ENO VORTAC.