

APP CRS 076°	Rwy Idg 5802
	THRE 727
	Apt Elev 778

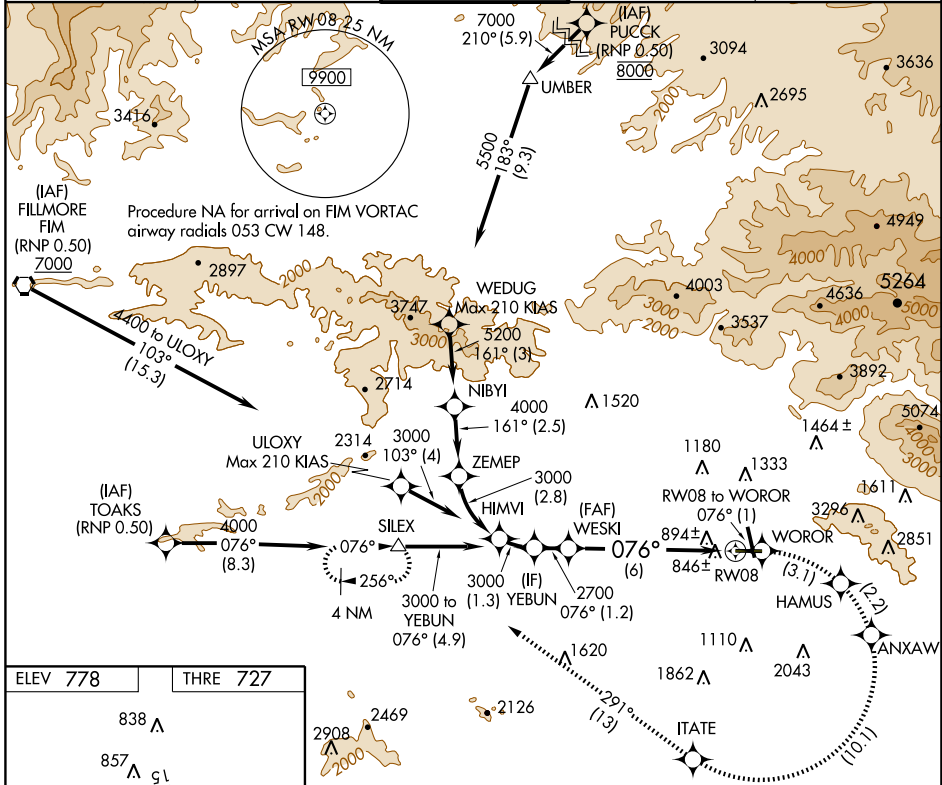
RNAV (RNP) Z RWY 8

BURBANK/BOB HOPE (BUR)

GPS and RF required. For uncompensated Baro-VNAV systems, procedure NA below 0°C (32°F) or above 47°C (116°F). For inoperative MALS/R, increase RNP 0.20 all Cats visibility to 1½ miles and RNP 0.30 all Cats visibility to 1½ miles. When VGSI inop, procedure NA at night. Missed approach requires RNP less than 1.0.

MALS/R
MISSED APPROACH: Climb to 4000 on track 076° to WOROR, right turn to HAMUS, right turn to ANXAW, right turn to ITATE, and on track 291° to SILEX and hold.

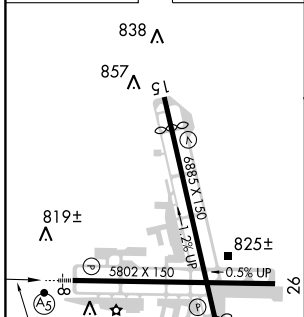
ATIS 134.5	SOCAL APP CON 134.2 338.2	BURBANK TOWER 118.7 254.3	GND CON 123.9 348.6	CLNC DEL 118.0 348.6
----------------------	-------------------------------------	-------------------------------------	-------------------------------	--------------------------------



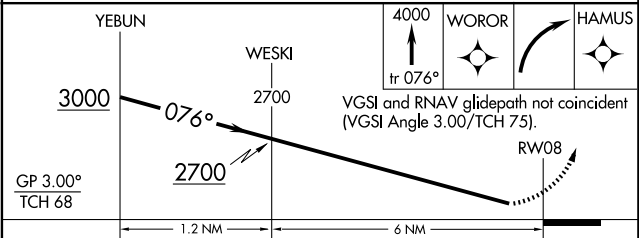
SW-3, 31 MAY 2012 to 28 JUN 2012

SW-3, 31 MAY 2012 to 28 JUN 2012

ELEV 778	THRE 727
----------	----------



MIRL Rwy 15-33
HIRL Rwy 8-26
REIL Rwy 15, 26 and 33



CATEGORY	A	B	C	D
RNP 0.20 DA*		1104/50	377 (400-1)	
RNP 0.30 DA*		1188/50	461 (500-1)	

AUTHORIZATION REQUIRED