

WAAS CH 81811 W32A	APP CRS 318°	Rwy Idg TDZE Apt Elev	6121 713 727
--	------------------------	-----------------------------	---

RNAV (GPS) RWY 32

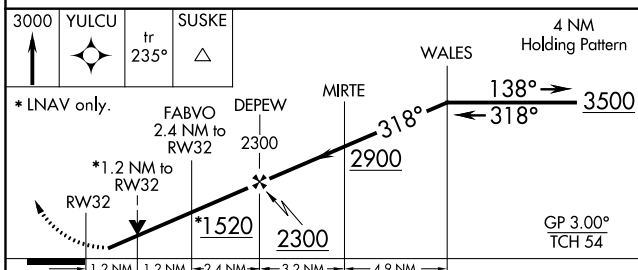
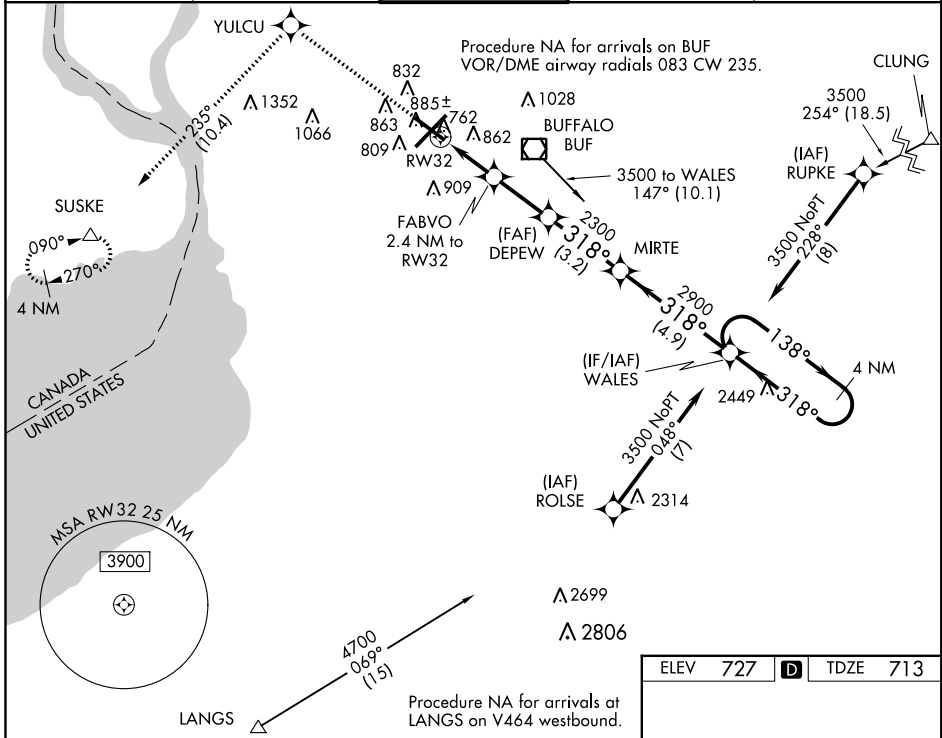
BUFFALO NIAGARA INTL (BUF)

▼ For uncompensated Baro-VNAV systems LNAV/VNAV NA below -17°C (2°F) or above 39°C (102°F). DME/DME RNP-0.3 NA. Visibility reduction by helicopters NA. For inop MALS, increase LNAV/VNAV, all Cats visibility to 1½ mile. Inop table does not apply to LPV all Cats.



MISSED APPROACH: Climb to 3000 direct YULCU on track 235° to SUSKE and hold.

D-ATIS 135.35	BUFFALO APP CON 126.15 263.125	BUFFALO TOWER 120.5 257.8	GND CON 133.2 257.8	CLNC DEL 124.7 257.8
-------------------------	--	-------------------------------------	-------------------------------	--------------------------------



CATEGORY	A	B	C	D
LPV DA		913-¾	200 (200-¾)	
LNAV/VNAV DA		1092-¾	379 (400-¾)	
LNAV MDA		1140-¾	427 (500-¾)	
CIRCLING	1200-1	473 (500-1)	1200-1½ 473 (500-1½)	1280-2 553 (600-2)

ELEV 727	D	TDZE 713
----------	----------	----------

TWR 885

745±

819

754

820

779

731±

694

318° to RW32

REIL Rwy 14
TDZ/CL Rws 5 and 23
HIRL Rws 5-23 and 14-32

NE-2, 07 DEC 2017 to 04 JAN 2018

NE-2, 07 DEC 2017 to 04 JAN 2018