

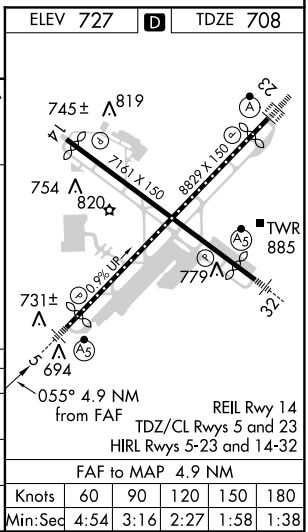
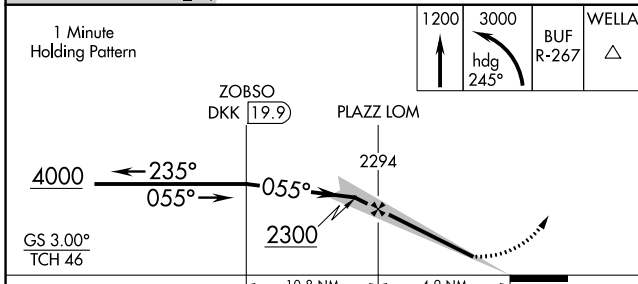
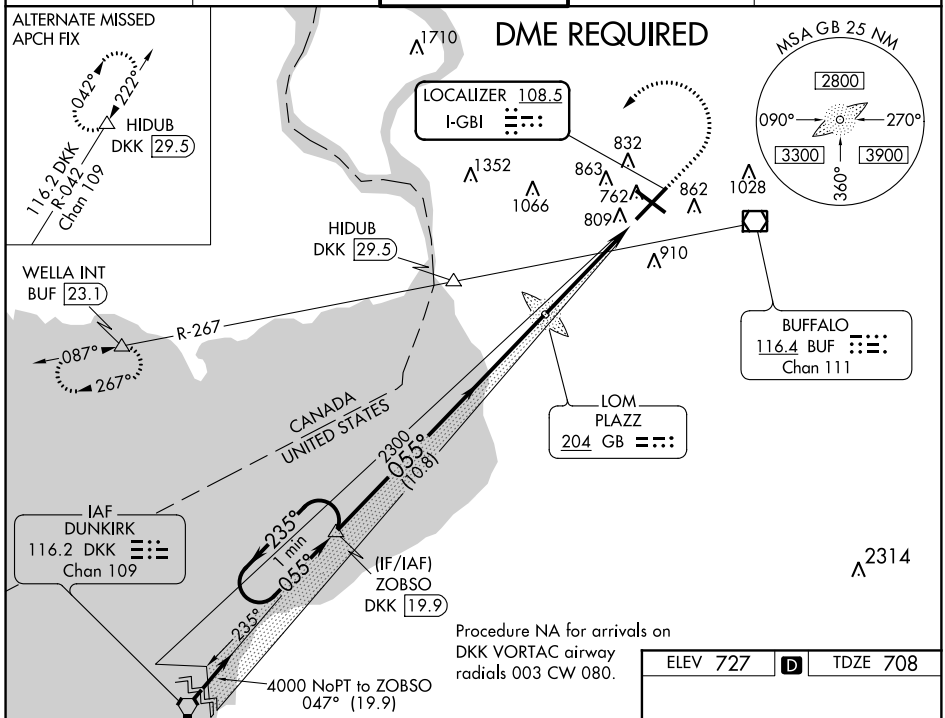
LOC I-GBI 108.5	APP CRS 055°	Rwy Idg TDZE Apt Elev	7758 708 727
---------------------------	------------------------	-----------------------------	---

ILS or LOC RWY 5

BUFFALO NIAGARA INTL (BUF)

	MALS R	MISSED APPROACH: Climb to 1200 then climbing left turn to 3000 on heading 245° and BUF VOR/DME R-267 to WELLA INT/BUF 23.1 DME and hold.
--	--------	--

D-ATIS 135.35	BUFFALO APP CON 126.15 263.125	BUFFALO TOWER 120.5 257.8	GND CON 133.2 257.8	CLNC DEL 124.7 257.8
-------------------------	--	-------------------------------------	-------------------------------	--------------------------------



CATEGORY	A	B	C	D
S-ILS 5	908/18 200 (200-½)			
S-LOC 5	1100/24	392 (400-½)	1100/40	392 (400-¾)
CIRCLING	1200-1 473 (500-1)		1200-1½ 473 (500-1½)	1280-2 553 (600-2)

NE-2, 12 OCT 2017 to 09 NOV 2017

NE-2, 12 OCT 2017 to 09 NOV 2017