

WAAS CH 65812 W33A	APP CRS 326°	Rwy Idg 7819 TDZE 335 Apt Elev 335
--	------------------------	--

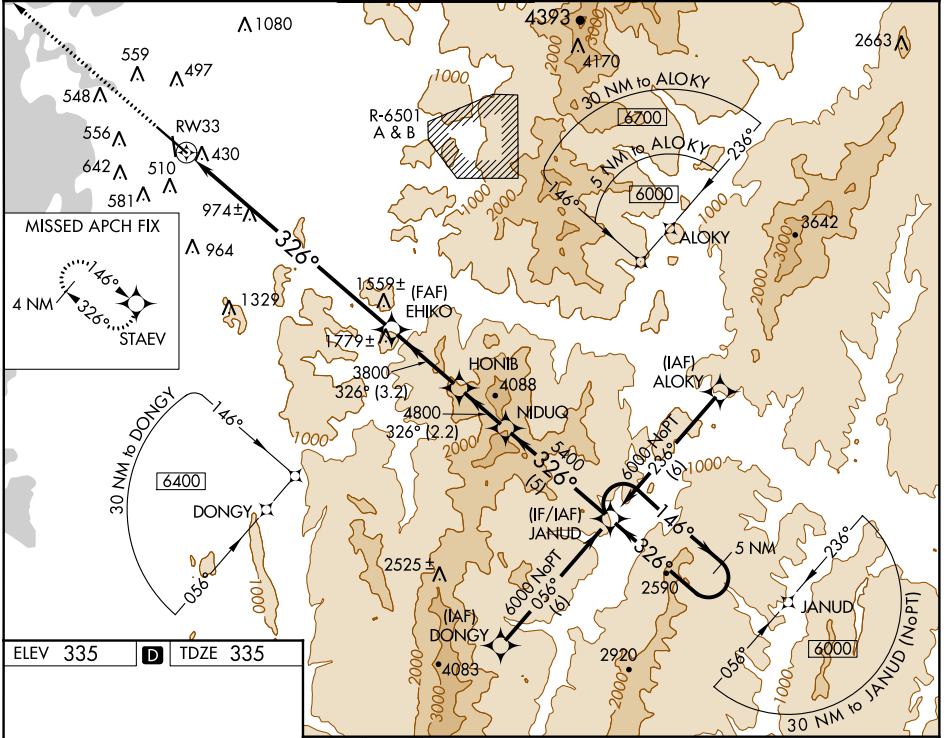
RNAV (GPS) Z RWY 33

BURLINGTON INTL (BTV)

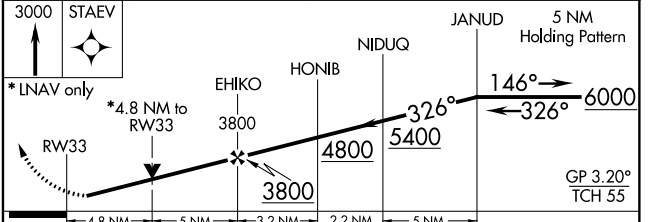
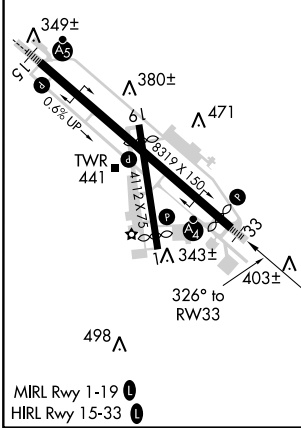
⚠ Circling to Rwy 1 NA at night. Inoperative table does not apply.
 For uncompensated Baro-VNAV systems, LNAV/VNAV NA below -1.5°C (5°F) or above 54°C (130°F). DME/DME RNP-0.3 NA.
❄ -10°C Helicopter visibility reduction below ¾ SM NA.

MALSF MISSED APPROACH: Climb to 3000 direct STAEV and hold.

ATIS 123.8 269.9	BURLINGTON APP CON * 121.1 278.8	BURLINGTON TOWER * 118.3 (CTAF) 0 257.8	BURLINGTON RADIO 122.6 255.4	GND CON 126.3 348.6	CLNC DEL 119.15
----------------------------	--	---	--	-------------------------------	---------------------------



ELEV 335	D	TDZE 335
----------	----------	----------



CATEGORY	A	B	C	D	E
LPV DA	535/40	200 (200-¾)	585/50 250 (300-1)		
LNAV/VNAV DA	1782-5 1447 (1500-5)				
LNAV MDA	2000/60 1665 (1700-1½)	2000-1½ 1665 (1700-1½)	2000-3 1665 (1700-3)		
CIRCLING	2000-1¼ 1665 (1700-1¼)	2000-1½ 1665 (1700-1½)	2000-3 1665 (1700-3)		

NE-1, 14 SEP 2017 to 12 OCT 2017

NE-1, 14 SEP 2017 to 12 OCT 2017