

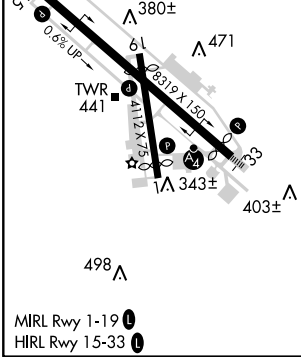
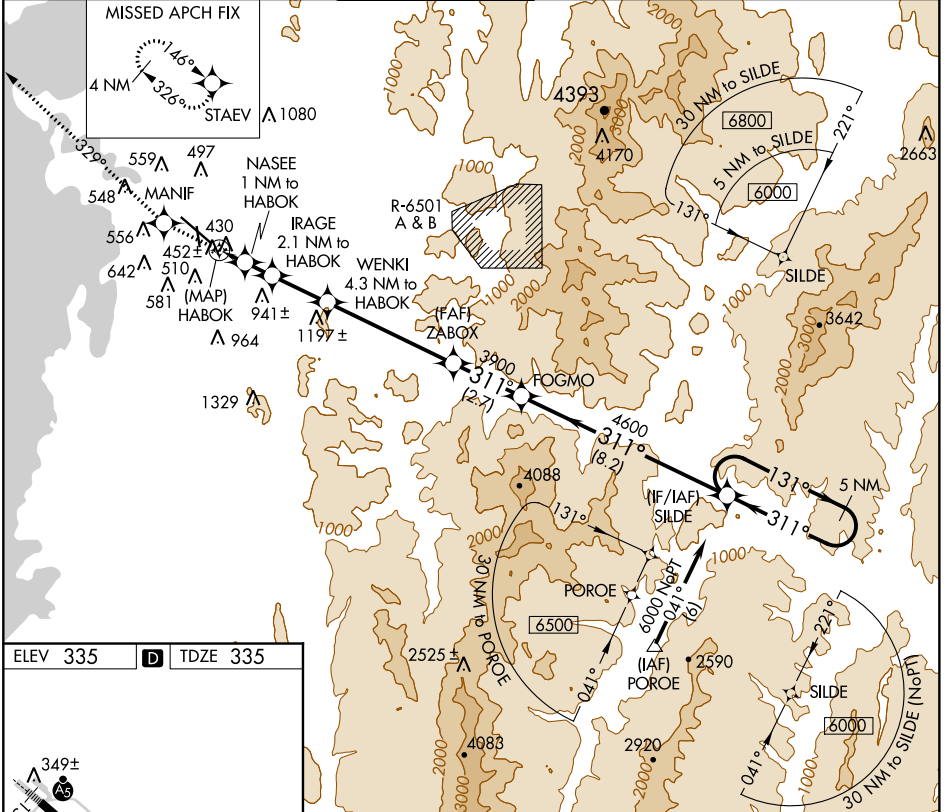
APP CRS	Rwy Idg	<b>7819</b>
<b>311°</b>	TDZE	<b>335</b>
	Apt Elev	<b>335</b>

# RNAV (GPS) Y RWY 33

BURLINGTON INTL (BTV)

Circling to Rwy 1 NA at night. DME/DME RNP-0.3 NA. Helicopter visibility reduction below 3/4 SM NA. -10°C	MALS	MISSED APPROACH: Climb to 3000 direct MANIF and via track 329° to STAEV and hold.
---	------	---

ATIS	BURLINGTON APP CON *	BURLINGTON TOWER *	BURLINGTON RADIO	GND CON	CLNC DEL
<b>123.8 269.9</b>	<b>121.1 278.8</b>	<b>118.3 (CTAF) 257.8</b>	<b>122.6 255.4</b>	<b>126.3 348.6</b>	<b>119.15</b>



3000	MANIF	tr 329°	STAEV	WENKI 4.3 NM to HABOK	ZABOX	FOGMO	SILDE	5 NM Holding Pattern		
				IRAGE 2.1 NM to HABOK						
				NASEE 1 NM to HABOK						
				HABOK HABOK						
				3.47° TCH 53	940	1320	2120	3900		
								4600		
								311°		
								131°		
								6000		
								311°		
								6000		
								VGSI and descent angles not coincident. (VGSI Angle 3.20/TCH 53).		
	0.5	1 NM	1.1 NM	2.2 NM	5 NM	2.7 NM	8.2 NM			
CATEGORY	A		B		C		D		E	
LNAV MDA	720/40		385 (400-3/4)		720/60		385 (400-1/4)			
CIRCLING	840-1 505 (600-1)		860-1 525 (600-1)		860-1 1/2 525 (600-1 1/2)		1000-2 665 (700-2)		1280-3 945 (1000-3)	

NE-1, 07 DEC 2017 to 04 JAN 2018

NE-1, 07 DEC 2017 to 04 JAN 2018