

LOC/DME I-BTV 110.3 Chan 40	APP CRS 146°	Rwy Idg TDZE Apt Elev	7820 326 335
--	------------------------	-----------------------------	---

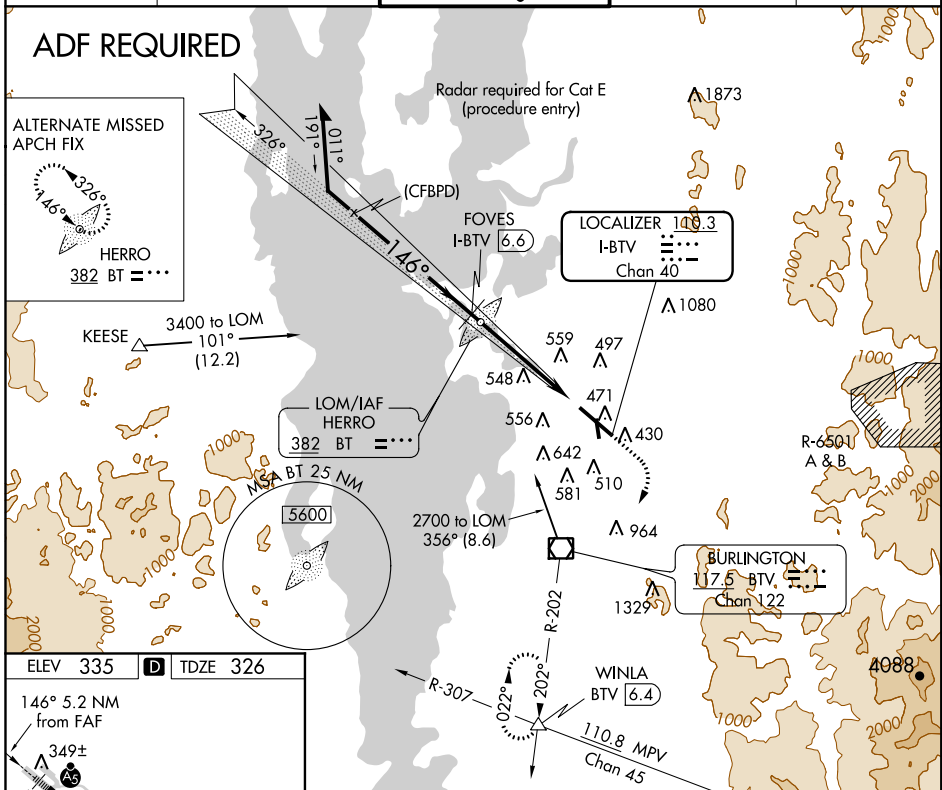
ILS or LOC/DME RWY 15

BURLINGTON INTL (BTV)

▲ For inop MALSR, increase S-LOC 15 Cat C, D, and E visibility to RVR 5000. Night landing: Rwy 1 NA. DME required.
▲ *RVR 1800 authorized with the use of FD or AP or HUD to DA.

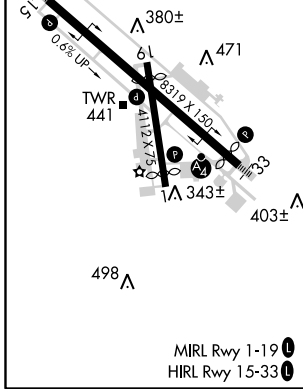
MALSR MISSED APPROACH: Climb to 800 then climbing right turn to 3000 direct BTV VOR/DME on BTV VOR/DME R-202 to WINLA INT/BTV 6.4 DME and hold.

ATIS 123.8 269.9	BURLINGTON APP CON * 121.1 278.8	BURLINGTON TOWER * 118.3 (CTAF) 0 257.8	BURLINGTON RADIO 122.6 255.4	GND CON 126.3 348.6
----------------------------	--	---	--	-------------------------------



NE-1, 27 APR 2017 to 25 MAY 2017

NE-1, 27 APR 2017 to 25 MAY 2017



Remain within 10 NM	BT LOM 2400	800	3000	BTV	BTV R-202	WINLA
2200	2000	2000	2000	2.5	1.1 NM	Procedure turn NA for Cat E.
GS 3.00° TCH 51	4.1 NM	1.1 NM				

CATEGORY	A	B	C	D	E
S-ILS 15	* 526/24 200 (200-½)				
S-LOC 15	700/24	374 (400-½)	700/35 374 (400-¾)		
CIRCLING	840-1 505 (600-1)	860-1 525 (600-1)	1200-2½ 865 (900-2½)	1380-3	1045 (1100-3)