

WAAS CH 69525 W33A	APP CRS 331°	Rwy Idg 10083 THRE 15 Apt Elev 20
--	------------------------	--

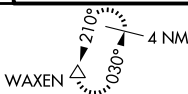
RNAV (GPS) RWY 33L

BOSTON/GENERAL EDWARD LAWRENCE LOGAN INTL (BOS)

<p>▽ DME/DME RNP-0.3 NA. Circling NA to Rwy 14. Circling NA for Cats C and D west of Rwys 4L and 15R. For uncompensated Baro-VNAV systems, LNAV/VNAV NA below -13°C (9°F) or above 43°C (109°F).</p>	<p>MALSR AS</p>	<p>MISSED APPROACH: Climb to 600 then climbing right turn to 3000 direct WAXEN and hold.</p>
---	----------------------------	---

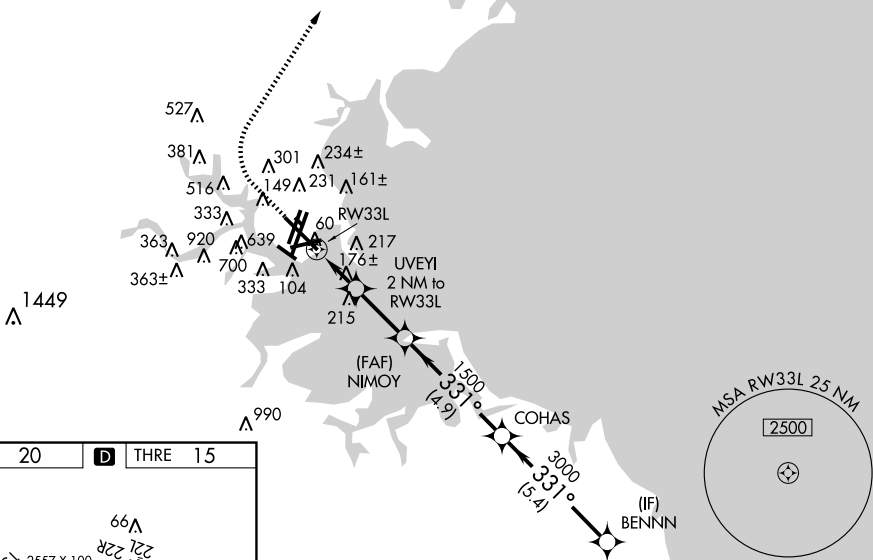
<p>ATIS ARR 135.0 DEP 127.875</p>	<p>BOSTON APP CON 120.6 263.1</p>	<p>BOSTON TOWER 128.8 257.8</p>	<p>GND CON 121.9</p>	<p>CLNC DEL 121.65 257.8</p>
---	--	--	---------------------------------	---

RADAR REQUIRED

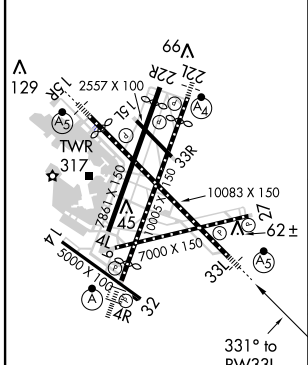


NE-1, 31 MAY 2012 to 28 JUN 2012

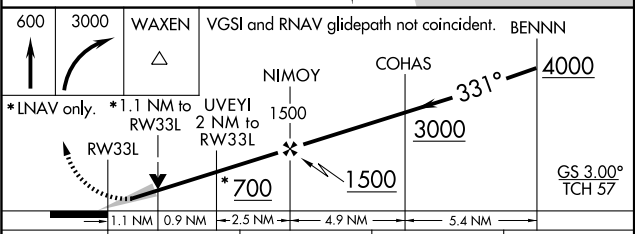
NE-1, 31 MAY 2012 to 28 JUN 2012



ELEV 20	D	THRE 15
---------	----------	---------



TDZ/CL Rwys 4R, 15R and 33L
REIL Rwys 4L, 27 and 32
MIRL Rwy 15L-33R
HIRL Rwys 4L-22R, 4R-22L, 14-32, 15R-33L and 9-27



CATEGORY	A	B	C	D
LPV DA		215/24	200 (200-½)	
LNAV/VNAV DA		323/24	308 (400-½)	
LNAV MDA	440/24	425 (500-½)	440/40	425 (500-¾)
CIRCLING	940-1¼ 920 (1000-1¼)	1000-1½ 980 (1000-1½)	640-1¾ 620 (700-1¾)	640-2 620 (700-2)