

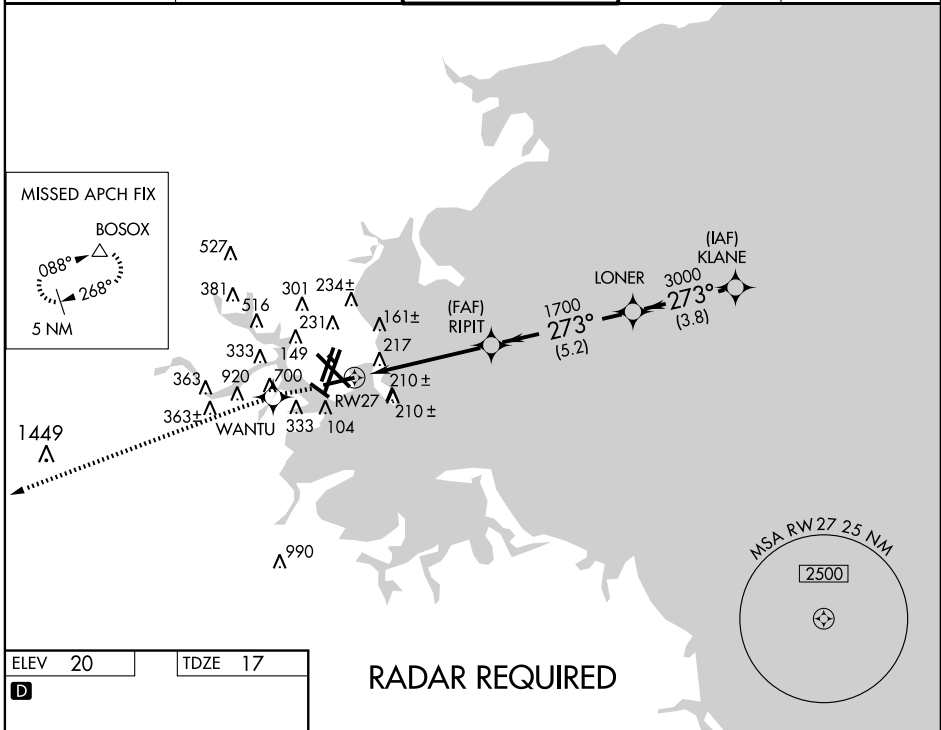
APP CRS	Rwy Idg	7000
273°	TDZE	17
	Apt Elev	20

RNAV (GPS) RWY 27

BOSTON/GENERAL EDWARD LAWRENCE LOGAN INTL (BOS)

	MISSED APPROACH: Climb to 3000 direct WANTU WP and 267° track to BOSOX WP and hold.
--	---

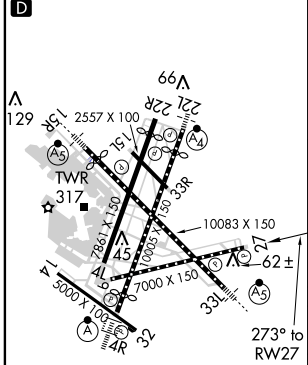
ATIS ARR 135.0 DEP 127.875	BOSTON APP CON 120.6 263.1	BOSTON TOWER 128.8 257.8	GND CON 121.9	CLNC DEL 121.65 257.8
--	--------------------------------------	------------------------------------	-------------------------	---------------------------------



NE-1, 31 MAY 2012 to 28 JUN 2012

NE-1, 31 MAY 2012 to 28 JUN 2012

ELEV 20	TDZE 17
---------	---------



TDZ/CL Rwys 4R, 15R and 33L
 REIL Rwys 4L, 27 and 32
 MIRL Rwy 15L-33R
 HIRL Rwys 4L-22R, 4R-22L, 14-32, 15R-33L and 9-27

RADAR REQUIRED

3000	↑	WANTU	tr 267°	BOSOX	△	VGSi and RNAV glidepath not coincident (VGSi Angle 3.00/TCH 71).	KLANE
*LNAV only		*1.7 NM to RW27		RIPIT	LONER		4000
		RW27		1700		GS 3.00° TCH 57	
		1.7 NM		3.3 NM		5.2 NM	
				3000		273°	
				1700		3.8 NM	
CATEGORY	A						
GLS PA DA	NA						
LNAV/VNAV DA	504-1 3/4 487 (500-1 3/4)						
LNAV MDA	640-1	623 (700-1)	640-1 3/4	623 (700-1 3/4)	640-2	623 (700-2)	
CIRCLING	940-1 1/4	920 (1000-1 1/4)	1000-1 1/2	980 (1000-1 1/2)	640-1 3/4	620 (700-1 3/4)	640-2
							620 (700-2)

RNAV (GPS) RWY 27