

| | | | |
|--|------------------------|---|-------------|
| WAAS CH 50124 W04A | APP CRS 036° | Rwy Idg THRE 18 Apt Elev 20 | 8851 |
|--|------------------------|---|-------------|

RNAV (GPS) RWY 4R

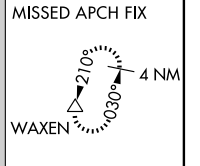
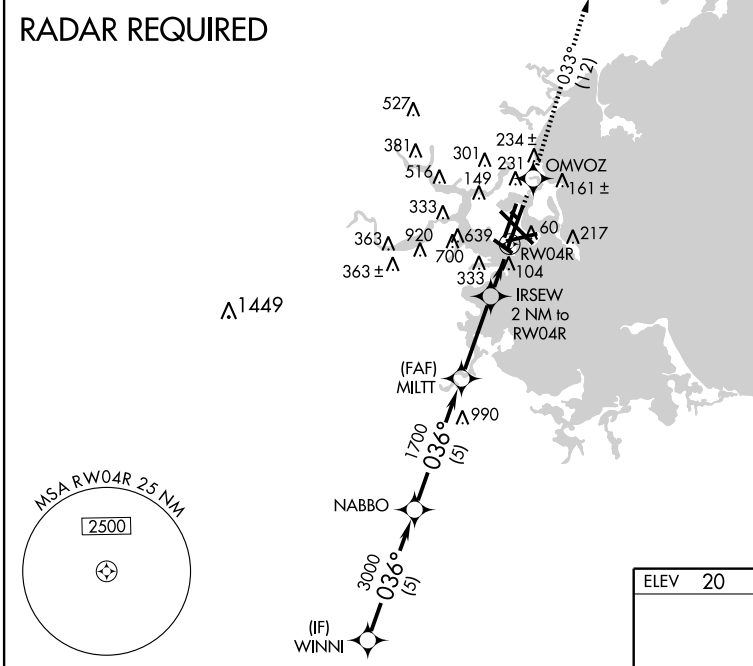
BOSTON/GENERAL EDWARD LAWRENCE LOGAN INTL (BOS)

▼ DME/DME RNP-0.3 NA. Circling NA for Cats C and D west of Rwys 4L and 15R. For uncompensated Baro-VNAV systems, LNAV/VNAV NA below -13°C (9°F) or above 43°C (109°F). When control tower reports tall vessels in approach area: increase LPV DA to 374 and all Cats visibility to RVR 4000, increase LNAV Cats A and B visibility to RVR 4000; for inoperative ALSF, increase LPV all Cats visibility to RVR 6000 and LNAV Cats A and B visibility to RVR 5000; visibility reduction by helicopters NA. When vessels taller than 144 feet present, LPV and LNAV/VNAV NA.

ALSF-2

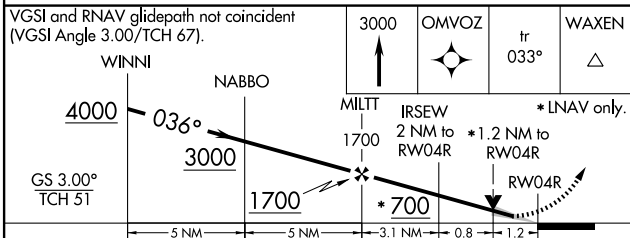
MISSED APPROACH:
Climb to 3000 direct OMVOZ and on track 033° to WAXEN and hold.

| | | | | |
|--|--------------------------------------|------------------------------------|-------------------------|---------------------------------|
| ARR 135.0 DEP 127.875 | BOSTON APP CON 120.6 263.1 | BOSTON TOWER 128.8 257.8 | GND CON 121.9 | CLNC DEL 121.65 257.8 |
|--|--------------------------------------|------------------------------------|-------------------------|---------------------------------|



NE-1, 31 MAY 2012 to 28 JUN 2012

NE-1, 31 MAY 2012 to 28 JUN 2012



| | |
|---------|------------------|
| ELEV 20 | D THRE 18 |
|---------|------------------|

TDZ/CL Rwys 4R, 15R and 33L
REIL Rwys 4L, 27 and 32
MIRL Rwy 15L-33R
HIRL Rwys 4L-22R, 4R-22L, 14-32, 15R-33L and 9-27

| CATEGORY | A | B | C | D |
|--------------|-------------------------|--------------------------|------------------------|----------------------|
| LPV DA | | 218/24 | 200 (200-½) | |
| LNAV/VNAV DA | | 511/60 | 493 (500-1¼) | |
| LNAV MDA | 480/24 | 462 (500-½) | 480/50 | 462 (500-1) |
| CIRCLING | 940-1¼ 920 (1000-1¼) | 1000-1½ 980 (1000-1½) | 640-1¾ 620 (700-1¾) | 640-2 620 (700-2) |

RNAV (GPS) RWY 4R