

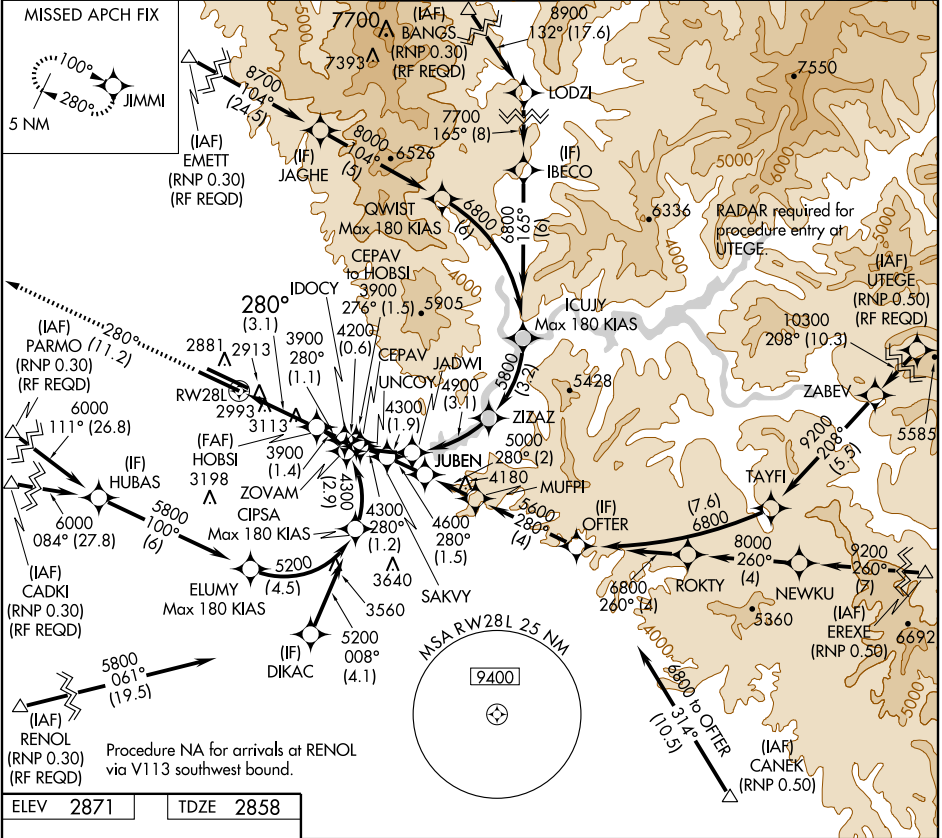
APP CRS	Rwy Idg	<b>9763</b>
<b>280°</b>	TDZE	<b>2858</b>
	Apt Elev	<b>2871</b>

# RNAV (RNP) Z RWY 28L

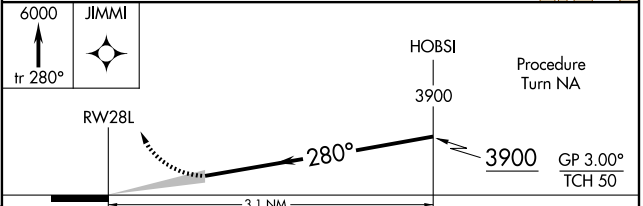
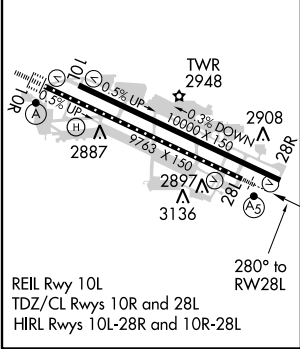
BOISE AIR TERMINAL (GOWEN FIELD) (BOI)

GPS required. For uncompensated Baro-VNAV systems, procedure NA below -14°C (7°F) or above 42°C (107°F). For inoperative MALSR increase RNP 0.15 and RNP 0.25 visibility to RVR 6000, and RNP 0.30 to 1½. MALSR MISSED APPROACH: Climb to 6000 via track 280° to JIMMI and hold, continue climb-in-hold to 6000.

ATIS <b>123.9 290.4</b>	BOISE APP CON <b>119.6 269.4</b>	BOISE TOWER <b>118.1 257.8</b>	GND CON <b>121.7 348.6</b>	CLNC DEL <b>125.9 323.2</b>
----------------------------	-------------------------------------	-----------------------------------	-------------------------------	--------------------------------



ELEV 2871	TDZE 2858
-----------	-----------



CATEGORY	A	B	C	D
RNP 0.15 DA		3228/40	370 (400-¾)	
RNP 0.25 DA		3250/50	392 (400-1)	
RNP 0.30 DA		3315/60	457 (500-1½)	

## AUTHORIZATION REQUIRED