

APP CRS	Rwy Idg	<b>9763</b>
<b>100°</b>	TDZE	<b>2836</b>
	Apt Elev	<b>2871</b>

# RNAV (RNP) Z RWY 10R

BOISE AIR TERMINAL (GOWEN FIELD) (BOI)

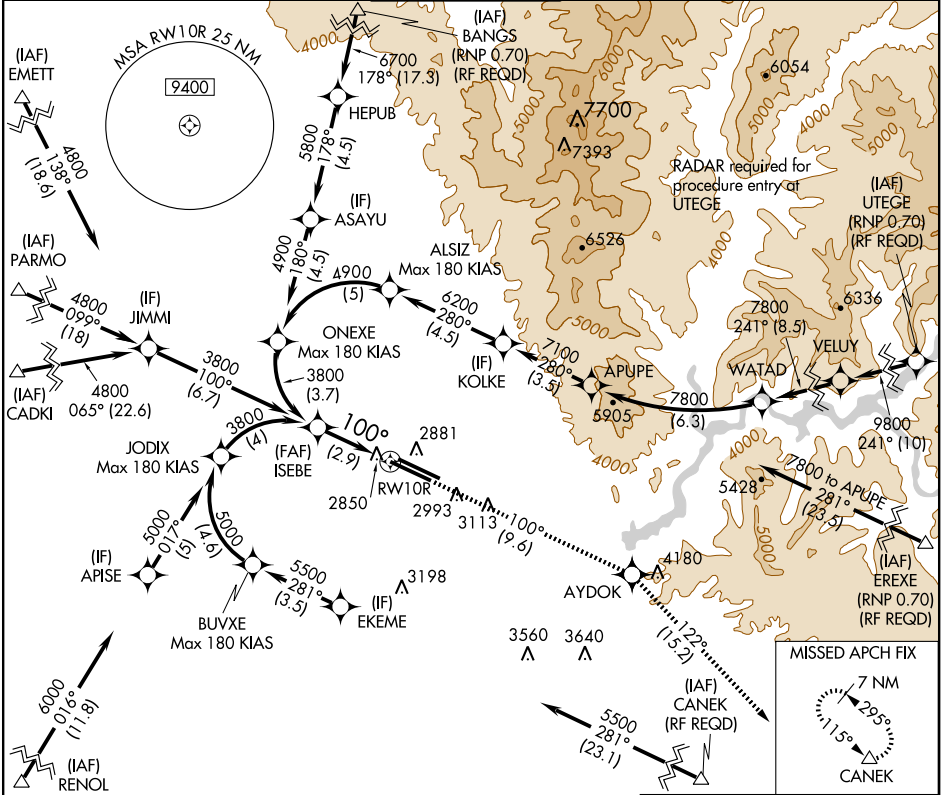
GPS required. For uncompensated Baro-VNAV systems, procedure NA below -14°C (7°F) or above 42°C (107°F). For inoperative SSALR increase RNP 0.15 and RNP 0.30 visibility all Cats to RVR 5000.

ALSIF-2



MISSED APPROACH: Climb to 7200 via track 100° to AYDOK and via track 122° to CANEK and hold.

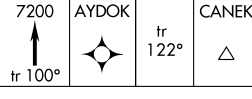
ATIS <b>123.9 290.4</b>	BOISE APP CON <b>119.6 269.4</b>	BOISE TOWER <b>118.1 257.8</b>	GND CON <b>121.7 348.6</b>	CLNC DEL <b>125.9 323.2</b>
----------------------------	-------------------------------------	-----------------------------------	-------------------------------	--------------------------------



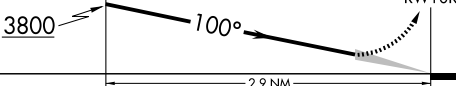
Procedure NA for arrivals at RENOL via V113 southwest bound.

VGSI and RNAV glidepath not coincident (VGSI Angle 3.00/TCH 55).

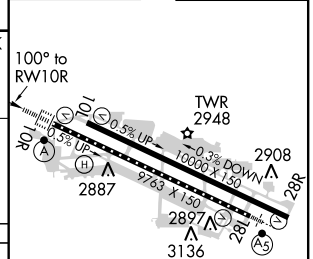
Procedure Turn NA



GP 3.00°  
TCH 58



ELEV 2871	TDZE 2836
-----------	-----------



CATEGORY	A	B	C	D
RNP 0.15 DA		3115/24	279 (300-½)	
RNP 0.30 DA		3151/40	315 (300-¾)	

## AUTHORIZATION REQUIRED

REIL Rwy 10L  
TDZ/CL Rwy 10R and 28L  
HIRL Rwy 10L-28R and 10R-28L

NW-1, 31 MAY 2012 to 28 JUN 2012

NW-1, 31 MAY 2012 to 28 JUN 2012