

APP CRS	Rwy Idg	<b>10000</b>
<b>100°</b>	TDZE	<b>2844</b>
	Apt Elev	<b>2871</b>

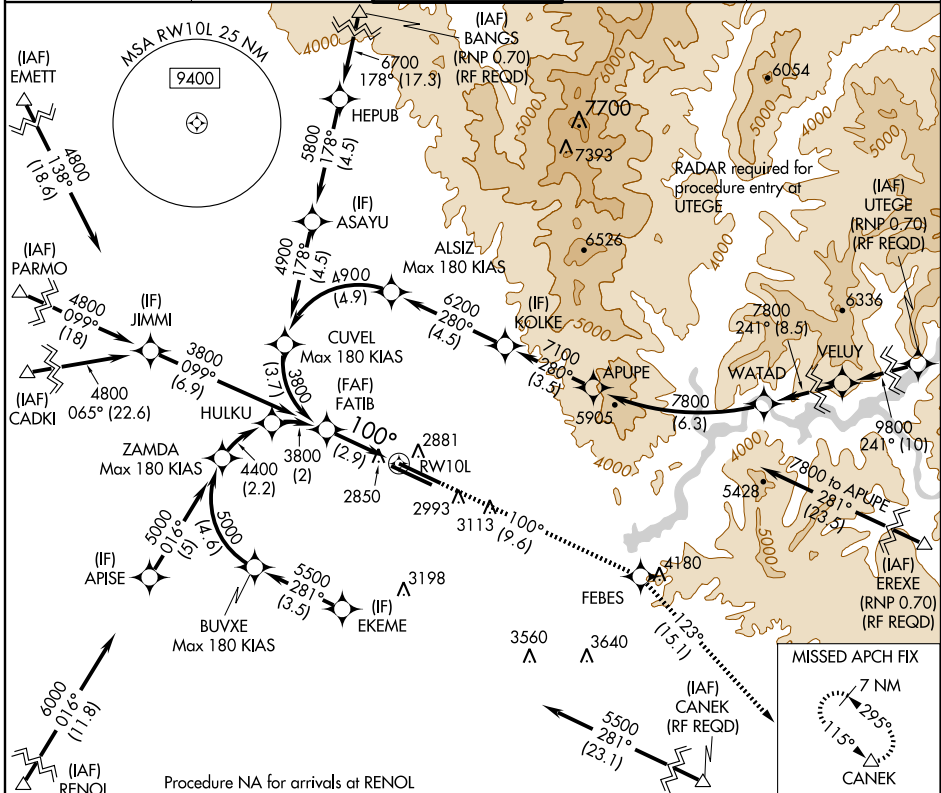
# RNAV (RNP) Z RWY 10L

BOISE AIR TERMINAL (GOWEN FIELD) (BOI)

**GPS required.** For uncompensated Baro-VNAV systems, procedure NA below -14°C (7°F) or above 41°C (107°F). When VGSI inoperative, procedure NA at night.

**MISSED APPROACH:** Climb to 7200 via track 100° to FEBES and via track 123° to CANEK and hold.

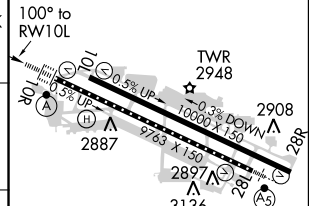
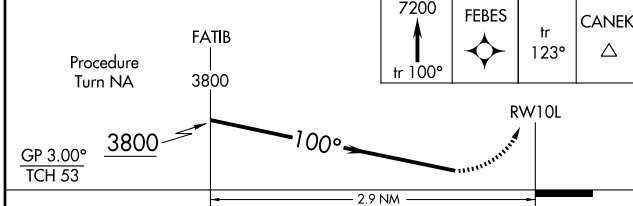
ATIS	BOISE APP CON	BOISE TOWER	GND CON	CLNC DEL
<b>123.9 290.4</b>	<b>119.6 269.4</b>	<b>118.1 257.8</b>	<b>121.7 348.6</b>	<b>125.9 323.2</b>



NW-1, 31 MAY 2012 to 28 JUN 2012

NW-1, 31 MAY 2012 to 28 JUN 2012

ELEV	2871	TDZE	2844
------	------	------	------



CATEGORY	A	B	C	D
RNP 0.18 DA		3145-1	301 (300-1)	
RNP 0.30 DA		3175-1¼	331 (400-1¼)	

## AUTHORIZATION REQUIRED

REIL Rwy 10L  
 TDZ/CL Rwys 10R and 28L  
 HIRL Rwys 10L-28R and 10R-28L