

RNAV (GPS) Y RWY 28R

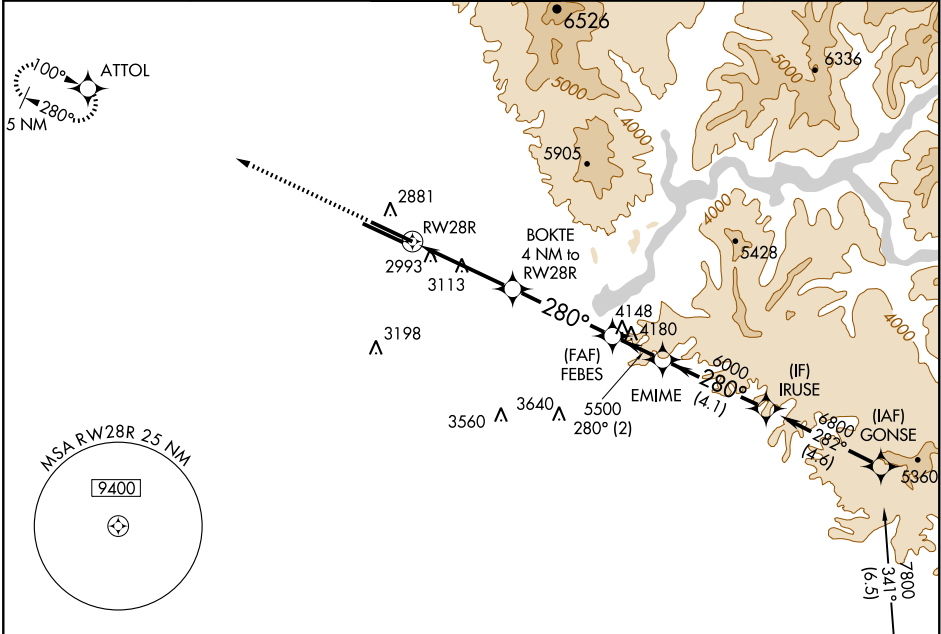
BOISE AIR TERMINAL (GOWEN FIELD) (BOI)

WAAS CH 65803 W28B	APP CRS 280°	Rwy Idg 10000 TDZE 2871 Apt Elev 2871
--	------------------------	--

▼ For uncompensated Baro-VNAV systems, LNAV/VNAV NA below -20°C (-4°F) or above 43°C (109°F).
DME/DME RNP-0.3 NA. Circling NA north of Rwy 10L-28R.

MISSED APPROACH: Climb to 6000 direct ATTOL and hold, continue climb-in-hold to 6000.

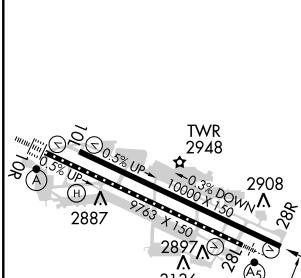
ATIS 123.9 290.4	BOISE APP CON 119.6 269.4	BOISE TOWER 118.1 257.8	GND CON 121.7 348.6	CLNC DEL 125.9 323.2
----------------------------	-------------------------------------	-----------------------------------	-------------------------------	--------------------------------



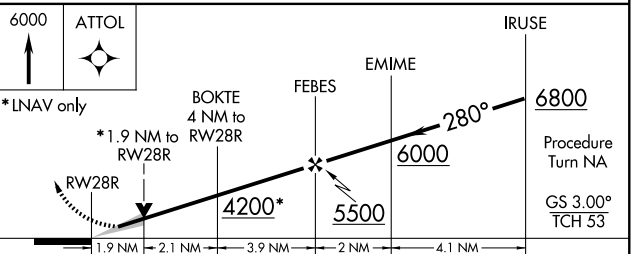
NW-1, 31 MAY 2012 to 28 JUN 2012

NW-1, 31 MAY 2012 to 28 JUN 2012

ELEV 2871	TDZE 2871
-----------	-----------



Procedure NA for arrivals at CANEK via V4-253-330 southeast bound.



CATEGORY	A	B	C	D
LPV DA	3147/50 276 (300-1)			
LNAV/VNAV DA	3271-1½ 400 (400-1½)			
LNAV MDA	3520/50	649 (700-1)	3520-1¾ 649 (700-1¾)	3520-2 649 (700-2)
CIRCLING	3520-1	649 (700-1)	3520-1¾ 649 (700-1¾)	3520-2 649 (700-2)

REIL Rwy 10L
TDZ/CL Rwy 10R and 28L
HIRL Rwy 10L-28R and 10R-28L