


BOISE, IDAHO

AL-57 (FAA)

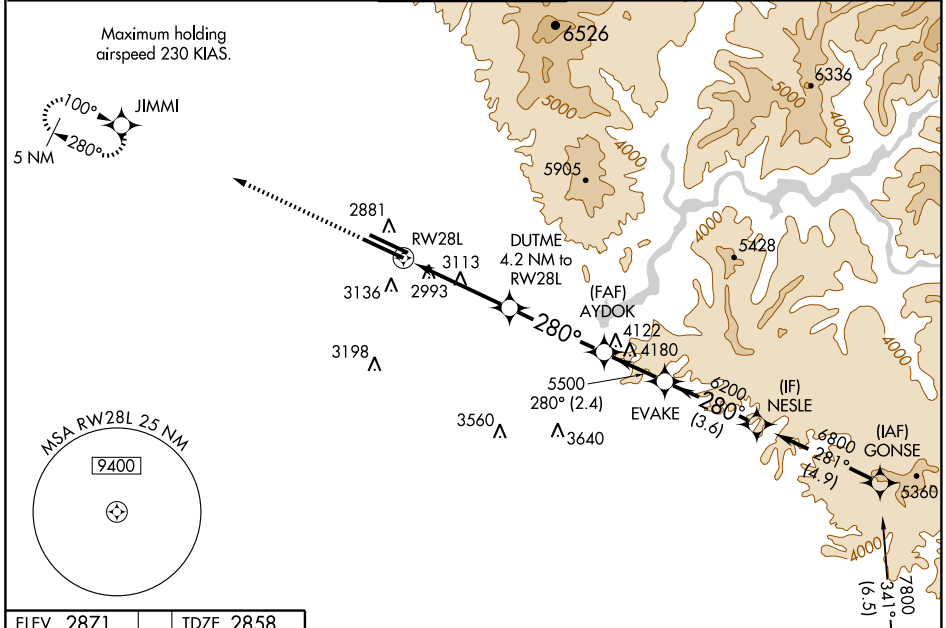
RNAV (GPS) Y RWY 28L

BOISE AIR TERMINAL (GOWEN FIELD) (BOI)

WAAS CH 77702 W28A	APP CRS 280°	Rwy Idg TDZE Apt Elev	9763 2858 2871
--	------------------------	-----------------------------	---

<p>⚠ Circling NA north of Rwy 10L-28R. For uncompensated Baro-VNAV systems, LNAV/VNAV NA below -20°C (-4°F) or above 43°C (109°F). DME/DME RNP-0.3 NA.</p> <p>For inoperative MALSR, increase LPV visibility to RVR 5000 all Cats, LNAV/VNAV Cat E to 1½, and LNAV Cat E to 2¼.</p>	<p>MALSR</p> 	<p>MISSED APPROACH: Climb to 5000 direct JIMMI and hold, continue climb-in-hold to 6000.</p>

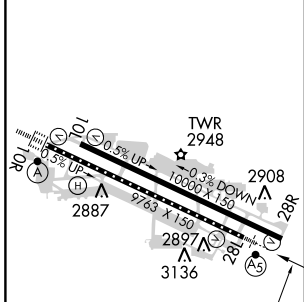
ATIS 123.9 290.4	BOISE APP CON 119.6 269.4	BOISE TOWER 118.1 257.8	GND CON 121.7 348.6	CLNC DEL 125.9 323.2
----------------------------	-------------------------------------	-----------------------------------	-------------------------------	--------------------------------



NW-1, 31 MAY 2012 to 28 JUN 2012

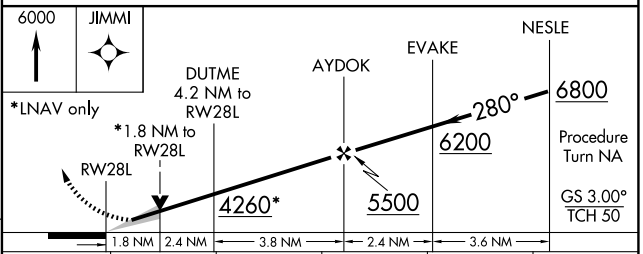
NW-1, 31 MAY 2012 to 28 JUN 2012

ELEV 2871	TDZE 2858
-----------	-----------



REIL Rwy 10L
TDZ/CL Rws 10R and 28L
HIRL Rws 10L-28R and 10R-28L

Procedure NA for arrivals at CANEK via V4-253-330 southeast bound.



	A	B	C	D	E
CATEGORY	A	B	C	D	E
LPV DA		3183/24		325 (400-½)	
LNAV/VNAV DA		3274/50		416 (500-1)	
LNAV MDA	3480/24	622 (700-½)	3480/60 622 (700-1¼)	3480-1½ 622 (700-1½)	3480-1¾ 622 (700-1¾)
CIRCLING	3480-1	609 (700-1)	3480-1¾ 609 (700-1¾)	3480-2 609 (700-2)	3860-3 989 (1000-3)

BOISE, IDAHO
Amdt 4 11349

43°34'N-116°13'W

BOISE AIR TERMINAL (GOWEN FIELD) (BOI)

RNAV (GPS) Y RWY 28L