

LOC/DME I-BOI <b>111.1</b> Chan 48	APP CRS <b>280°</b>	Rwy Idg TDZE <b>9763</b> <b>2858</b>	Apt Elev <b>2871</b>
--	------------------------	--	-------------------------

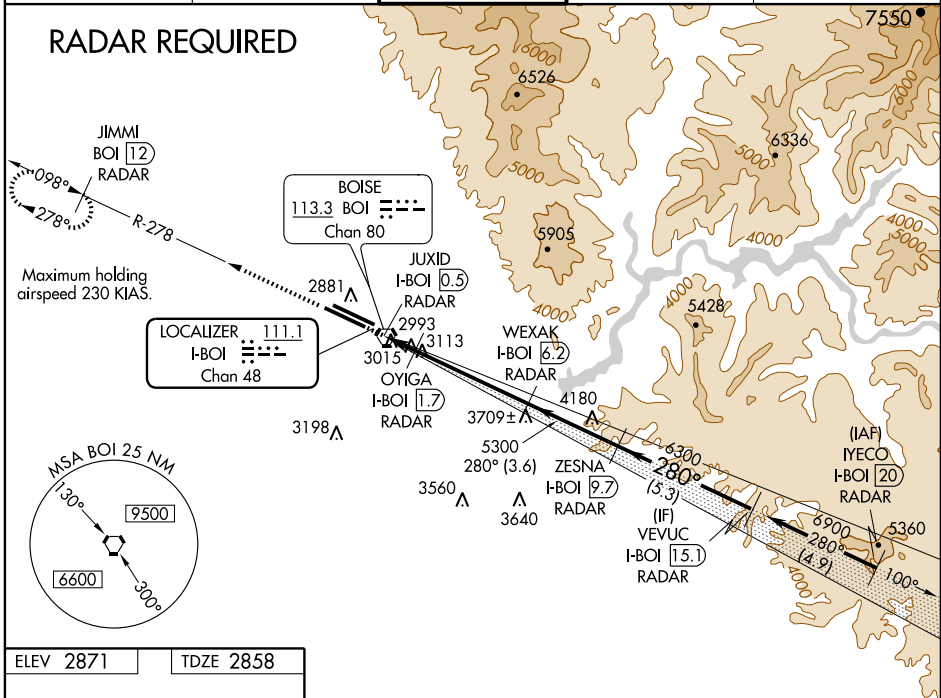
# LOC BC RWY 28L

BOISE AIR TERMINAL (GOWEN FIELD) (BOI)

<p><b>⚠</b> For inoperative MALSR, increase S-28L Cat. E visibility to 1½.  <b>⚠</b> Circling NA north of Rwy 10L-28R.                  DME or RADAR required.</p>	<p>MALSR  </p>	<p>MISSED APPROACH: Climb to 4500 via BOI VORTAC R-278 to JIMMI/12 DME/RADAR and hold.</p>
--	--------------------	--

ATIS <b>123.9 290.4</b>	BOISE APP CON <b>119.6 269.4</b>	<b>BOISE TOWER</b> <b>118.1 257.8</b>	GND CON <b>121.7 348.6</b>	CLNC DEL <b>125.9 323.2</b>
----------------------------	-------------------------------------	--	-------------------------------	--------------------------------

## RADAR REQUIRED

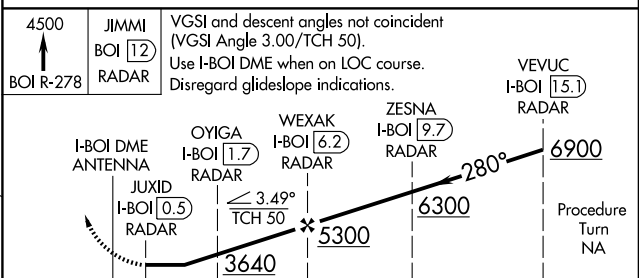
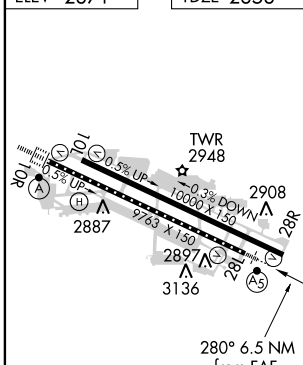


NW-1, 31 MAY 2012 to 28 JUN 2012

NW-1, 31 MAY 2012 to 28 JUN 2012

ELEV 2871	TDZE 2858
-----------	-----------

## BACK COURSE



REIL Rwy 10L  
 TDZ/CL Rwys 10R and 28L  
 HIRL Rwys 10L-28R and 10R-28L  
 FAF to MAP 5.7 NM

Knots	60	90	120	150	180
Min:Sec	5:42	3:48	2:51	2:17	1:54

	0.8	1.2 NM	4.5 NM	3.6 NM	5.3 NM	
CATEGORY	A	B	C	D	E	
S-28L	3300/24	442 (500-½)	3300/40 442 (500-¾)	3300/50	442 (500-1)	
CIRCLING	3440-1	569 (600-1)	3440-1½ 569 (600-1½)	3440-2	3860-3 989 (1000-3)	

BOISE, IDAHO  
 Amdt 1A 08APR10

43°34'N-116°13'W

BOISE AIR TERMINAL (GOWEN FIELD) (BOI)

# LOC BC RWY 28L