

APP CRS	Rwy Idg	7702
201°	TDZE	578
	Apt Elev	599

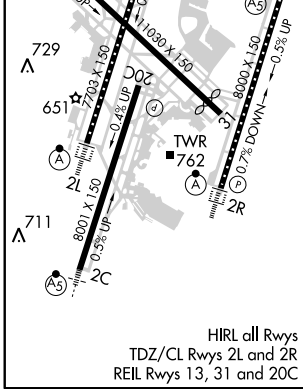
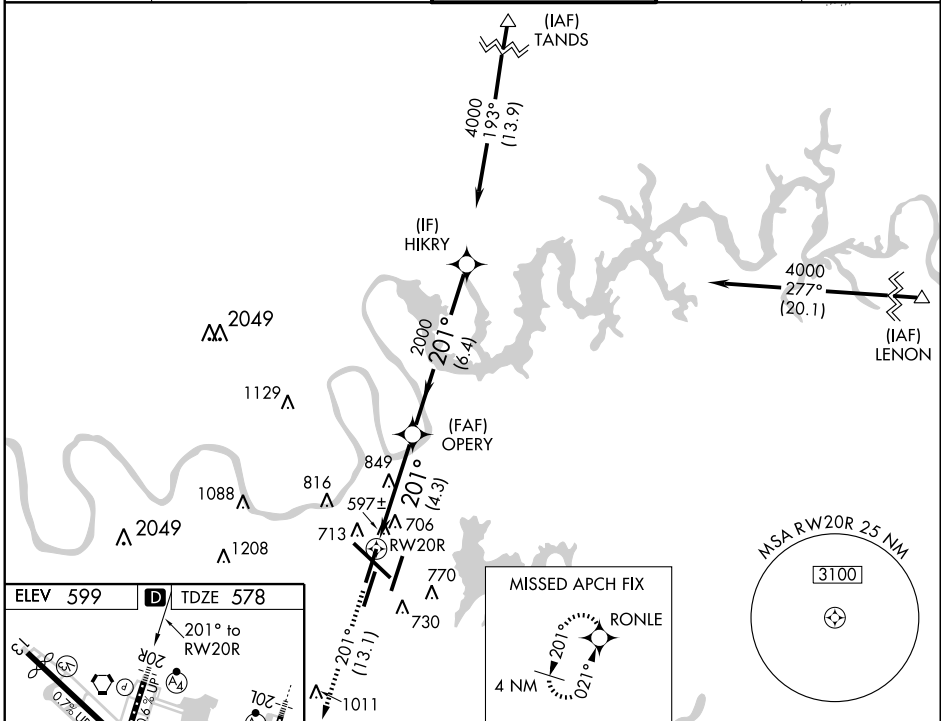
RNAV (RNP) Z RWY 20R

NASHVILLE INTL (BNA)

▼ GPS Required. For uncompensated Baro-VNAV systems, procedure NA below -12°C (11°F) or above 47°C (118°F). For inoperative MALSF, increase RNP 0.18 * visibility to RVR 6000 all Cats, RNP 0.30 visibility to 1½ all Cats. * RNP 0.18 missed approach requires minimum climb of 350 feet per NM to 1100. Simultaneous approach authorized with ILS or LOC Rwy 20L. Use of FD or AP providing RNAV track guidance required during simultaneous operations.

MALSF	MISSED APPROACH: Climb to 3000 via track 201° to RONLE and hold.
-------	---

ATIS	NASHVILLE APP CON	NASHVILLE TOWER	GND CON	CLNC DEL
135.1	200°-018° 120.6 372.0 019°-199° 127.175 360.7	118.6 257.8	121.9 348.6	126.05



3000	↑ tr 201°	RONLE	VGSI and RNAV glidepath not coincident (VGSI Angle 3.00/TCH 77).	HIKRY	Procedure Turn NA
		OPERY		2000	4000
		RWY 20R		2000	
				4.3 NM	6.4 NM

CATEGORY	A	B	C	D
RNP 0.18 DA		* 918/50	340 (400-1)	
RNP 0.30 DA		1022/60	444 (500-1½)	

AUTHORIZATION REQUIRED

SE-1, 31 MAY 2012 to 28 JUN 2012

SE-1, 31 MAY 2012 to 28 JUN 2012