


APP CRS	Rwy Idg	8000
201°	TDZE	551
	Apt Elev	599

RNAV (RNP) Z RWY 20L

NASHVILLE INTL (BNA)

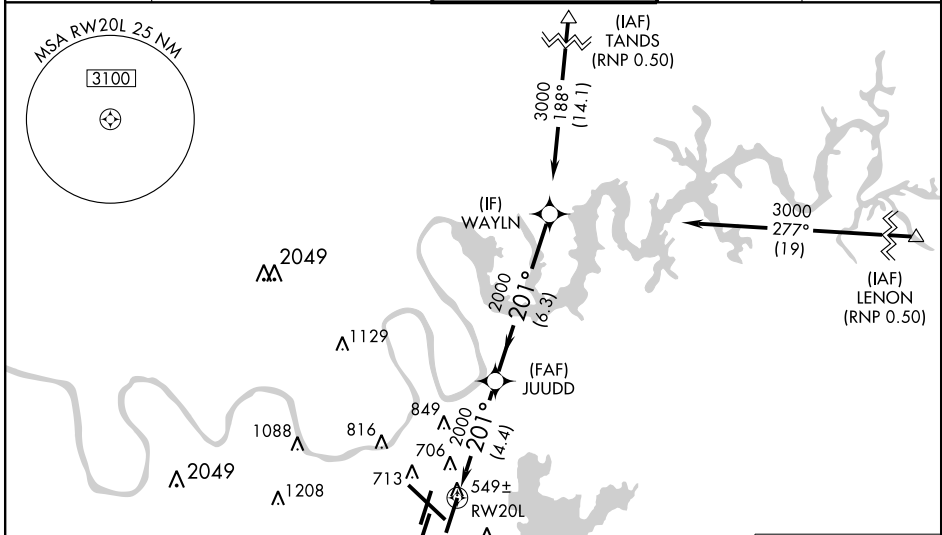
GPS Required. For uncompensated Baro-VNAV systems, procedure NA below -12°C (11°F) or above 47°C (117°F). For inoperative MALS/R, increase RNP 0.20 visibility to RVR 6000 all Cats, RNP 0.30 visibility to 1½ all Cats. Visibility reduction by helicopters NA.
 * RNP 0.20 missed approach requires minimum climb of 365 feet per NM to 1100.
 Simultaneous approach authorized with ILS or LOC Rwy 20R.
 Use of FD or AP providing RNAV track guidance required during simultaneous operations.

MALS/R



MISSED APPROACH:
 Climb to 3000 via track 201° to ATKNS and hold.

ATIS 135.1	NASHVILLE APP CON 200°-018° 120.6 372.0 019°-199° 127.175 360.7	NASHVILLE TOWER 118.6 257.8	GND CON 121.9 348.6	CLNC DEL 126.05
-----------------------------	--	---	---	----------------------------------



SE-1, 31 MAY 2012 to 28 JUN 2012

SE-1, 31 MAY 2012 to 28 JUN 2012

ELEV 599 **D** **TDZE 551**

201° to RWY 20L

729, 651, 711, 200, 201, 202, 203, 204, 205, 206, 207, 208, 209, 210, 211, 212, 213, 214, 215, 216, 217, 218, 219, 220, 221, 222, 223, 224, 225, 226, 227, 228, 229, 230, 231, 232, 233, 234, 235, 236, 237, 238, 239, 240, 241, 242, 243, 244, 245, 246, 247, 248, 249, 250, 251, 252, 253, 254, 255, 256, 257, 258, 259, 260, 261, 262, 263, 264, 265, 266, 267, 268, 269, 270, 271, 272, 273, 274, 275, 276, 277, 278, 279, 280, 281, 282, 283, 284, 285, 286, 287, 288, 289, 290, 291, 292, 293, 294, 295, 296, 297, 298, 299, 300.

3000 **tr 201°** **ATKNS** **VGSI and RNAV glidepath not coincident.** **WAYLN** **Procedure Turn NA**

JUDD **2000** **3000** **201°** **2000**

RWY 20L **4.4 NM** **6.3 NM**

GP 3.00° TCH 47'

CATEGORY	A	B	C	D
RNP 0.20 DA		* 901/40	350 (400-¾)	
RNP 0.30 DA		1011/60	460 (500-1¼)	

AUTHORIZATION REQUIRED