

APP CRS	Rwy Idg	8000
021°	TDZE	590
	Apt Elev	599

RNAV (RNP) Z RWY 2R

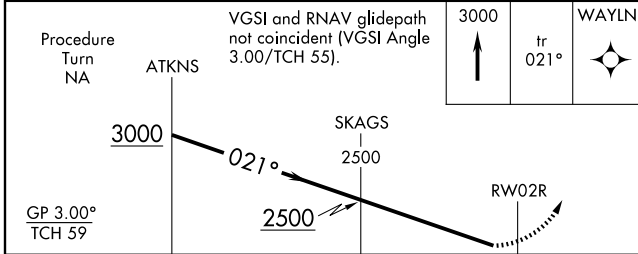
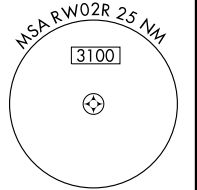
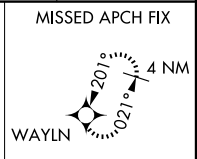
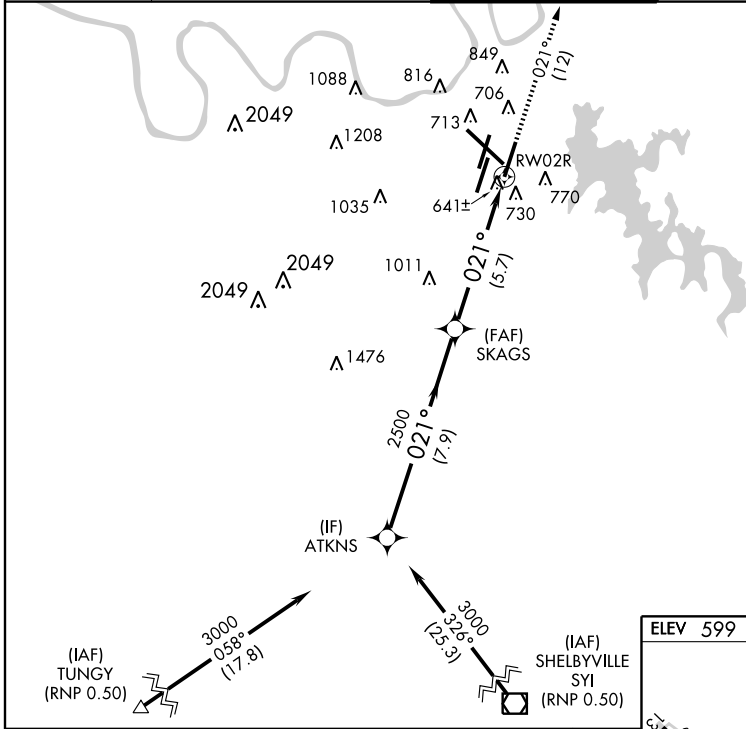
NASHVILLE INTL (BNA)

▼ For uncompensated Baro-VNAV systems, procedure NA below -12°C (11°F) or above 47°C (118°F). For inoperative ALSF, increase RNP 0.30 visibility to 1/2 all Cats. When VGSI inop, procedure NA at night. GPS required. Simultaneous approach authorized with ILS or LOC Rwy 2L, ILS Rwy 2L (Cat II), ILS Rwy 2L (Cat III). Use of FD or AP providing RNAV track guidance required during simultaneous operations.



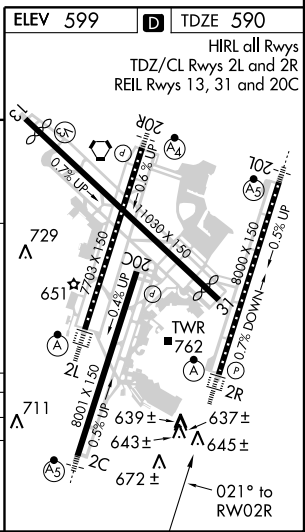
MISSED APPROACH:
Climb to 3000 via track 021° to WAYLN and hold.

ATIS	NASHVILLE APP CON	NASHVILLE TOWER	GND CON	CLNC DEL
135.1	200°-018° 120.6 372.0 019°-199° 127.175 360.7	118.6 257.8	121.9 348.6	126.05



CATEGORY	A	B	C	D
RNP 0.30 DA		1026/50	436 (500-1)	

AUTHORIZATION REQUIRED



SE-1, 31 MAY 2012 to 28 JUN 2012

SE-1, 31 MAY 2012 to 28 JUN 2012