


APP CRS	Rwy Idg	<b>7702</b>
<b>021°</b>	TDZE	<b>599</b>
	Apt Elev	<b>599</b>

# RNAV (RNP) Z RWY 2L

NASHVILLE INTL (BNA)

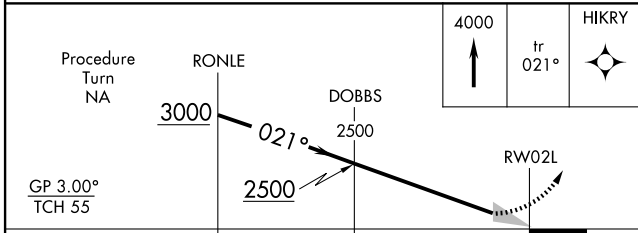
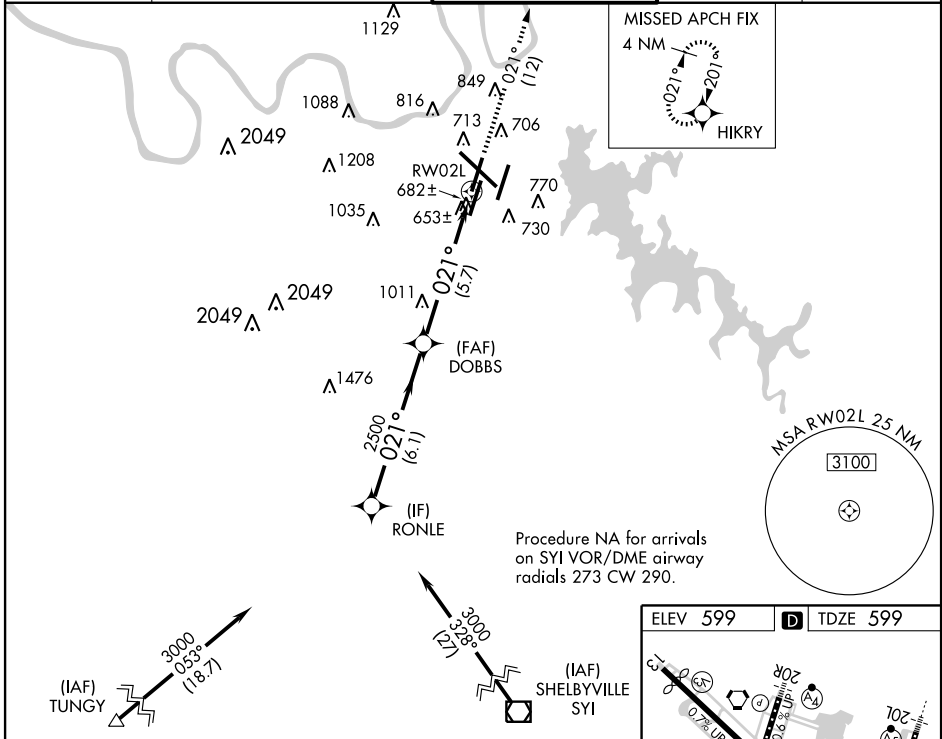
**▼** GPS Required. For uncompensated Baro-VNAV systems, procedure NA below -12°C (11°F) or above 47°C (117°F). For inoperative ALSF, increase RNP 0.20 visibility to RVR 5000 all Cats, RNP 0.30 visibility to 1½ all Cats. Simultaneous approach authorized with ILS or LOC Rwy 2R, ILS Rwy 2R (Cat II), ILS Rwy 2R (Cat III). Use of FD or AP providing RNAV track guidance required during simultaneous operations.

**ALSF-2**



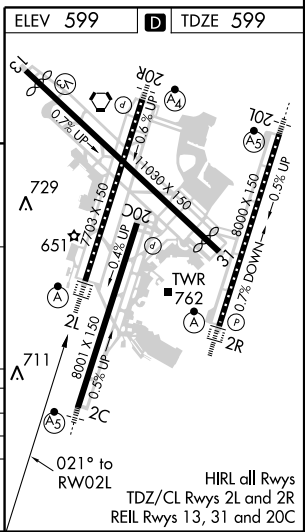
**MISSED APPROACH:** Climb to 4000 via track 021° to HIKRY and hold, continue climb-in-hold to 4000.

ATIS	NASHVILLE APP CON	NASHVILLE TOWER	GND CON	CLNC DEL
<b>135.1</b>	200°-018° <b>120.6</b> 372.0 019°-199° <b>127.175</b> 360.7	<b>118.6</b> 257.8	<b>121.9</b> 348.6	<b>126.05</b>



CATEGORY	A	B	C	D
RNP 0.20 DA		927/24	328 (400-½)	
RNP 0.30 DA		1009/40	410 (500-¾)	

**AUTHORIZATION REQUIRED**



SE-1, 31 MAY 2012 to 28 JUN 2012

SE-1, 31 MAY 2012 to 28 JUN 2012