

# RNAV (GPS) RWY 13

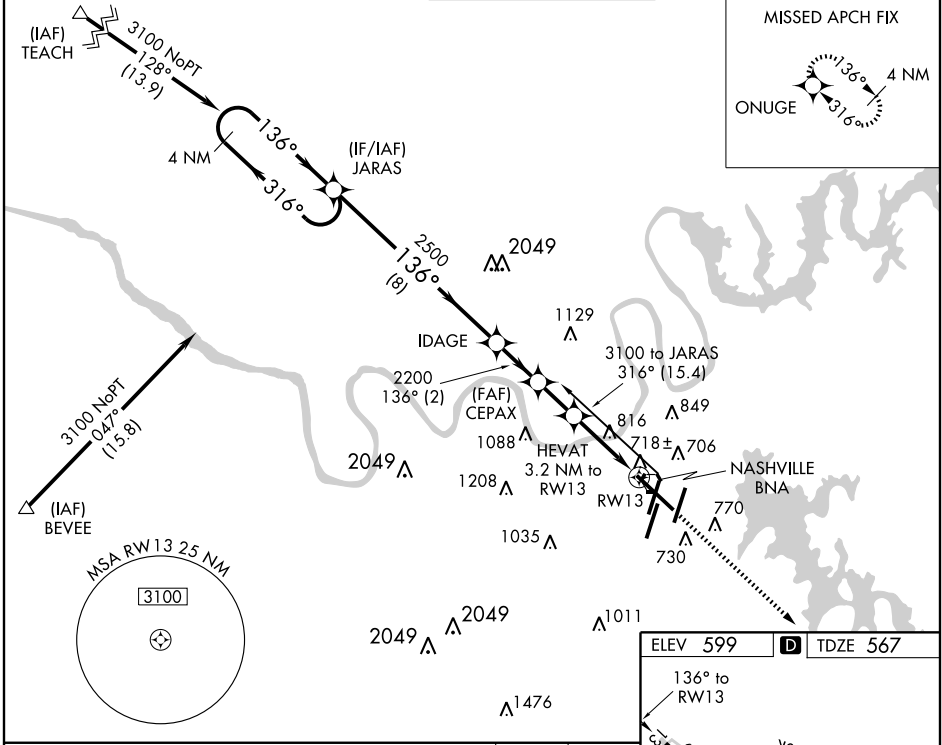
NASHVILLE INTL (BNA)

APP CRS	Rwy Idg	<b>9487</b>
<b>136°</b>	TDZE	<b>567</b>
	Apt Elev	<b>599</b>

▼ For uncompensated Baro-VNAV systems, LNAV/VNAV NA below -16°C (4°F) or above 47°C (116°F). DME/DME RNP-0.3 NA.

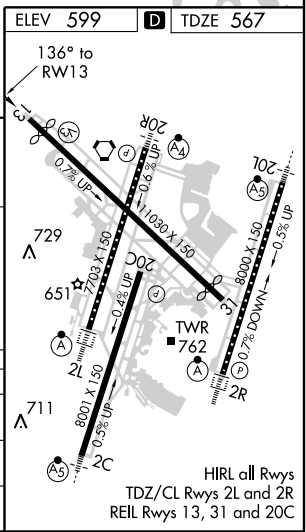
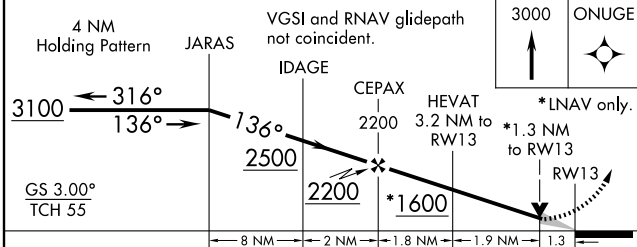
MISSED APPROACH: Climb to 3000 direct ONUGE and hold.

ATIS	NASHVILLE APP CON	NASHVILLE TOWER	GND CON	CLNC DEL
<b>135.1</b>	200°-018° <b>120.6 372.0</b> 019°-199° <b>127.175 360.7</b>	<b>118.6 257.8</b>	<b>121.9 348.6</b>	<b>126.05</b>



SE-1, 31 MAY 2012 to 28 JUN 2012

SE-1, 31 MAY 2012 to 28 JUN 2012



CATEGORY	A	B	C	D
LNAV/ VNAV	968-1½ 401 (400-1½)			
LNAV MDA	1080-1	513 (500-1)	1080-1½ 513 (500-1½)	1080-1¾ 513 (500-1¾)
CIRCLING	1100-1	501 (600-1)	1120-1½ 521 (600-1½)	1160-2 561 (600-2)

HIRL all Rwys  
TDZ/CL Rwys 2L and 2R  
REIL Rwys 13, 31 and 20C