


LOC I-VII 111.3	APP CRS 201°	Rwy Idg	20R	20C
		TDZE	7702	8000
			578	588
		Apt Elev	599	599

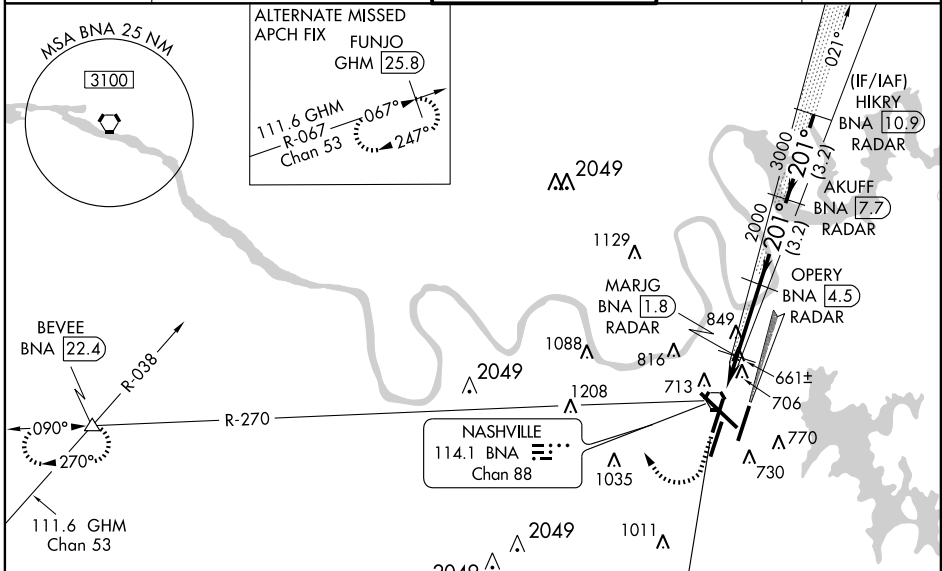
ILS or LOC RWY 20R

NASHVILLE INTL (BNA)

Simultaneous approach authorized with Rwy 20L. DME or radar required.

MALSF  MISSED APPROACH: Climb to 1200 then climbing right turn to 4000 via heading 300° and BNA VORTAC R-270 to BEVEE INT/BNA VORTAC 22.4 DME and hold.

ATIS 135.1	NASHVILLE APP CON 200°-018° 120.6 372.0 019°-199° 127.175 360.7	NASHVILLE TOWER 118.6 257.8	GND CON 121.9 348.6	CLNC DEL 126.05
----------------------	---	--	--------------------------------------	---------------------------

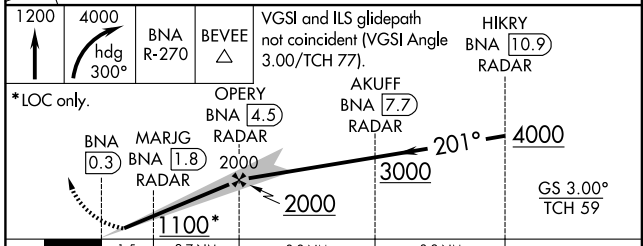
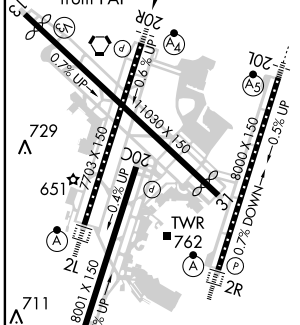


SE-1, 31 MAY 2012 to 28 JUN 2012

SE-1, 31 MAY 2012 to 28 JUN 2012

RADAR REQUIRED

ELEV 599	TDZE 20C 588	FUNJO GHM (25.8)	R-067 GHM 111.6 Chan 53 (1476)
201° 4.3 NM from FAF	TDZE 20R 578		



CATEGORY	A	B	C	D
S-ILS 20R	778/40 200 (200-¾)			
S-LOC 20R	920/40	342 (400-¾)		920/60 342 (400-1¼)
SIDESTEP 20C	960-1	372 (400-1)	960-1½ 372 (400-1½)	960-2 372 (400-2)
CIRCLING	1100-1	501 (600-1)	1120-1½ 521 (600-1½)	1160-2 561 (600-2)