

LOC/DME I-UQU <b>111.75</b> Chan <b>54 (Y)</b>	APP CRS <b>021°</b>	Rwy Idg TDZE Apt Elev	<b>8000</b> <b>590</b> <b>599</b>
--	------------------------	-----------------------------	---

# ILS or LOC RWY 2R

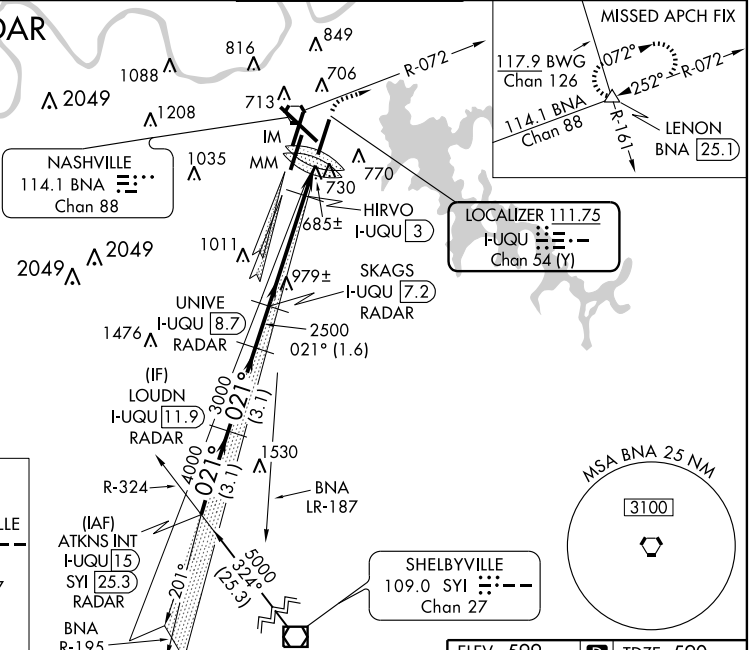
NASHVILLE INTL (BNA)

**Simultaneous approach authorized with Rwy 2C or 2L.**  
DME or radar required.

**MISSED APPROACH:** Climb to 1300 then climbing right turn to 3000 via BNA R-072 to LENON INT/BNA 25.1 DME and hold.

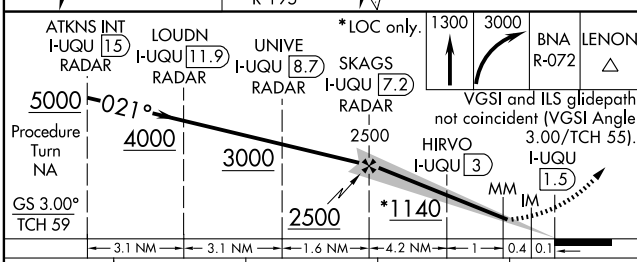
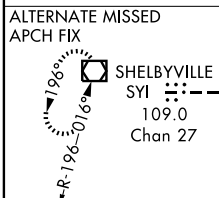
ATIS <b>135.1</b>	NASHVILLE APP CON 200°-018° <b>120.6 372.0</b> 019°-199° <b>127.175 360.7</b>	NASHVILLE TOWER <b>118.6 257.8</b>	GND CON <b>121.9 348.6</b>	CLNC DEL <b>126.05</b>
----------------------	---	---------------------------------------	-------------------------------	---------------------------

## DME or RADAR REQUIRED

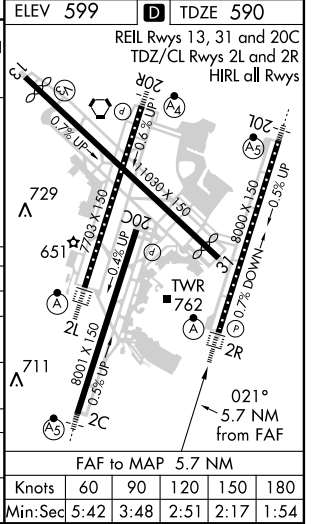


SE-1, 31 MAY 2012 to 28 JUN 2012

SE-1, 31 MAY 2012 to 28 JUN 2012



CATEGORY	A	B	C	D
S-ILS 2R	790/18 200 (200-½)			
S-LOC 2R	1140/24 550 (600-½)	1140/50 550 (600-1)	1140/60 550 (600-1¼)	
CIRCLING	1140-1 541 (600-1)	1140-1½ 541 (600-1½)	1160-2 561 (600-2)	
HIRVO FIX MINIMUMS				
S-LOC 2R	1080/24 490 (500-½)	1080/40 490 (500-¾)	1080/50 490 (500-1)	
CIRCLING	1100-1 501 (600-1)	1120-1½ 521 (600-1½)	1160-2 561 (600-2)	



FAF to MAP 5.7 NM					
Knots	60	90	120	150	180
Min:Sec	5:42	3:48	2:51	2:17	1:54