

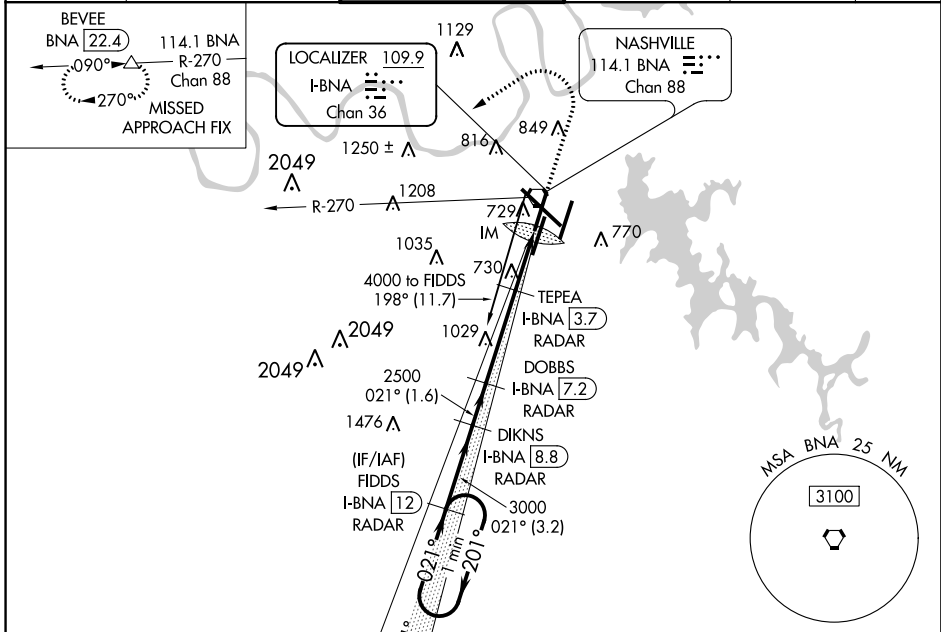
LOC/DME I-BNA <b>109.9</b> Chan 36	APP CRS <b>021°</b>	Rwy Idg TDZE Apt Elev	<b>7702</b> <b>599</b> <b>599</b>
--	------------------------	-----------------------------	---

# ILS or LOC RWY 2L

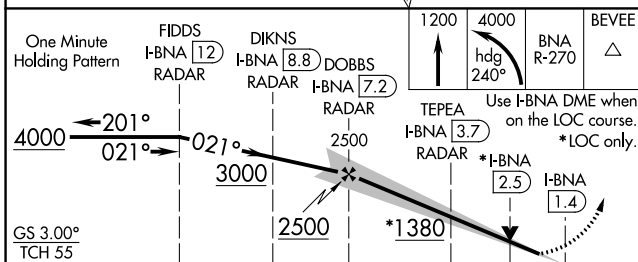
NASHVILLE INTL (BNA)

⚠ Simultaneous approach authorized with Rwy 2R. DME or radar required.
 ALSIF-2
MISSED APPROACH: Climb to 1200 then climbing left turn to 4000 on heading 240° and on BNA VORTAC R-270 to BEVEE/BNA VORTAC 22.4 DME and hold.

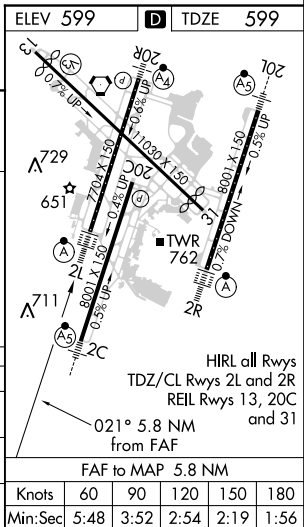
D-ATIS <b>135.1</b>	NASHVILLE APP CON <b>118.4 360.7</b>	NASHVILLE TOWER <b>118.6 257.8</b>	GND CON <b>121.9 348.6</b>	CLNC DEL <b>126.05</b>	CPDLC
------------------------	---	---------------------------------------	-------------------------------	---------------------------	-------



## DME or RADAR REQUIRED



CATEGORY	A	B	C	D
S-ILS 2L	799/18		200 (200-½)	
S-LOC 2L	980/24	381 (400-½)	980/35	381 (400-¾)
CIRCLING	1100-1 501 (600-1)	1120-1 521 (600-1)	1200-1¾ 601 (700-1¾)	1380-2½ 781 (800-2½)



# NASHVILLE INTL (BNA)

## ILS or LOC RWY 2L

SE-1, 14 SEP 2017 to 12 OCT 2017

SE-1, 14 SEP 2017 to 12 OCT 2017