

LOC I-EZN 110.75	APP CRS 021°	Rwy Idg TDZE Apt Elev 8000 587 599
----------------------------	------------------------	--

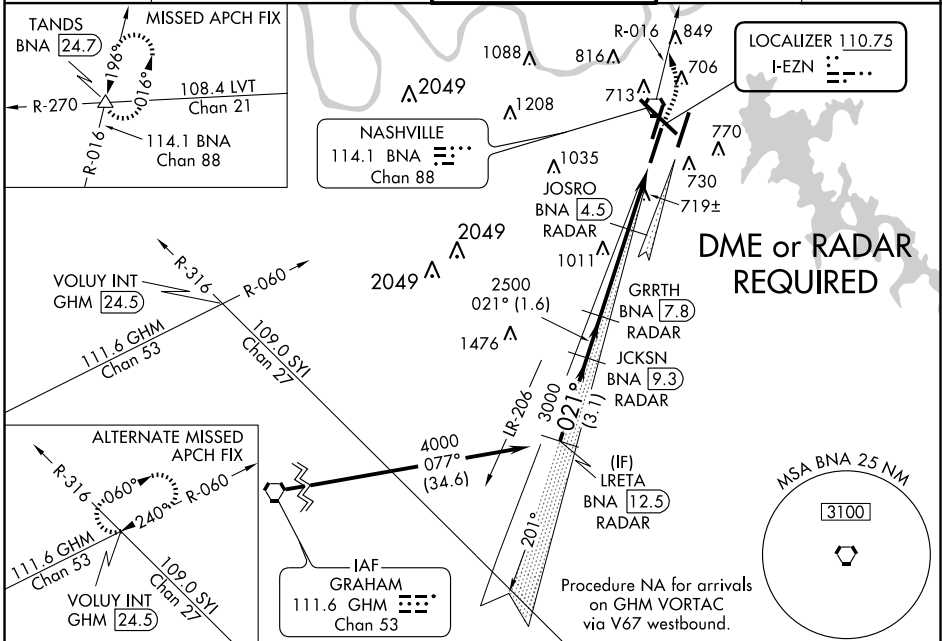
ILS or LOC RWY 2C

NASHVILLE INTL (BNA)

▼ For inoperative MALSRR, increase S-LOC 2C Cat A visibility to RVR 5000.
▲ Simultaneous approach authorized with ILS or LOC Rwy 2R, ILS Rwy 2R (Cat II), ILS Rwy 2R (Cat III). DME or radar required.
 ** RVR 1800 authorized with the use of FD or AP or HUD to DA.

MALSRR MISSED APPROACH: Climb to 1300 then climbing left turn to 3000 via BNA VORTAC R-016 to TANDS INT/BNA 24.7 DME and hold.

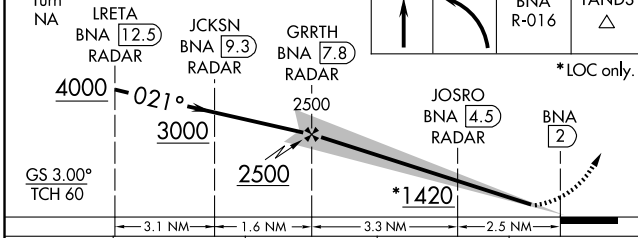
ATIS 135.1	NASHVILLE APP CON 200°-018° 120.6 372.0 019°-199° 127.175 360.7	NASHVILLE TOWER 118.6 257.8	GND CON 121.9 348.6	CLNC DEL 126.05
----------------------	---	--	--------------------------------------	---------------------------



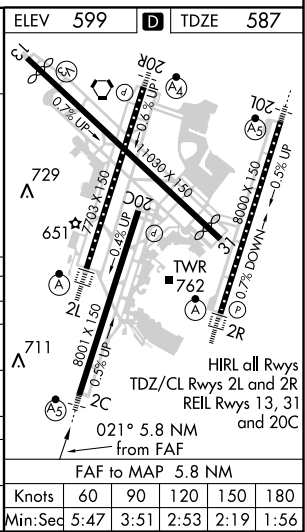
SE-1, 31 MAY 2012 to 28 JUN 2012

SE-1, 31 MAY 2012 to 28 JUN 2012

Procedure VGSI and ILS glidepath not coincident. Turn NA LRETA BNA (12.5) RADAR, JCKSN BNA (9.3) RADAR, GRRTH BNA (7.8) RADAR, JOSRO BNA (4.5) RADAR, BNA (2) RADAR. *LOC only.



CATEGORY	A	B	C	D
S-ILS 2C	** 787/24 200 (200-½)			
S-LOC 2C	1420/40	833 (900-¾)	1420-2	1420-2¼
CIRCLING	1420-1	1420-1¼	1420-2½	1420-2¾
	821 (900-1)	821 (900-1¼)	821 (900-2½)	821 (900-2¾)
JOSRO FIX MINIMUMS				
S-LOC 2C	980/24 393 (400-½)		980/40 393 (400-¾)	
CIRCLING	1100-1 501 (600-1)		1120-1½ 521 (600-1½)	
			1160-2 561 (600-2)	



ELEV 599	TDZE 587
Knots	60 90 120 150 180
Min:Seq	5:47 3:51 2:53 2:19 1:56