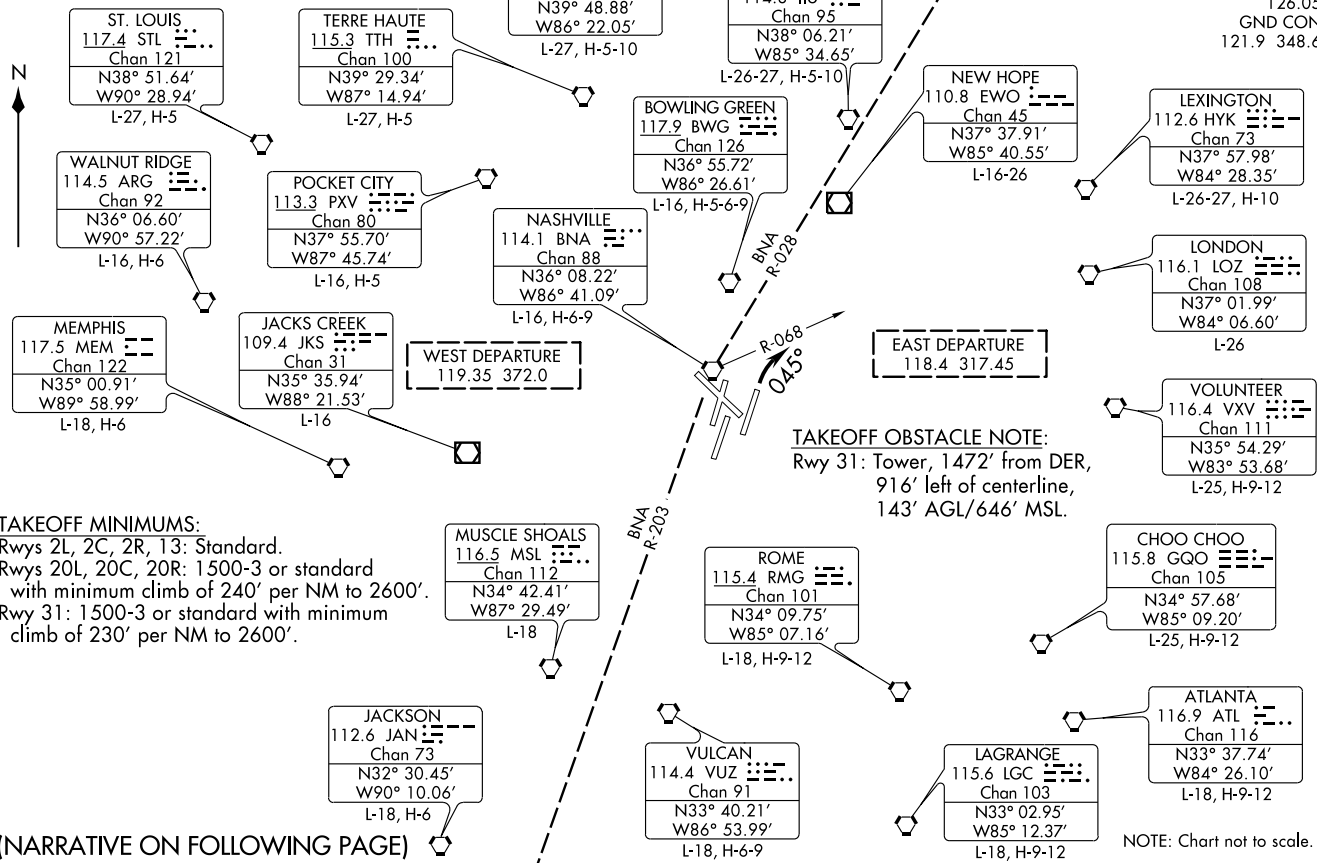


NOTE: Use frequency depicted within the sector where Fix/Navaid for your route is located.

ATIS 135.1
CLNC DEL 126.05
GND CON 121.9 348.6



(NARRATIVE ON FOLLOWING PAGE)

TITAN ONE DEPARTURE (OBSTACLE)



DEPARTURE ROUTE DESCRIPTION

All aircraft cleared as filed.

TAKE-OFF RUNWAY 2R: Turn right heading 045° to intercept BNA R-068, thence....

TAKE-OFF ALL RUNWAYS EXCEPT RUNWAY 2R: Fly runway heading, thence....

....Expect radar vectors to filed/assigned route. Turbojet aircraft climb and maintain 5000 feet, Propeller aircraft climb and maintain 4000 feet or assigned lower altitude. Expect clearance to filed altitude/flight level ten minutes after departure.

SE-1, 31 MAY 2012 to 28 JUN 2012

SE-1, 31 MAY 2012 to 28 JUN 2012