

LOC/DME I-BLI <b>108.5</b> Chan 22	APP CRS <b>164°</b>	Rwy Idg TDZE Apt Elev	<b>6701</b> <b>163</b> <b>170</b>
--	------------------------	-----------------------------	---

# ILS RWY 16 (SA CAT I)

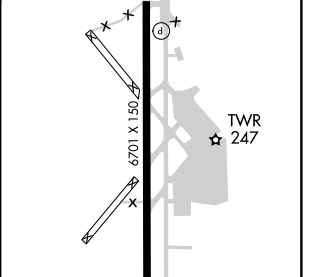
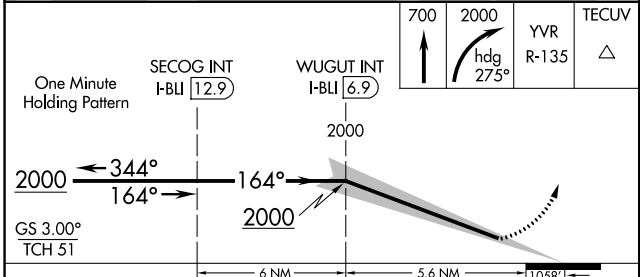
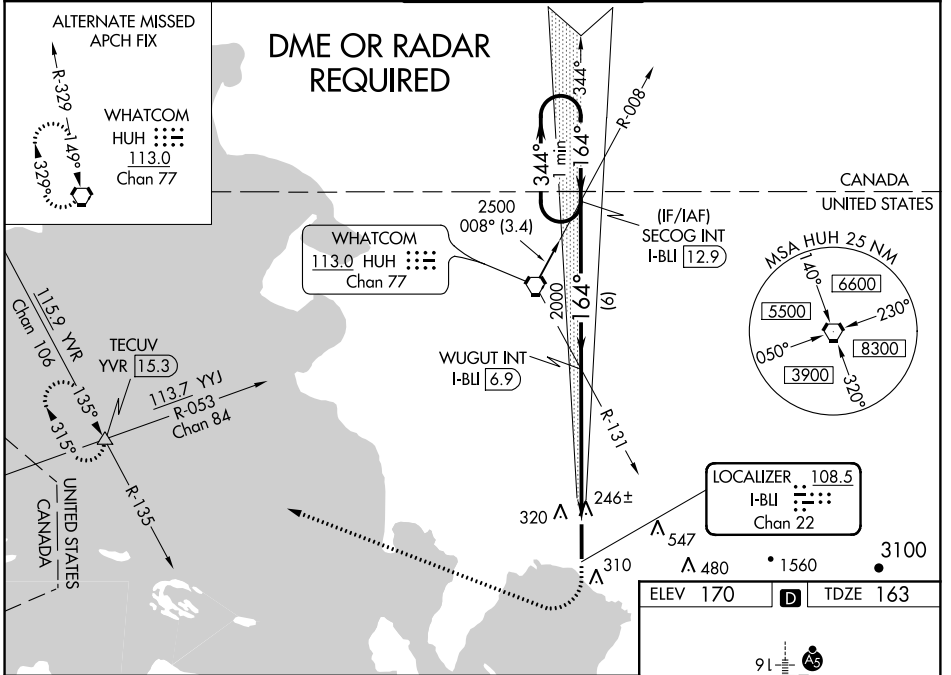
BELLINGHAM INTL (BLI)

**⚠** Requires specific OPSPEC, MSPEC or LOA approval and use of HUD to DH.

**MALSR**

**MISSED APPROACH:** Climb to 700 then climbing right turn to 2000 on heading 275° and on YVR VOR/DME R-135 to TECUV INT/YVR 15.3 DME and hold.

ATIS <b>134.45</b>	VICTORIA TERMINAL APP CON <b>132.7 290.8</b>	BELLINGHAM TOWER ★ <b>124.9 (CTAF) 0 379.3</b>	GND CON <b>127.4 379.3</b>	UNICOM <b>122.95</b>
-----------------------	---	---	-------------------------------	-------------------------



CATEGORY	A	B	C	D
S-ILS 16	RA 244/14 150 DA 313			

**SA CATEGORY I ILS-SPECIAL AIRCREW & AIRCRAFT CERTIFICATION REQUIRED**

REIL Rwy 34

HIRL Rwy 16-34

NW-1, 12 OCT 2017 to 09 NOV 2017

NW-1, 12 OCT 2017 to 09 NOV 2017