

LOC/DME I-BXO <b>111.3</b> Chan <b>50</b>	APP CRS <b>183°</b>	Rwy Idg THRE Apt Elev <b>7100</b> <b>644</b> <b>650</b>
---	------------------------	--

# LOC RWY 18

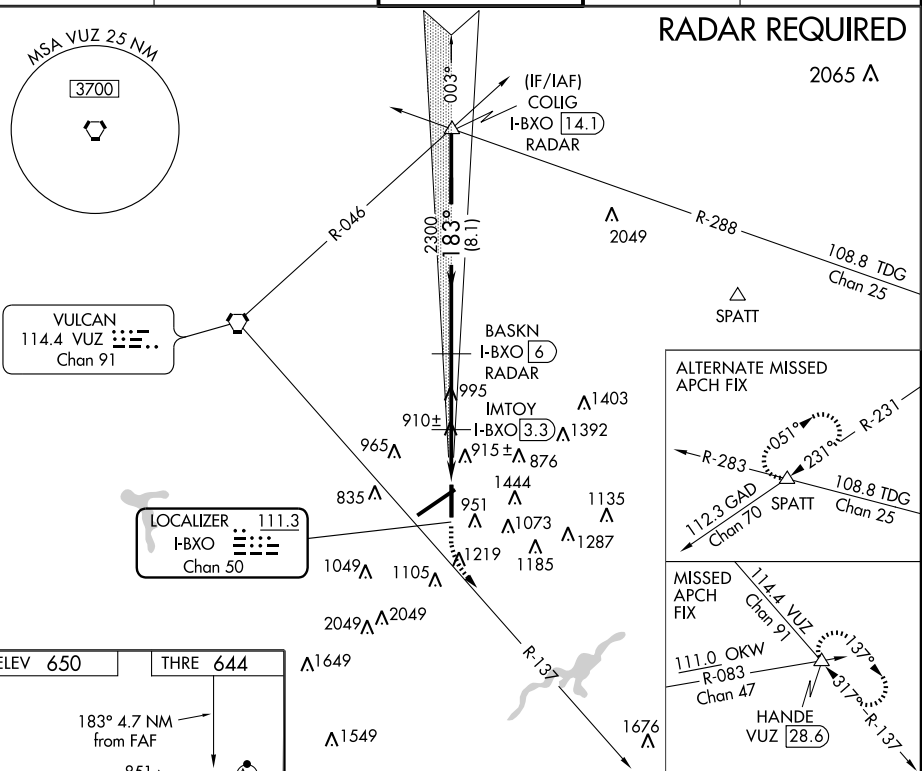
BIRMINGHAM-SHUTTLESWORTH INTL (BHM)

**▽** DME or Radar required.  
Visibility reduction by helicopters NA.  
When VGSI inop, procedure NA at night.

MISSED APPROACH: Climb to 1500 on heading 183° then climbing left turn to 3800 on VUZ VORTAC R-137 to HANDE INT/VUZ 28.6 DME and hold.

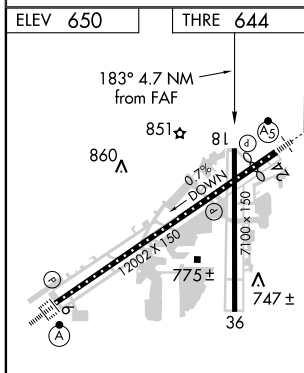
ATIS <b>119.4 270.1</b>	BIRMINGHAM APP CON <b>123.8 256.8</b>	BIRMINGHAM TOWER <b>119.9 317.725</b>	GND CON <b>121.7 348.6</b>	CLNC DEL <b>125.675 305.2</b>
----------------------------	--	--	-------------------------------	----------------------------------

## RADAR REQUIRED



SE-4, 31 MAY 2012 to 28 JUN 2012

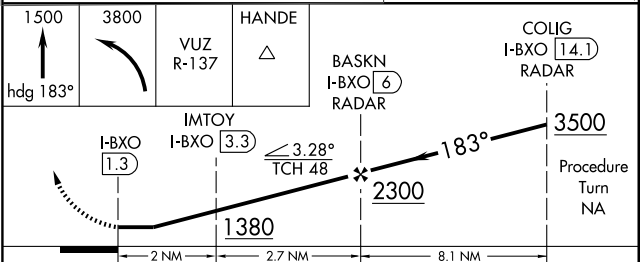
SE-4, 31 MAY 2012 to 28 JUN 2012



REIL Rwy 18-36  
TDZ/CL Rwy 6  
HIRL Rwy 6-24  
MIRL Rwy 18-36

FAF to MAP 4.7 NM

Knots	60	90	120	150	180
Min:Sec	4:42	3:08	2:21	1:53	1:34



CATEGORY	A	B	C	D
S-18	1380-1	736 (800-1)	1380-2	736 (800-2)
IMTOY FIX MINIMUMS				
S-18	1200-1	556 (600-1)	1200-1½	556 (600-1½)