

BANGOR, MAINE

HI-VOR/DME or TACAN RWY 33

VORTAC BGR 114.8 Chan 95	APCH CRS 335°	Rwy Idg 11,440 TDZE 163 Arprt Elev 192
--	-------------------------	---

JAL-39 [USAF]

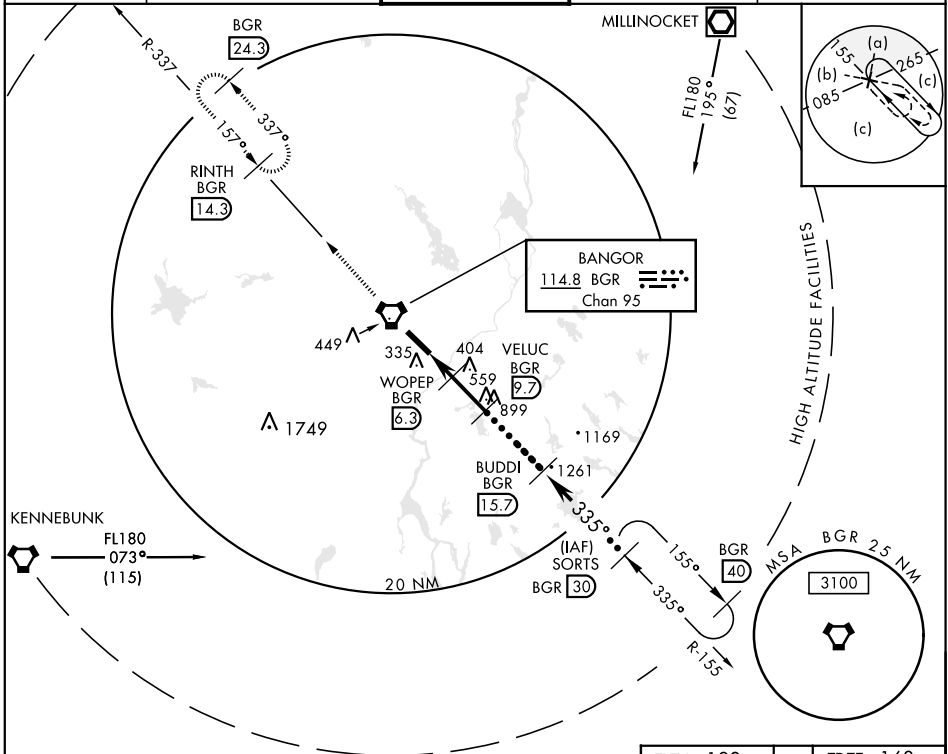
BANGOR INTL (KBGR)

▼ * When ALS inop, increase CAT C RVR to 60 and vis to 1½ miles, CAT D/E vis to 1½ miles.
** Circling not authorized NE of Rwy 15-33.



MISSED APPROACH: Climb to 3000 direct BGR VORTAC then via BGR R-337 to RINTH (BGR 14.3 DME) and hold.

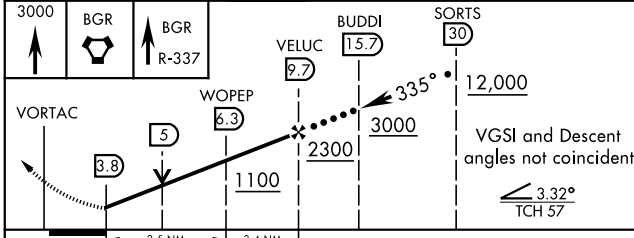
ATIS 127.75	BANGOR APP CON 118.925 239.3	BANGOR TOWER 120.7 233.7	GND CON 121.9 348.6	ASR
-----------------------	--	------------------------------------	-------------------------------	-----



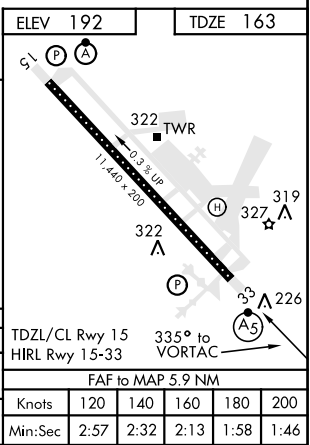
NE-1, 27 APR 2017 to 25 MAY 2017

NE-1, 27 APR 2017 to 25 MAY 2017

EMERG SAFE ALT 100 NM 7500



CATEGORY	C	D	E
S-33 *	600/40 437 (500-¾)	600/50	437 (500-1)
CIRCLING **	660-1½ 468 (500-1½)	760-2	568 (600-2)



BANGOR, MAINE
Amdt 4 14261

44°48'N-68°50'W

BANGOR INTL (KBGR)

HI-VOR/DME or TACAN RWY 33