

WAAS CH 66015 W16A	APP CRS 160°	Rwy Idg 6905 TDZE 1634 Apt Elev 1636
--	------------------------	---

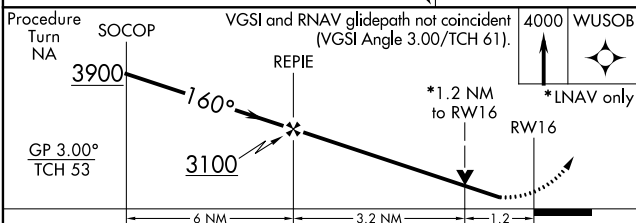
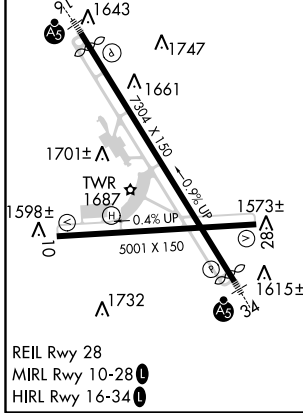
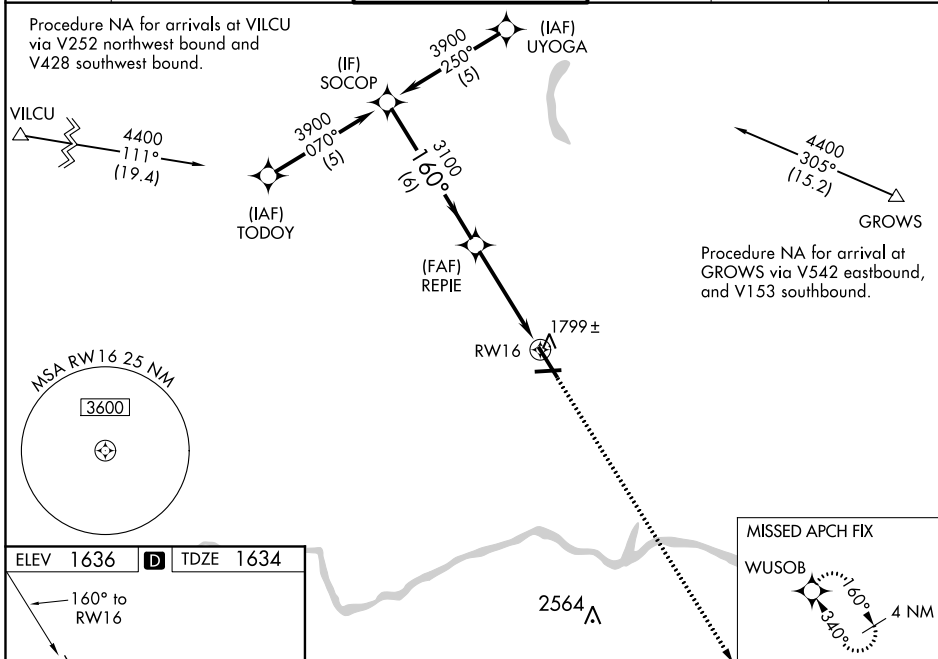
RNAV (GPS) RWY 16

GREATER BINGHAMTON/EDWIN A. LINK FIELD (BGM)

⚠ When VGSI inoperative, Circling Rwy 34 NA at night. Inoperative table does not apply to LPV all Cats. For uncompensated Baro-VNAV systems, LNAV/VNAV NA below -18°C (0°F) or above 45°C (113°F). DME/DME RNP-0.3 NA. Visibility reduction by helicopters NA. When local altimeter setting not received, use Ithaca altimeter setting and increase all DA 138 feet and all MDA 140 feet and increase LNAV/VNAV all Cats visibility ½ mile and LNAV and Circling Cats C and D visibility ¼ mile. For inoperative MALSR increase LNAV Cats A, C and D visibility ¼ mile. For inoperative MALSR when using Ithaca altimeter setting increase LPV all Cats visibility ½ mile, LNAV Cats A and B visibility ¼ mile. Baro-VNAV and VDP NA when using Ithaca altimeter setting.

MALSR MISSED APPROACH: Climb to 4000 direct WUSOB and hold.

ATIS 128.15	BINGHAMTON APP CON * 118.6 257.625	BINGHAMTON TOWER * 119.3 (CTAF) 0 239.25	GND CON 121.9	CLNC DEL 125.05	UNICOM 122.95
-----------------------	--	--	-------------------------	---------------------------	-------------------------



CATEGORY	A	B	C	D
LPV DA	1884-¾ 250 (300-¾)			
LNAV/ VNAV DA	1984-¾ 350 (400-¾)			
LNAV MDA	2060-¾ 426 (500-¾)		2060-1 426 (500-1)	
CIRCLING	2120-1 484 (500-1)		2120-1½ 564 (600-2)	

NE-2, 09 NOV 2017 to 07 DEC 2017

NE-2, 09 NOV 2017 to 07 DEC 2017