

LOC I-BGM 110.3	APP CRS 340°	Rwy Idg THRE Apt Elev	7099 1570 1636
---------------------------	------------------------	-----------------------------	---

ILS or LOC RWY 34

GREATER BINGHAMTON/EDWIN A. LINK FIELD (BGM)

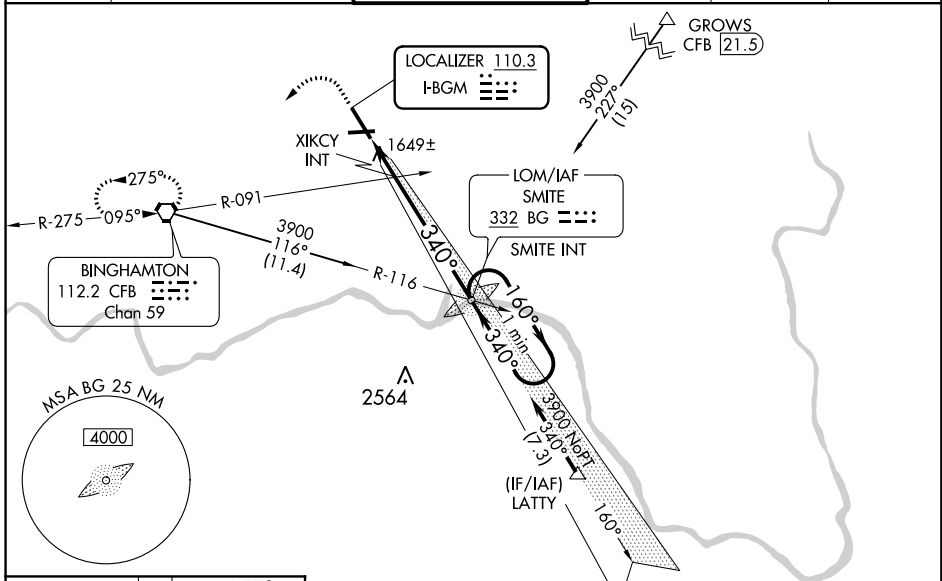
⚠ When local altimeter setting not received, use Ithaca altimeter setting: increase S-ILS 34 DA to 1908 and all Cats visibility 1/8 mile; increase all MDA 140 feet and S-LOC 34 Cats C/D visibility 3/8 mile and Circling Cats C/D visibility 1/4 mile; increase XIKCY fix minimums S-LOC 34 Cats C/D visibility 1/4 mile. For inoperative MALSR increase S-LOC 34 Cats C/D visibility to 1 3/8 mile and XIKCY fix minimums S-LOC 34 Cats C/D visibility to RVR 5000. For inoperative MALSR when using Ithaca altimeter setting, increase S-ILS 34 all Cats visibility to RVR 6000, S-LOC 34 Cats C/D visibility to 1 3/4, and XIKCY fix minimums S-LOC 34 Cats C/D visibility to 1 3/8 mile.

MALSR

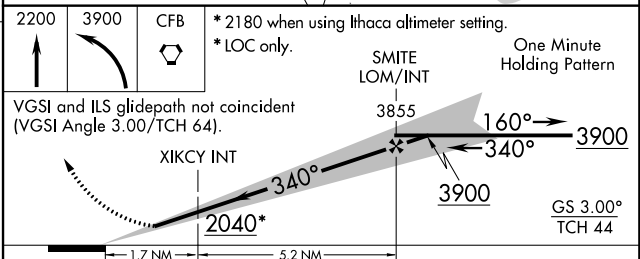
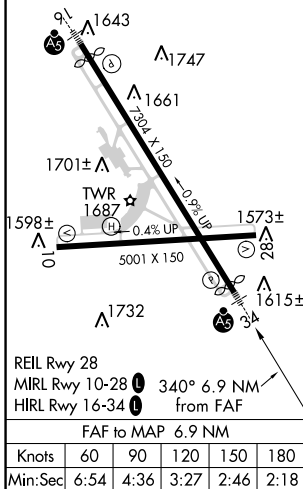


MISSED APPROACH:
Climb to 2200 then climbing left turn to 3900 direct CFB VORTAC and hold, continue climb-in-hold to 3900.

ATIS 128.15	BINGHAMTON APP CON * 118.6 257.625	BINGHAMTON TOWER * 119.3 (CTAF) 239.25	GND CON 121.9	CLNC DEL 125.05	UNICOM 122.95
-----------------------	--	--	-------------------------	---------------------------	-------------------------



ELEV 1636	D	THRE 1570
-----------	----------	-----------



CATEGORY	A	B	C	D
S-ILS 34	1770/24 200 (200-1/2)			
S-LOC 34	2040/24	470 (500-1/2)	2040/50	470 (500-1)
C CIRCLING	2120-1	484 (500-1)	2120-1 1/2 484 (500-1 1/2)	2200-2 564 (600-2)
XIKCY FIX MINIMUMS				
S-LOC 34	1940/24	370 (400-1/2)	1940/35	370 (400-3/4)
C CIRCLING	2120-1	484 (500-1)	2120-1 1/2 484 (500-1 1/2)	2200-2 564 (600-2)

NE-2, 22 JUN 2017 to 20 JUL 2017

NE-2, 22 JUN 2017 to 20 JUL 2017