


| | | | |
|--|------------------------|-----------------------------|---------------------------------------|
| WAAS CH 70304 W32A | APP CRS 320° | Rwy Idg TDZE Apt Elev | 9618 25 26 |
|--|------------------------|-----------------------------|---------------------------------------|

RNAV (GPS) RWY 32

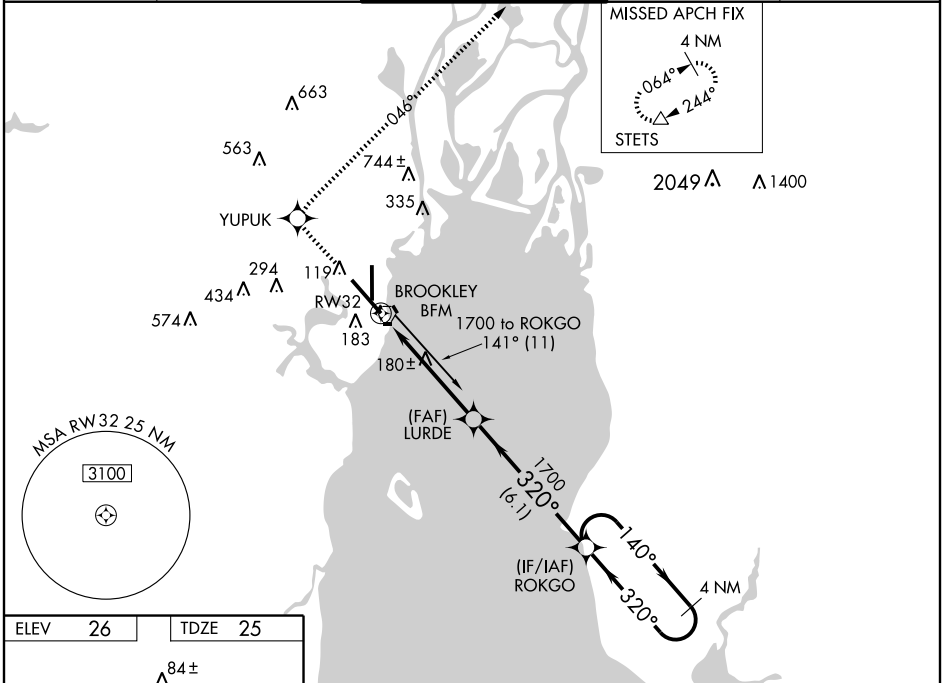
MOBILE DOWNTOWN (BFM)

▼ For uncompensated Baro-VNAV systems, LNAV/VNAV NA below -15°C (5°F) or above 48°C (118°F). DME/DME RNP-0.3 NA. When local altimeter setting not received, use Mobile Rgnl altimeter setting and increase all DA 50 feet and all MDA 60 feet, increase LNAV Cat C visibility to RVR 5000, Cat D to RVR 6000. Baro-VNAV and VDP NA when using Mobile Rgnl altimeter setting.

MALSR 

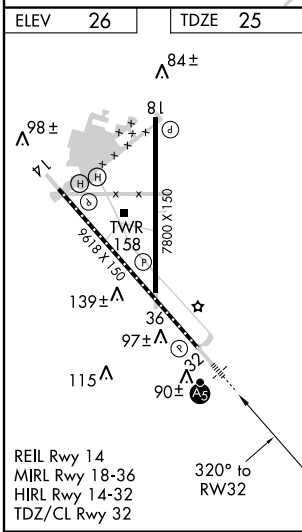
MISSED APPROACH: Climb to 2000 direct YUPOK and via track 046° to STETS and hold.


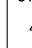
| | | | | |
|------------------------|--|---|-------------------------------|-------------------------|
| ATIS 135.575 | MOBILE APP CON * 118.5 269.3 | DOWNTOWN TOWER * 118.8 (CTAF) 0 251.1 | GND CON 121.7 239.3 | UNICOM 122.95 |
|------------------------|--|---|-------------------------------|-------------------------|



SE-4, 31 MAY 2012 to 28 JUN 2012

SE-4, 31 MAY 2012 to 28 JUN 2012



2000 YUPOK  STETS  VGSI and RNAV glidepath not coincident (VGSI Angle 3.00/TCH 71).

* LNAV only

* 1.2 NM to RW32

LURDE ROKGO Holding Pattern

1700 320° 140° 1700

1700 GS 3.00° TCH 55

1.2 NM 3.8 NM 6.1 NM

| CATEGORY | A | B | C | D |
|--------------|--------|-------------|------------------------|-----------------------|
| LPV DA | 225/24 | | 200 (200-½) | |
| LNAV/VNAV DA | 368/40 | | 343 (400-¾) | |
| LNAV MDA | 480/24 | 455 (500-½) | 480/40 455 (500-¾) | 480/50 455 (500-1) |
| CIRCLING | 520-1 | 494 (500-1) | 520-1½ 494 (500-1½) | 580-2 554 (600-2) |